



ALIVE

ZOOLOGICAL SOCIETY
OF MILWAUKEE COUNTY

FOUNDED 1906 / Fall 1986

We've flipped over dolphins

By Rich Sajdak
Aquarium/Reptile Curator and
Kerry J. Bublitz
Public Relations Coordinator

Milwaukee, WI — The Milwaukee County Zoo staff wasn't jumping for joy on Friday, June 13, 1986 — and it didn't have anything to do with it being Friday the 13th. It was the third time the dolphin arrival had been delayed.

Little did the staff know it was only the beginning.

The Zoo has been planning since 1985 for an educational Atlantic bottle-nose dolphin and sea lion program which was scheduled to open June 19 in a new dolphin complex. The program, called Surfing Safari, was an entertaining half hour show about two dolphins, Jimbo and Jill, and a sea lion, Mota.

The new theater and pool were complete, landscaping finished and staff poised for the arrival of these beautiful mammals. On June 13, the dolphins' arrival had already been delayed three times. The wait was on. The premiere was scheduled for June 19 and the dolphins needed a few days at minimum to acclimate to their new home.

ZooVet, the dolphin owners, didn't have enough available staff in Duck Key, Florida, where the dolphins resided, to successfully capture the mammals for transport. Action was necessary. Zoo Director, Dr. Gilbert K. Boese, decided to send Zoo staff to assist.

A Milwaukee County Zoo team of animal people was put together to capture those elusive dolphins.

Around 5:30 a.m. June 16, Dr. Bruce Beehler, Milwaukee County Zoo Assistant Director, Dr. Andrea Lenhard, Milwaukee

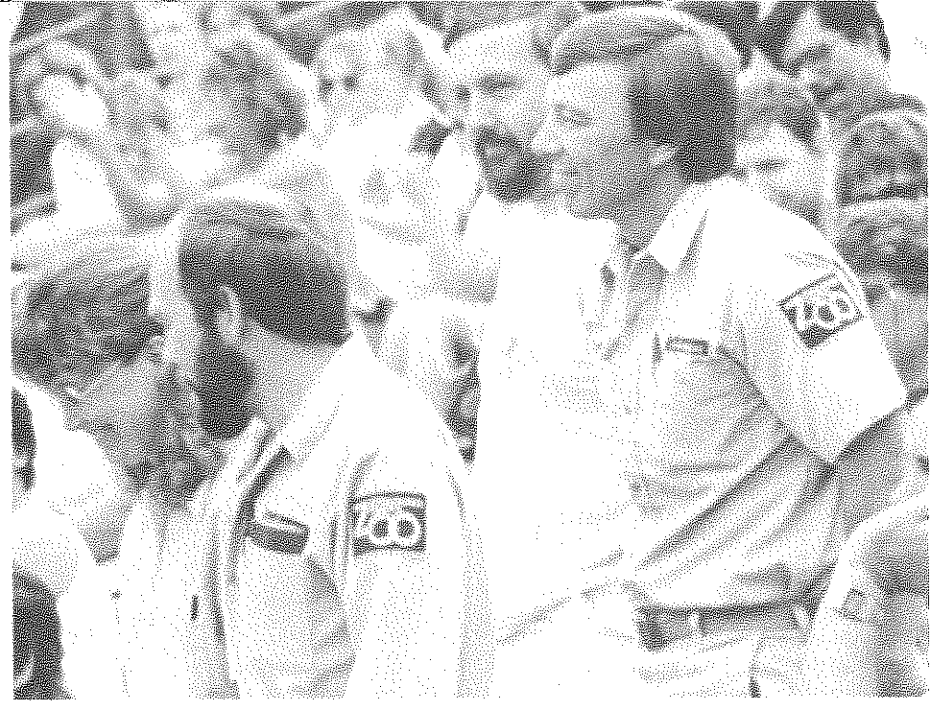
County Zoo Staff Veterinarian, Rich Sajdak, Aquarium/Reptile Curator, Ellen Saksefski, Area Supervisor, Jack Uphill and Dave Sorenson, Zookeepers, met at the Zoo yawning and nervous. As certified SCUBA divers and experienced animal personnel, they had been chosen to help bring two Atlantic bottle-nose dolphins to the Zoo.

After the flight to Miami, Florida, and a three hour drive to Hawk's Cay Resort on Duck Key, they met Jimbo and Jill, the much talked about dolphins.

In addition to Jimbo and Jill, there were six other dolphins and two sea lions in the holding facility. The dolphins were kept in a lagoon within five net enclosures. Four of the pens were each about half the size of a tennis court, and 18 to 20 feet deep. The fifth pen was as large as the four combined and located in deeper water.

The team made a quick change into swimming gear while Kevin Walsh, of the ZooVet staff, gathered his crew. The idea was to use weighted nets to herd the dolphin into a corner of the pen, then grab the dolphin by the pectoral fins, the paired fins low on the body just behind the head, wrestle the dolphin into shallow water and onto a stretcher.

At 4 p.m., they began. At 7 p.m., they were still trying. Time after time, they worked the net up to a wall of the pen only to see Jimbo breach on the wrong side of the net. It wasn't an easy task to round up a 550 pound, nine foot long dolphin, while dodging stinging jellyfish and sharp coral rock. Working in water with nets made move-



The dolphin crew took a bow during the opening performance of Surfing Safari.

ments seem slow and clumsy. The crew decided to give it one more try in hopes of getting the dolphins to Miami for the scheduled flight to Milwaukee.

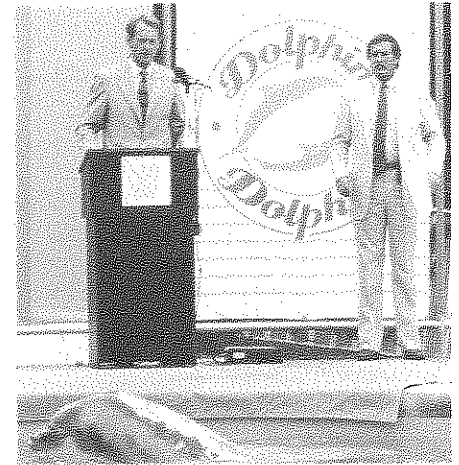
Jimbo was a wise dolphin. He has spent 20 of his 26 years in captivity and he knew more about what was going on than the crew did. But this time, his game didn't work.

Jimbo was worked into a corner in deep water. As he passed, someone managed at last to hang onto the flukes (or tail). Before he could shake loose, George (K. C.) Diesko, dolphin trainer, also got a hold. As they sank, everyone else converged. The scene resembled water polo with a nine foot long, 550 pound opponent, but soon he was wrestled into shallow water and up to the stretcher.

After wrestling him onto the stretcher, he was lifted onto a plywood platform covered with thick foam pads. The crew smeared most of his body with zinc oxide, a treatment designed to keep the dolphin's skin from drying out. The ointment cannot be used on the flukes, dorsal or pectoral fins. Dolphins use these fins as radiators to get rid of excess heat. If they were covered with ointment, the animal could overheat and die.

All 550 pounds of Jimbo was hauled back and forth in the sling to get him settled in for the trip, slipping his pectoral fins into specially cut holes in the sling for comfort. The sling was placed in a vinyl shipping container.

One down, one to go. Jill posed an extra challenge since she was sharing a pen with April, another dolphin. So the crew had to make sure they were grabbing the right dolphin. Finally, with darkness falling, Jill was grabbed.



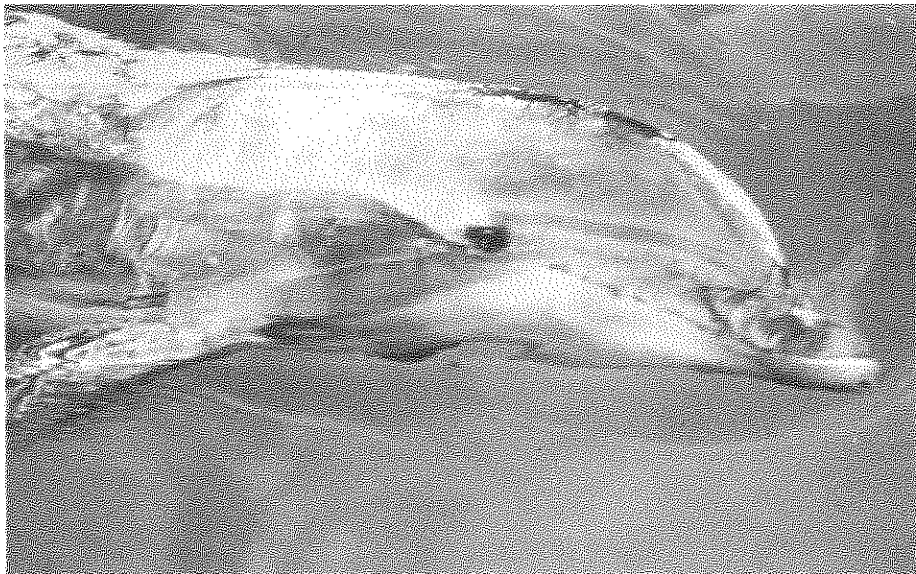
Allen W. Williams, Jr., Zoological Society President (left), and Dr. Gilbert K. Boese, Zoo Director, welcome guests to the Surfing Safari opening.

With both dolphins loaded, Beehler and Diesko headed for Miami and the flight to Milwaukee.

The rest of the dolphin crew breathed a sigh of relief as the truck pulled out. At 9:30 p.m., they sat down to dinner, their first meal since breakfast in Milwaukee, thinking the dolphins were well on their way to the Zoo. A phone call changed all that. Jill's sling had ripped and the truck would return to Duck Key to switch slings. It was Murphy's Law — everything that can go wrong, will go wrong.

At 5:30 a.m., 24 hours after leaving Milwaukee, the dolphin crew was on its way home. The dolphins arrived in Milwaukee after a charter flight from Tampa on Thursday morning, June 19 at about 12:45 a.m. — only 10 hours before their scheduled premiere.

continued on page 4



The zinc oxide, applied to keep Jimbo's skin moist during transport, washed off after a few days in the water.

Zoological Society receives grants

By Bev Greenberg
Development Director

The Zoological Society of Milwaukee County received three grants recently which will aid the Zoo in its \$25 million master improvements plan and conservation goals.

The Institute of Museum Services awarded a \$75,000 grant to be used to design and implement interpretive graphics and educational programming for the Dairy Complex. The Zoological Society of Milwaukee County was one of only 107 recipients to receive the top award.

The Institute of Museum Services (IMS), an independent agency with the National Federation of the Arts & Humanities, was established in 1976 to assist museums in their educational role and in doing so preserve the nation's cultural, historic and scientific heritage.

The Zoological Society was also awarded an \$18,308 IMS Conservation Grant. The monies will be used for the study of an unprotected and threatened species of snakes in the genus *Alsophis*. Rich Sajdak, Aquarium/Reptile Curator, and Bob Henderson, Milwaukee Public Museum, will work together in implementing a plan to continue and expand a pilot project on captive husbandry and breeding, and

begin cooperative conservation efforts to protect this type of snake.

In June, the Milwaukee Foundation through the Walter and Olive Stiemke Fund, awarded the Society a \$75,000 grant. The funding was granted for the capital improvements campaign, "Our New, New Zoo," currently underway at the Zoo.

"Our New, New Zoo" is a \$25 million expansion and renovation plan. The Society has pledged to raise \$12.5 million from the private sector with matching funds provided by Milwaukee County.

Address change

If you have moved, or are moving soon, please send your new address to the Zoological Society Membership Department, 10001 West Bluemound Road, Milwaukee, Wisconsin 53226, or phone 258-2333. Our publications and notices are mailed bulk rate and will not be forwarded by the Post Office.

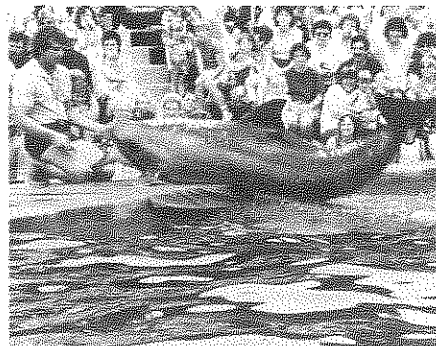
Dolphins

continued from page 3

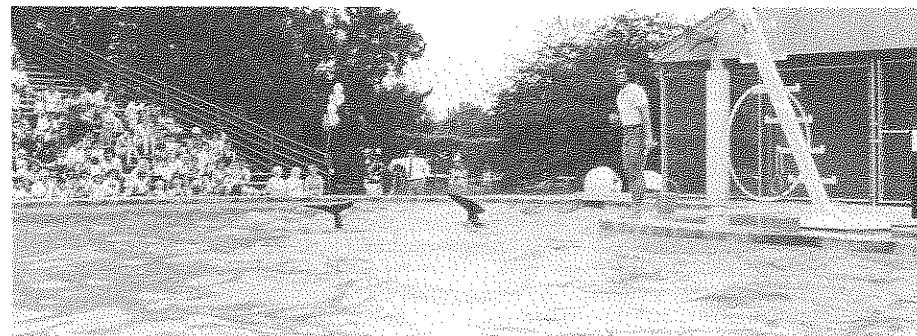
Jimbo and Jill with their sidekick Mota have become a summer favorite of Zoo visitors. More than 250,000 people will have seen the dolphin show at summer's end.

These aquatic mammals are a beautiful addition to the Zoo's summer program. Zoo visitors have the opportunity to learn more about dolphins and their fascinating behaviors.

In October, the dolphins will return to their winter home in Florida. The dolphin crew, now experienced, may be called on again to help prepare Jimbo and Jill for their journey south. 🐬



Jill receives a sweet fish treat from dolphin trainer, K.C.



No, it's not the end. It's the tail end.

THE ZOOLOGICAL SOCIETY OF MILWAUKEE COUNTY Thanks Its Following Loyal — Corporate & Patron Supporters

10,000 Platinum Corporate

Platypus Members

American Express
5,000 Gold Corporate Platypus Members
Evan and Marion Helfaer Foundation
MGIC Investment Corp.
Marquette Electronics Foundation
Northwestern Mutual Life Insurance Company
2,500 Silver Corporate Platypus Members
Arlene's Economy Sign
Central Control Alarm Corp.
Ferro Marketing Inc.
Georgia-Pacific Corp.
Chr. Hansen's Laboratory
Hyatt Regency-Milwaukee
Johnson Controls Foundation
D. Kurman Company
Marshall & Ilsley Bank
The Milwaukee Journal/Milwaukee Sentinel
Peck Meat Packing Company
Rocky Rococo, Inc.
Ruby Chevrolet/Ruby Oldsmobile
A.O. Smith Foundation
Sundance Photo, Inc.
Time Insurance Company
WITI-TV 6
WOKY/WMIL
Wiscol, Inc.

1,000 Corporate Platypus

Aladdin Label, Inc.
Allen-Bradley
Allis-Chalmers Corporation
Badger Meter Foundation
Badger Truck Center
Battery Shop, Inc.
Bayshore Clinical Laboratories
Benlo Chemicals, Inc.
Blue Cross & Blue Shield
The Lynde & Harry Bradley Foundation, Inc.
Braeger Chevrolet, Inc.
Capitol Stampings Corp.
Consolidated Papers Foundation, Inc.
The Gretchen & Andrew Dawes Endowment
Delzer Lithograph Company
Eastman-Kodak Company
Eaton Corporation
Edgewood Bank
Electri-Wire Corporation
Essentials Chemicals Corp.
Falk Corporation
Findley Adhesives, Inc.
First Bank Foundation, Inc.
First Wisconsin Foundation, Inc.
The Fox Company, Inc. Lithographers
Frankenberry, Laughlin & Constable
Fredman Bag Company
Grunau Company, Inc.
Hastings-Doyle & Co., Inc.
G. Heileman Brewing Company, Inc.
Heinemann's Restaurants
Holzman Furs
IBM Corporation
In-Place Machining Co.
Intrepid Corp.
Jacobus/Heritage Foundation, Inc.
Jefferson Smurfit Corp.
Johnson Brass & Machine Foundry
Kahler-Slater-Torphy-Engberg
Klein Metal Finishing, Inc.
Klement Sausage
Charles A. Krause Foundation
Otto L. Kuehn Co.
La Joy Restaurant Corp.
Lakeside Oil Company
Little Caesars Pizza
The Marcus Corporation
Marine Bank, N.A.
Marketing Group Incorporated
Mechanical Industries
Megal Development Corporation
Miller Brewing Company
Miller Compressing Company
The Milwaukee Brush Mfg. Co.
Milwaukee Electric Tool Corp.
Milwaukee Northside Warehouse, Inc.
Milwaukee Valve Company Inc.
Moebius Printing Company
Monarch Corporation
Mueller Food Service
National Business Furniture
William W. O'Brien, Inc.
Olsten Temporary Services
Orion Corporation
PH Orth Co.
Pabst Brewing Company
Pepsi-Cola Bottling Company
The Perlick Company, Inc.
Peterbilt of Wisconsin, Inc.
Pillar Corporation
Quad/Graphics, Inc.
Reinhart, Boerner, Van Deuren,
Norris & Rieselbach S.C.

Reliable Knitting Works
Remus Catering Service
Rexnord Foundation
Robertson-Ryan & Associates
M. M. Schranz Roofing, Inc.
Silverbird Lanes/Silverbowl Corp.
Stackner Family Foundation
Sta-Rite Industries, Inc.
Stein Garden Centers, Inc.
Sterling, Inc.
Super Sky Products, Inc.
Tamarack Petroleum Co., Inc.
Taylor Electric
Tombstone Pizza Corporation
Trade Press Publishing Company
Uihlein Electric Co., Inc.
Universal Foods Corporation
Usinger Famous Sausage
Valuation Research Corporation
Kurt Van Engel Commission Co., Inc.
The Video Station
Vilter Foundation, Inc.
WJSN-TV
R&B Wagner, Inc.
Whyte Hirschboeck S.C.
Wisconsin Bell, Inc.
Wisconsin Electric Power Company
Wisconsin Gas Company
Wisconsin Packing Company
Wisconsin Public Service Corp.
Arthur Young
The Ziegler Foundation
2,500 Silver Patron Platypus Members
Leon and Bonnie Joseph
Eugene G. Martin
John Taylor
Lorna M. Venderbush
Jack and Margo Winter
1,000 Patron
Waller & Rosalie Carson, Jr.
Rheinhold & Beverly Hugo
Jacquelyn Larson
Dorothy Ross Pain
Willis G. Sullivan
Bernard C. Ziegler II
500 Patron
Howard E. Aicorn
Thekla P. Brumder
Christin Cleaver
Robert K. Cope
Mrs. Colet Coughlin
Fred Cramer
Daniel Daley
Ross H. Dean
Glenn Dempsey
Larry Ehlers
David S. Epstein
Thomas B. Fifield
Dr. Robert J. Flemma
James D. Friedman
Carl O. Friend
G. L. Gosewehr
Martin J. Greenberg
John Hazelwood
Klaus Heuppe
Madeline J. Howard
R. Robert Howard
Dr. Leander R. Jennings
Alice Bertschy Kadish
Dr. Michael C. Kubly
Eugene F. & Gwendolyn Lavin
Donald J. & Ruth L. Lewis
Mrs. David K. Lindsay
Douglas M. MacNeil
Irwin Maier
Jane E. Martin
Quinn W. Martin
D. F. McKeithan, Jr.
Terence J. Mulvihill
Joan M. Pick
Sidney Plotkin
Podell, Miller & Associates, Inc.
Bill & Mary Ann Pollock
Jack Recht
A. D. Robertson
Barry S. Sattell
Joseph F. Schoendorf, Jr.
Gertrude Elser Schroeder
Gene E. Soldatos
Martin F. & Barbara Stein
Miles Theurich
John E. Thomas
Thomas & Priscilla Tuschen
Nancie Dauer Uihlein
Mrs. Robert Uihlein
Allen W. Williams, Jr.
You have enabled us to continue the excellence established at the Milwaukee County Zoo in the areas of education, recreation, exhibition and conservation. On behalf of Wisconsin's #1 Tourist Attraction — THANK YOU!

TRAVEL

Join the India adventure

India is a land filled with unusual flora and fauna, varied habitats and magnificent wildlife. A 22-day excursion into this fascinating subcontinent will allow you to experience every aspect of its beauty.

This Indian wildlife adventure will include visits to Kazaringa Wildlife Reserve, the home of more than 1,000 Indian Rhinoceros, Agra, the city of Taj Mahal and Jaipur, the Pink City.

The Zoological Society of Milwaukee County

Directors:

John B. Burns
William M. Chester, Jr.
Patricia B. Dalton
Stephen Dearholt
Sue Dragisic
Robert Elliott
Dennis W. Frankenberry
John A. Hazelwood
Robin Higgins
Dr. Leander R. Jennings
Robert A. Kahlor
James H. Kuehn
Thomas C. Lathrop
D. F. McKeithan, Jr.
Sandi Moomey
Bernard Peck
Anthony J. Petullo
Jack Recht
Jay H. Robertson
Michael Schmitz
Gene E. Soldatos
Richard A. Steinman
John W. Taylor
Mrs. Robert A. Uihlein
Joan Urdan
Allen W. Williams, Jr.
Carol Wythes
Bernard Ziegler III

Honorary Directors:

Thomas B. Fifield
Robert T. Foote
Richard A. Gallun
Richard D. Gebhardt
Edward O. Gerhardy
Edward A. Grede
James F. Kieckhefer
George D. La Budde
William A. Lohse
Ann McNeer
Howard E. Moebius
Bill G. Moomey
Thomas S. O'Byrne
Philip W. Orth, Jr.
Frederick L. Ott
Dorothy Pain
William R. Pollock, Jr.
Kurt W. Remus, Jr.
A. D. Robertson
George Speidel
Willis G. Sullivan
James A. Taylor
William C. Wright

This adventure into the wild of India departs from Milwaukee November 2, 1987. The cost of the trip is \$3,495 (all inclusive). For additional information contact Pat Bagnall at the Zoological Society, 258-2333.

Experience Hawaii

You will see the most remote areas of her scenic beauty and her busiest tourist areas, you will see her as no one else has. You will know that she is indeed nature's Island Paradise, you will know that she is Hawaii.

This 14-day excursion will take you to the "Big Island" of Hawaii, Maui, the home of the Haleakala Volcano and the "Garden Isle" of Kauai.

Observe volcanic activity, lush rain forests, black sandy beaches and coral reefs. Explore the slopes of the Haleakala Volcano or spend some time whale watching or snorkeling. Venture into sea caves or into the ruins of an ancient fishing village. The possibilities are endless.

Share Hawaii's traditions, breathtaking scenery and charming people. It is an experience of a lifetime for only \$2,798.

Trip departs from Milwaukee, January 21, 1987. For additional information contact the Zoological Society, 258-2333.

East Africa

If it's magnificent scenery, incredible wildlife and adventure you are yearning for — the answer is East Africa. An 18-day adventure to Tanzania and Rwanda will fulfill all your needs.

Bordered by Africa's three largest lakes and crowned by the continent's highest mountain, Tanzania is a country rich in natural history. A progressive conservation program has resulted in a park system that is home to incredible concentrations of wildlife.

Rwanda, a mountainous, evergreen country, boasts outstanding National Parks. Akagera and Volcanoes National Parks have won acclaim throughout the world.

Diverse habitats, rare wildlife, lush grass and deep valleys make Akagera National Park pleasing to the nature and animal lover. Volcanoes National Park, home of the mountain gorilla, is an adventure in itself.

Departure date is February 15, 1987. For additional information contact Pat Bagnall at the Zoological Society, 258-2333.

You're Invited

The Board of Directors
of the Zoological Society
and Dr. Gilbert K. Boese, Zoo Director,
cordially invite
every Zoological Society member
to a special evening at the
Brookfield Square Mall,
Saturday, October 11, at 7:30 p.m.

The evening celebrates the beginning of "Our New, New Zoo." Brookfield Square mall merchants have generously agreed to promote the exciting \$25 million Zoo improvements in their mall, October 5 through October 15. The event is called Wild About Savings!

This special evening is designed as a fund-raiser for "Our New, New Zoo" and the Zoo's 4,000 exotic animals.

Arlene Wilson models will host a fashion show assisted by your own Milwaukee County Zoo and Zoological Society celebrities. They will model adorable dairy attire, smashing safari outfits and elegant "animal" evening wear.

Join other Zoo enthusiasts for wine and cheese and a fashion show plus an exclusive showing of "Our New, New Zoo." The program will feature highlights of the upcoming new additions at the Zoo such as the Caribbean Cove, the Valley of the Apes and the Dairy Complex.

Your attendance will make the evening complete. Brookfield Square merchants are Wild About Savings and Wild About the Zoo and you.

Call the Zoological Society, 258-2333, for more information.

I am "Wild About Savings." Enclosed please find my check in the amount of _____ (\$10 per person).

Name _____

Address _____

City _____ State _____ Zip _____

Phone _____

Mail with check to: Zoological Society of Milwaukee County
10001 W. Bluemound Rd.
Milwaukee, WI 53226

Tickets will be available at the door the night of the event.

Thank you for your support.

Please use the East Mall Entrance

Membership offers benefits

Membership in the Zoological Society of Milwaukee County provides many benefits. Take a look at what you receive by joining the wildest club in town!

- **FREE ADMISSION** to the Zoo for your family (husband, wife and their minor children) or individual (person named on Membership Card only). Parking is additional.
- **10% DISCOUNT** at all of our Zoo gift shops when you present your Membership Card.
- **"NIGHT IN JUNE"** picnic for our members and their families.
- **ANNUAL PROGRAM** (Beauty and the Feast) for our members and their families with famous guest speakers like Jacques Cousteau, Joan Embry and Roger Caras.
- **SAFARI INVITATION**—join an international safari organized exclusively for members and led by Milwaukee County Zoo Director, Dr. Gilbert Boese.
- **SPECIAL MEMBERS' PREVIEWS** of new exhibits and rare animal acquisitions.
- **ALIVE**—a subscription to our fun and educational quarterly publication.

Following is a list of zoos and aquariums that will honor your Zoological Society Membership Card for free admission.

ALABAMA
Birmingham Zoo
Montgomery Zoo

ARIZONA
Reid Park Zoo, Tucson

ARKANSAS
Little Rock Zoo

CALIFORNIA
Knowland Park Zoo, Oakland
Los Angeles Zoo
San Francisco Zoo
Santa Barbara Zoo
Santa Ana Zoo
Sequoia Park Zoo Society, Eureka
Roeding Park Zoo, Fresno

CONNECTICUT
Beardsley Zoo, Bridgeport

FLORIDA
Jacksonville Zoo
Dreher Zoo, West Palm Beach
Markham Park Zoo, Ft. Lauderdale
Miami Metrozoo, Miami
Central Florida Zoo, Lake Monroe

GEORGIA
Atlanta Zoo

ILLINOIS
Glen Oak Zoo, Peoria
John G. Shedd Aquarium, Chicago
Miller Park Zoo, Bloomington
Henson Robinson Zoo, Springfield

INDIANA
Fort Wayne Children's Zoo
Indianapolis Zoo
Mesker Park Zoo, Evansville
Potawatomi Zoo, South Bend

KANSAS
Sedgwick County Zoo, Wichita
Topeka Zoo
Sunset Zoological Park, Manhattan
Lee Richardson Zoo, Garden City
Brit Spaugh Zoo, Great Bend

KENTUCKY
Louisville Zoo

LOUISIANA
Audubon Park & Zoo, New Orleans
Greater Baton Rouge Zoo, Baker
Louisiana Purchase Gardens & Zoo, Monroe

MARYLAND
Baltimore Zoo

MICHIGAN
Binder Park Zoo, Battle Creek
John Ball Zoo, Grand Rapids
Detroit Zoo, Detroit

MINNESOTA
Minnesota Zoological Garden, Apple Valley
Duluth Zoological Garden

MISSISSIPPI
Jackson Zoo

MISSOURI
Dickerson Park Zoo, Springfield
Kansas City Zoo

NEBRASKA
Folsom Children's Zoo, Lincoln
Henry Doorly Zoo, Omaha

NEW JERSEY
Turtle Back Zoo, West Orange
Cohanzick Zoo, Bridgetown

NEW MEXICO
Rio Grande Zoo, Albuquerque

NEW YORK
Buffalo Zoo
Burnet Park Zoo, Liverpool
Ross Park Zoo, Binghamton
Seneca Park Zoo, Rochester
Staten Island Zoo
Utica Zoo

NORTH CAROLINA
North Carolina Zoological Park, Asheboro

NORTH DAKOTA
Dakota Zoo, Bismarck

OHIO
Akron Zoo
Cleveland Zoo
Columbus Zoo
Toledo Zoo

OKLAHOMA
Oklahoma City Zoo
Tulsa Zoo

PENNSYLVANIA
Erie Zoo
Gettysburg Game Park, Fairfield
Philadelphia Zoo
Pittsburgh Zoo
ZOOAMERICA at Hersheypark, Hershey

SOUTH CAROLINA
Greenville Zoo
Riverbanks Zoo, Columbia

TENNESSEE
Knoxville Zoological Park
Memphis Zoo & Aquarium

TEXAS
Abilene Zoo
Central Texas Zoo, Waco
El Paso Zoo
San Antonio Zoo & Aquarium
Texas Zoo, Victoria
Dallas Zoo

UTAH
Hogle Zoo, Salt Lake City

WISCONSIN
Jo-Don Farms, Franksville
Milwaukee County Zoo, Milwaukee

CANADA
Calgary Zoo, St. George's Island
FREE MONORAIL RIDE ONLY
Kings Dominion, Diswell, Virginia
Kings Island, Kings Island, Ohio

Beautiful Creatures

MAKE Great Gifts

Zoological Society Gift Membership
The holiday season is a time of gift giving. Remember friends and relatives with a gift of love — a membership in the Zoological Society of Milwaukee County.

Give a gift of love and support the 4,000 exotic animals who make their home at the Milwaukee County Zoo.

Happy Holidays.

Ask for a gift membership application by calling 258-2333 or charge on your VISA/MasterCard/American Express.



ZOO CALENDAR SPECIAL

This will be the only time the 1986-87 Zoo Calendar will be available for the 1986 holiday season through *Alive*.

Little Caesar's Pizza has sponsored this beautiful 16-month, full color calendar.

THE CALENDAR FEATURES:

- 1986 Zoo Photo Contest Winner and Entries
- Baby Indian Elephant on Cover
- Dates of all Zoo Special Events
- \$50 Worth of Little Caesar's Coupons

The Zoo Calendar is the perfect gift for yourself, friends, relatives or employees. Give a gift that will last all year.

Zoological Society members may purchase calendars at \$3.00. The 1986-87 Zoo Calendar sells at \$4.00 to the general public.

SUPPORT THE ZOO

SPECIAL HOLIDAY OFFER WITH THIS COUPON

Buy the calendar as a Zoological Society Member for \$3.00 (2 through 10 calendars at \$2.75 each; 11-50, \$2.50 each; 50-100, \$2.00 each). Postage included.

Enclosed is \$3.00 for one Zoo Calendar _____

Enclosed is \$_____ for _____ Zoo Calendars.

Name _____

Address _____

City _____ State _____ Zip _____

Mail with check to:

ZOOLOGICAL SOCIETY OF MILWAUKEE COUNTY
10001 W. Bluemound Road, Milwaukee, WI 53226

Animal births highlight season

Early and mid-summer brought numerous changes to the animal collection. This spring a female caribou and two male impala were born. On May 18, Katie and Gobi, two bactrian camels, became the proud parents of a baby girl, Jewel. A new bongo, Hugh, was born in July.

Breeding loans with other Zoos also proved productive. In May, a Mayalan tapir was born at the Memphis Zoo, Tennessee, and in June a South American tapir was born at the Brookfield Zoo, Illinois. Both mothers are on breeding loan.


The Small Mammal building received a male black-footed cat from the Cincinnati Zoo. Other additions include two mouse lemurs, three brush-tailed Bettong or rat kangaroos and two grey-legged douroucouli (owl monkeys).

Two yellow-footed tortoises found a new home in the Aquarium/Reptile building in

July. More notable additions include a black widow spider, six flapneck chameleons, three horned adders, three giant grass lizards, four Knysa dwarf chameleons and a Brazilian rainbow boa.

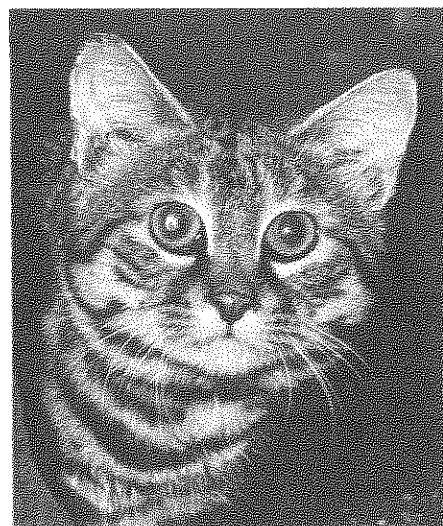
At the Aviary, two cactus wrens, four house finches and the hatching of a kookaburra took place.

Male and female black-handed monkeys are new to the Primate building. One is on loan from Van Saun Park Zoo, New Jersey, and the other from the Dallas Zoo, Texas. These primates replaced the woolly monkey exhibit.

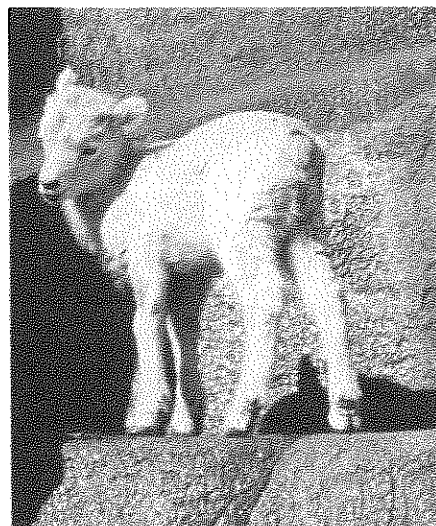
Other new arrivals at the Zoo include three female lion cubs: Ethel Louise, Sasha and Samantha. These young females are currently being introduced to their future pride members, Amon Ra and Ramesis, two males. 



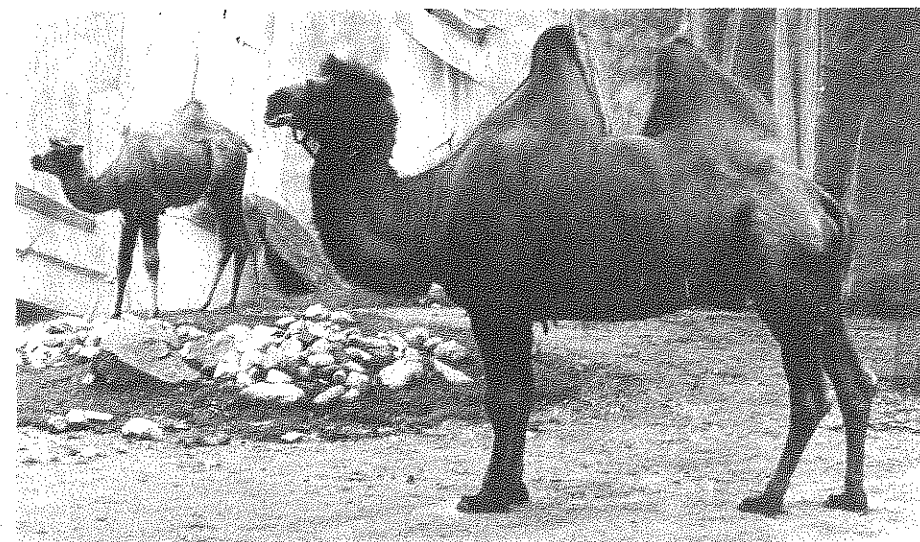
Ethel Louise is one of three new lion cubs.



The rare black-footed cat takes a peak at curious Zoo visitors.



This dall sheep acts like such a kid.



Katie, a bactrian camel, has been a good mother to her first offspring, Jewel.

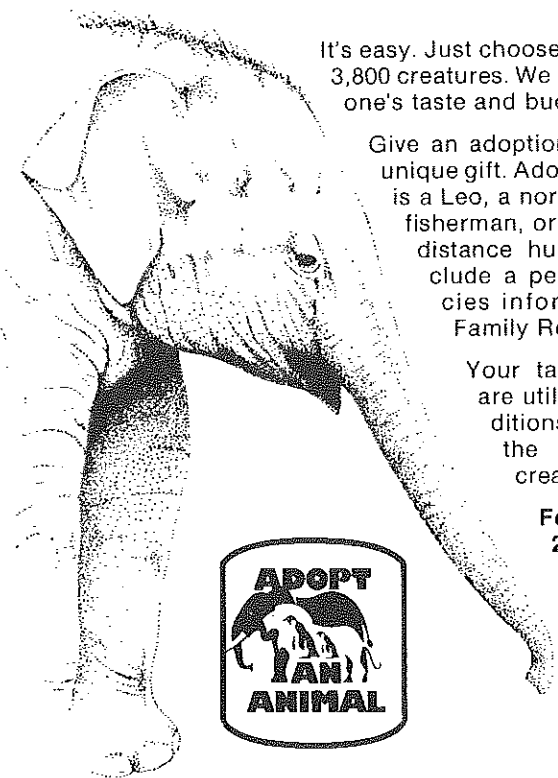


It's a toss up over who enjoys the new underwater viewing windows more — the polar bears or the visitors.



A kookaburra chick stays under the close supervision of its mother. Photos by Rich Bartz.

SHARE THE CARE



It's easy. Just choose from our collection of over 3,800 creatures. We have something to fit everyone's taste and budget.

Give an adoption of an exotic animal as a unique gift. Adopt a lion for your friend who is a Leo, a northern pike for your favorite fisherman, or a bear to represent a long-distance hug. Adoption packages include a personalized certificate, species information, invitation to the Family Reunion picnic and more.

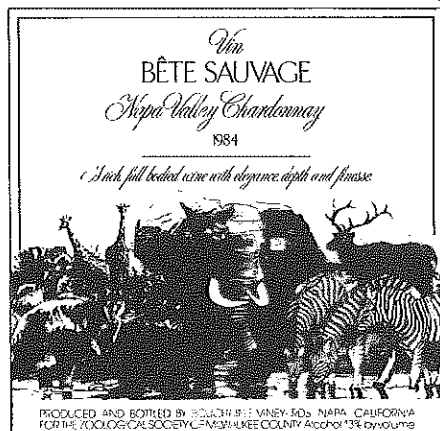
Your tax-deductible contributions are utilized in renovations and additions of habitats so important to the welfare of our resident creatures.

For more information, call 258-2223.

Adoptions and visitations are year-round.

Special Zoo wine to please palate

The Zoological Society has a special offer — Ronald Reagan's favorite wine. The wine is a rich Chateau Bouchaine Napa Valley Chardonnay, dry yet elegant with a hint of lemon. While it is perfectly attractive now, the wine will reward patience as it will peak in three years. Not only will you be proud when serving this delectable wine, but you will help to support one of the world's top Zoological Gardens. The wine is \$100 a case. Each bottle is graced with a label artistically designed by an Honorary Zoological Society Director, Bill Moomey of Moomey/Ward Creative, Inc. Please call Pat Bagnall at the Society office with your request, 258-2333, or mail the attached order blank.



Name _____

Address _____

City _____ State _____ Zip Code _____

Telephone _____

_____ Case(s) of Wine \$ _____ Total

EDUCATION

Family fun planned

When winter winds turn Wisconsin into an arctic landscape, we adapt in many elaborate ways. Animals must also adapt. On December 29 and 30, the whole family can explore some of the many ways animals survive the winter in "Arctic Adventures." For more information contact the Education Department, 771-3040, after December 1, 1986.

Fall Programs

The Education Department is happy to announce the fall school/youth group program listing. Programs range from walking tours to "Zooing It," a guided tour utilizing the zoomobile.

Programs are available for preschool through high school classes and youth groups. Check the listing below, pick your programs, and call early for reservations. Dial 771-3040, extension 155, to get your program questions answered, and to make your reservations. Programs fill quickly, so call early.

Programs

Surfing Safari, Sept. 2-Oct. 15

(weather permitting)

Zooing It, Sept. 2-Oct. 31 (weather permitting)

Guided Tours, Sept. 22-Dec. 21

You Are What You Wear, Oct. 20-Nov. 7

Turkey Days, Nov. 17-Nov. 21

Holiday Trek, Dec. 1-Dec. 19

Newspaper Days, Dec. 3, 4 and 5

October—Preschool Workshop (4 & 5 year olds). **Bugs In The Zoo**—The children will participate in activities to learn about insects. The children will explore the woods and shoreline of Lake Evinrude to find out just who is buggin' the Zoo.

November—Preschool Workshop (4 & 5 year olds). **Animal Tracks and Facts**—The children will be comparing the human footprint to various animal prints. They will discover how the different kinds of feet help the animals survive in their environment.

November—Primary Animals Workshop (1st, 2nd & 3rd Grades). Call to register. **Animal Homes**—An animal's home is called its habitat. Learn about the habitats of our Zoo animals and find out how the Zoo helps its animals feel at home.

December—Preschool Workshop (4 & 5 year olds). **Rudolph's Adventures**—We will take a close up look at Santa's reindeer friends and learn how they are cared for at the Zoo. We will also find out about Rudolph's Zoo adventures.

Registrations began August 1. Call the Education Department, 771-3040, about workshop availability. Winter/Spring workshop listings will be available in December.

Private events reach new heights

The Milwaukee County Zoo is growing by leaps and bounds, but exhibits and the animal collection aren't the only things growing. Private events at the Zoo have taken hold and are catching on quickly.

In 1983, there were rarely private events at the Zoo. Six months into 1986, the Zoo has already hosted 200 private events and anticipates many more by 1987. The Zoo's general popularity combined with a progressive sales department has resulted in a private events business that has increased five fold in three years and provides the unusual opportunity of dining with 4,000 exotic animals.

The Zoo is a fantastic place to have a get-together. In an effort to spread the word, an informational packet, "Take a Closer Look," was developed and is currently available to those interested in booking private events at the Zoo.

Although summer is the most popular season for private parties, events can be booked year round. The Flamingo Cafe Restaurant can accommodate larger

groups, while various animal buildings lend themselves well to groups of 100 or less.

In the summer, groups interested in private events can choose from a number of locations, including two picnic areas equipped with electricity, water and bathroom facilities. Availability at the picnic areas goes quickly. Those interested in booking events for summer 1987 should contact the group sales department in January.

In August, 1986, the Zoo hosted the largest private event in its history. Over 11,000 people attended the Red Carpet Bowling Lanes' "Zoooper Party." A private event that rivals regular daily Zoo attendance is proof positive that private events are indeed catching on.

It isn't difficult to understand why an increasing amount of people appreciate the fact that they can enjoy an evening or an afternoon with their favorite people in a beautiful and unusual setting — the Milwaukee County Zoo.



Zoo Ball co-chairpersons were (left to right): Richard and Sue Steinman, Frank "Buzz" and Mary Beth Carr.

Zoo Ball raises funds and spirits

Milwaukee, WI — The 1986 edition of the Zoo Ball, June 28, raised \$150,000 for the renovation of the polar bear exhibit.

Zoo Ball III with the theme, A Polar Expedition, was an elegant evening for 726 partygoers. Everyone dressed in "penguin chic" or black and white.

Guests arrived at 6 p.m. and were escorted to the Zoomobile for an arctic adventure ride past the polar bear exhibit.

A tent, beautifully decorated with what appeared to be snow, showcased auction items. Silent bidding grew heated as the closing hour — 8 p.m. — drew near. High bidders picked up their items at the end of the evening.

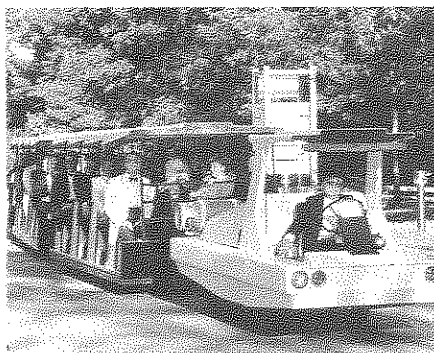
Following the auction, guests enjoyed dining and dancing inside a magnificent tent. The black and white arctic theme was carried through to the table linens and centerpieces.

A six-course dinner was a palate pleaser. The dessert was, of course, baked Alaska.

John McCullough, news anchor at Channel 4, emceed the voice auction of items such as a Caribbean cruise, a Super Bowl weekend, a ski trip in Colorado and a pearl and diamond bracelet.

Dancing to Dick Judson and the Swinging Brass lasted until 1 p.m.

Even the weather cooperated. A beautiful, balmy evening was the backdrop for an elegant evening of fundraising for the Zoo's polar bears.



Party-goers enjoyed an evening ride past the new polar bear exhibit — the beautiful animals which benefited from this annual fund-raiser (above).

The auction tent was an icy delight (right).

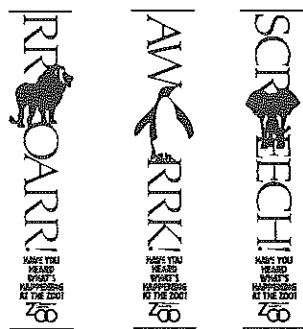
The Zoo Ball theme, A Polar Expedition, was carried through all the decorations including black and white table settings (below).



Zoo unveils public service campaign

Marketing Group Incorporated, a Milwaukee advertising and public relations agency, has teamed with the Milwaukee County Zoo to produce a fresh multi-media public service campaign.

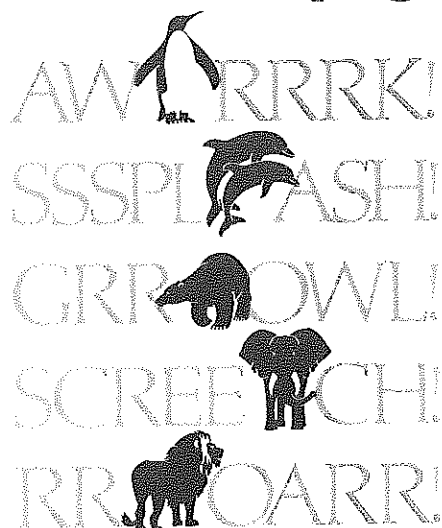
The public service campaign features a creative approach using animal sounds with the theme, "Have you heard what's happening at the Zoo?"



Billboards, bus placards, television, radio and newspaper materials were prepared and distributed, June 23. This is the first time the Zoo has developed a radio public service announcement.

Zoo officials believe the new campaign will increase attendance and public awareness of the Zoo.

Please call your local radio/television/newspaper if you hear or see a Zoo commercial. Let them know you appreciate their Zoo support by airing or printing the Zoo material gratis.



**HAVE YOU
HEARD
WHAT'S
HAPPENING
AT THE ZOO?**



ZOO PRIDE

Pride in "Pride"

As our organization gears down a bit for a less hectic time of the year, we have many accomplishments of which to be proud!

The Remains to Be Seen program expanded this year to offer additional opportunities for Zoo visitors to experience the touch of an animal hide, horn, or other animal artifact. The carts even featured foods Zoo animals should eat and should not eat during the A La Carte weekend.

Thanks to the Zoological Society membership and Zoo staff, Zoo Pride's annual bake sale was a tremendous success. The Zookeeper for a Day raffle raised over \$1,600 for the Zoo Hospital to be used for much needed equipment and supplies.

Teddy Bear Days attendance was greater than that of previous years and the events fun-filled in spite of the inclement weather. Our thanks to our sponsors throughout the year for these events; McCoy Contractors, TriCity National Banks, TriCity Advertising, Ltd., Holsum Foods, and Reine and Bev Hugo.

The Dungeon of Darkness is taking shape for Halloween and will prove to be the scariest haunted house ever! Pride volunteers' involvements and dedication truly make the difference. A special thanks to the Home Improvement Council of Milwaukee for their support of the haunted house.

In October, Zoo Pride will experience a "changing of the guard" with the election of a new president. At this time I would like to thank the Zoo Pride volunteers who unselfishly gave so many hours of volunteer support to the Zoo, Society and Zoo Pride. I feel honored to have served our organization as president and to have had the opportunity to have worked with so many dedicated individuals. My warmest wishes for Pride's continued success under the capable leadership of Chris Javins, incoming Zoo Pride president.

Robin Higgins

Be a V.I.P.

Zoo Pride will be offering Fall Behind-the-Scenes tours from September to April. The cost is \$7.50 per person with a \$20 minimum charge. This fee includes Zoo parking and admission. Please contact the Zoo Pride office to make reservations, 258-5667. No V.I.P.'s under 12 years of age, please!

Happy birthday!!!

Plan your child's next birthday party at the

Milwaukee County Zoo! Complete with birthday cake and all the trimmings plus activities in the Zoo, this is one day that your child will truly remember. Please contact the Zoo Pride office for additional information, 258-5667. Due to the popularity of this program, please plan ahead and book your party 8 to 12 weeks in advance.

Bring the Zoo to you

Bring the Milwaukee County Zoo to your next club meeting. The Zoo Pride speaker's bureau is an outreach program highlighting a day at the Zoo. Your guide on this safari through the Zoo is a Zoo Pride volunteer who is well versed in the comings and goings of the Zoo. For additional information please contact the Zoo Pride office, 258-5667.

Take Pride

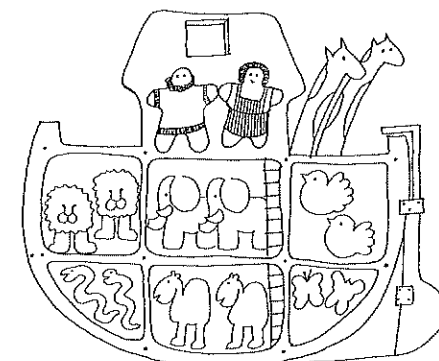
Zoo Pride, the volunteer auxiliary of the Zoological Society, offers exciting opportunities for interested individuals. Our volunteer activities are varied and take us to all parts of the Zoo. Please contact Zoo Pride for membership information, 258-5667.

Rain, rain go away

The recent monsoon that moved through Milwaukee Wednesday, August 6, didn't bypass the Zoo although attendance figures could have denied the 6.8 inches of rain.

There were 2,974 hardy souls who visited the Zoo that day.

Zoo officials didn't get too upset about the downpour, though. That was until a rumor started that the maintenance department was building an ark.



We Are Proud to Announce Our 1986 HOLIDAY EGG ORNAMENT

This year's limited edition ornament features that ship of the desert, the camel. Each ornament is fashioned from a snow white goose egg and then individually painted and numbered by Wisconsin artist Dawn Runge. Start your collection today, \$17.00 each.



ORDER FORM

Name _____ Money Order or Check*
Address _____ Charge my Visa MasterCard
City _____ Acct. # _____
State _____ Zip _____ Expiration Date _____
Phone _____ Signature _____

	Price Each	Quantity Ordered	Extension
HOLIDAY EGG ORNAMENTS	\$17		
*Please make checks or money orders payable to MILWAUKEE COUNTY ZOO Send to: MILWAUKEE COUNTY ZOO 10001 W. Bluemound Road Milwaukee, WI 53226 Allow 2 or 3 weeks for delivery		Add \$2 Shipping and Handling	\$2.00
		Sub-Total	
		5% Sales Tax	
		TOTAL DUE	

Zoo busy with special events

By Mary Beth Carr
Special Events Coordinator

Fall is a beautiful time to visit the Zoo and enjoy the changing colors without traveling a long distance. On October 4-5 and 11-12, besides taking in Autumn's ambience, you can shop for the season's produce at the Zoo's **Harvest Zoobilee**. The many produce stands at the Zoo's entrance offer a wide variety of items including vegetables, apples, preserves and straw flowers. A number of craft demonstrations also dot the Zoo landscape during this annual event. While you're here don't forget to visit the new Polar Bear Exhibit and also say goodbye to Jimbo, Jill and Mota before they travel south for the winter.

Calling all ghosts, goblins, witches and other creatures of the night . . . join us at the Zoo's **Halloween Spooktacular** on Saturday and Sunday, October 25 and 26. Fuji film and WOKY-WML traditional sponsors of Halloween At The Zoo are receiving additional support this year from Burger King. Undoubtedly the best Halloween event this side of Madison, you can ride the Spookmobile, board the Ghost Train at Transylvania Station, and tour the Dungeon of Darkness. A costume parade from the entrance to the dolphin stage will be followed by haunting entertainment and a prize drawing each day. For those who are brave enough to stay after dark, the Zoo will remain open until 8 p.m. After the veil of darkness, "Ghostly Tales" by firelight will be told in picnic areas and Jack O' Lanterns will greet you throughout the park. Anyone looking for a bite (of food, of course) can dine on Halloween fare in the Zoo restaurant while watching classic horror movies. This event is bound to leave you screechless!

It may seem early to start thinking about Christmas but it's not too early to plan to bring the family to **Lunch With Santa**. This popular holiday program begins at

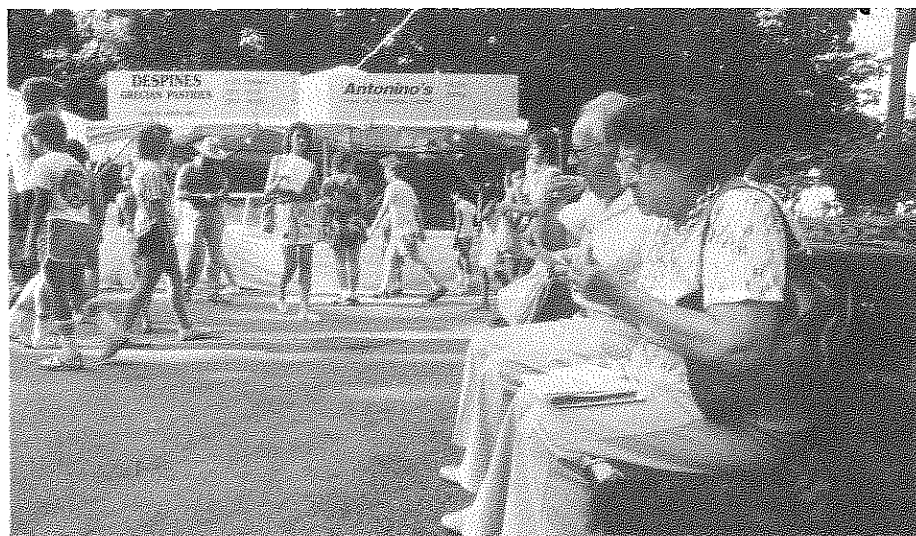
noon on December 6, 7, 13 and 14. Admission, lunch, entertainment and a gift for each child from Santa is included in the fee. Reservation form included in this issue. A great way for the whole family to get into the holiday spirit. Private holiday programs are available for groups. Call 771-3040 for details.

An expanded **Night Lights** program is scheduled for December 15 through 21. Visit the Zoo all seven evenings for a holiday concert in the restaurant, glittering lights throughout the park, caroling and a visit to Santa's Village. Nothing can beat the Zoo at night especially during this festive season. All animal buildings will be open till 8 p.m. and dressed in their holiday finery.

The 1987 U.S. Snow Sculpting Competition will take place at the Milwaukee County Zoo from January 8 through January 11. A minimum of 30 teams will be competing. Plans are also underway for evening viewing, ice skating demonstrations, cross-country ski lessons, and a giant snow slide.



The Booze Brothers drew a large crowd during A La Carte.



Eating was the order of the day at Milwaukee A La Carte at the Zoo, August 15-17, 1986.

LUNCH WITH SANTA

December 6th, 7th, 13th & 14th

12:00-1:30 p.m.

Boys and girls of all ages (parents and grandparents too) can meet Santa. Receive a gift and enjoy lunch at the Milwaukee County Zoo. Tickets (including admission) per person:

\$6 - Zoological Society members

\$7 - non-members

Parking — \$2.



Schedule
Musical entertainment followed by caroling.

1:30-2:30 Santa in residence in Santa's Corner

Lunch With Santa — Reservation Form

Please send _____ tickets, for the 6th _____ 7th _____ 13th _____ 14th _____. Zoological Society members, \$6.00. Non-members, \$7.00.

(Indicate first and second choice of date.)

I am enclosing a check or money order for \$_____ payable to Zoological Society/ Lunch With Santa and a **self-addressed stamped envelope**.

Name _____

Address _____

Phone _____

*Parking fee not included

Send form and payment by December 1 to:
Lunch With Santa
10001 W. Bluemound Rd.
Milwaukee, WI 53226

LIMITED EDITION ZOO PRINTS

Limited edition prints of a Winter Sunset on Lake Evinrude by Robert Pence, a well known Wisconsin artist, are available through the Zoological Society.

All proceeds from the prints will be used for the exciting renovation of the POLAR BEAR EXHIBIT.

NAME _____

ADDRESS _____

CITY _____ STATE _____ ZIP _____

MONEY ORDER _____ CHECK _____ CHARGE TO VISA _____ MASTER CARD _____

ACCT. # _____ EXPIRATION DATE _____

SIGNATURE _____

Please reserve my limited edition print(s). I have enclosed my payment or Visa/MasterCard number for \$_____

PRINTS ARE AVAILABLE AT THE ZOOLOGICAL SOCIETY OFFICE

Please make checks payable to: ZOOLOGICAL SOCIETY OF MILWAUKEE COUNTY

MAIL TO: 10001 West Bluemound Road, Milwaukee, WI 53226

PRINTS #7-10 are each remarked differently by Robert Pence \$250 each
PRINTS #26-100 signed by Robert Pence \$100 each

Print numbers will be issued on a first come first serve basis. Once assigned a print number, buyers will have the first option to purchase the same print numbers on subsequent prints.

A special thanks to Mueller-Krus and Reliable Paper for underwriting the cost of producing the prints.

AT THE ZOO

October 4-5, 11-12—Harvest Zoo-bilee. A farmer's and craft market make a beautiful fall day at the Zoo.

October 5-15—Wild About Savings. Brookfield Square Mall will feature "Our New, New Zoo." Special evening fund raiser planned for Saturday, October 11. See page 7 for invitation.

October 25-26—Halloween Spooktacular. Children and adults can enjoy a safe Halloween at the Zoo. Venture into the Haunted Dungeon or get spooked on the Spookmobile.

November 1—Up, Up and Away. Arthritis Foundation will release 10,000 balloons from the Zoo grounds.

December 6-7, 13-14—Lunch with Santa. Call 771-3040 for details. Make your holiday season extra jolly and have lunch with Santa at the Zoo.

December 15-21—Holiday Night Lights. The Zoo will come alive with holiday spirit as carolers stroll through the grounds and trees twinkle with magical Christmas lights.

January 8-11—1987 U.S. Snow Sculpting Competition. Teams from across the nation will create beautiful snow sculptures in hopes of becoming the 1987 champions.

January 25—Samson Stomp. Call 771-3040 for details about this annual Zoo run.

ALIVE

Published Quarterly by the
Zoological Society of Milwaukee County
10001 West Bluemound Road
Milwaukee, Wisconsin 53226

Lillian Ramaker Boese, Executive Director
Kerry J. Bublitz, Editor

In support of Milwaukee County Zoo
Gilbert K. Boese, Ph.D., Director

Accredited by the
American Association of
Zoological Parks and Aquariums

Cover photo reprinted courtesy of The Milwaukee Journal — George R. Cassidy.