

# *ALIVE*

FALL 1988





by Dr. Gilbert K. Boese



**H**ave you seen our new gorillas? They arrived Thursday, September 22, just three days prior to the 1988 American Association of Zoological Parks and Aquariums (AAZPA) Annual Conference. They were of special interest to our Zoo colleagues and I believe they will be of interest to you, too.

Linda and Ngajji are beautiful creatures. You'll read even more about them and the Zoo's plans for our new Great Ape facility in the article on page 4.

I, personally, am excited about the addition of these gorillas to our collection. We now have the beginnings of a social group which will potentially lead to successful reproduction. The completion of the new facility in 1990 will move Milwaukee another step closer to becoming a leader in the conservation and propagation of gorillas.

As you will learn from the feature story on page 10, the Zoological Society has and will continue to support our outstanding Education Department. The opening of The Dairy Council of Wisconsin presents The Education Center provides the foundation for learning for hundreds of thousands of Wisconsinites.

We encourage you to visit the Stackner Heritage Farm and see The Education Center for yourself. We envision this facility as a resource for not only organized groups, but all Zoo visitors.

Your generous support through the Capital Campaign is now a visible sign on the Zoo grounds. The Education Center, the Dairy Complex, the penguin exhibit, the dolphin theater, the underwater viewing of the polar bears and the Peck Welcome Center are a testament to our collective efforts.

I'd like to encourage you to visit us this fall and winter. We have many special programs for our "family." The Halloween Spooktacular and the Dungeon of Darkness are two fall favorites. Our local community is helping with these activities: Milwaukee-NARI/Home Improvement Council, Fuji Film and Camera, McDonald's and WOKY/WML.

Please take special note of Burger King's Behind-The-Scenes Weekend, November 12-13. We're opening the hospital, primate kitchen, bear den and many other sites to Zoo visitors on this weekend only.

Don't forget to look in this issue for a reservation form for Lunch With Santa. This year the festivities will take place in the new Peck Welcome Center.

As you can see, from gorillas to Lunch With Santa we continue our commitment to provide you with quality animal care, exhibitry and family programs.

# ALIVE MAGAZINE

Published quarterly by  
the Zoological Society  
of Milwaukee County

## Board of Directors

### Directors:

John Burns  
Paul Counsell  
Patricia B. Dalton  
Stephen M. Dearholt  
Robert Elliott  
Richard J. Glaisner  
John A. Hazelwood\*  
Chris Javins  
Dr. Leander R. Jennings  
Robert A. Kahlor  
Ted Kellner  
Thomas C. Lathrop  
D.F. (Jack) McKeithan  
Sandi Moomey  
William Morrissey  
Bernard Peck  
Anthony J. Petullo  
Jack Recht  
Jerry Reiser  
Jay H. Robertson  
Michael Schmitz  
John W. Taylor  
Mrs. Robert A. Uihlein  
Joan Urdan  
Allen W. Williams, Jr.  
Carol Wythes  
Bernard Ziegler, III

\*President

Lillian Boese, Executive Director  
Zoological Society  
Gilbert K. Boese, Ph.D., Director  
Milwaukee County Zoo

## ALIVE STAFF

Kerry J. Bublitz, Editor  
Jay Jocham, Graphic Designer

### Contributors:

Christine Baar, Membership  
Bev Greenberg, Development  
Robin Higgins, Zoo Pride  
Betsy Johnson, Public Relations  
Cheryl Lee, Special Events  
Mary Thiry, Education

Cover photo by Mike Nepper  
Back cover photo by Richard Brodzeller

Accredited by the American Association  
of Zoological Parks and Aquariums

# Fall 1988

VOLUME 8, ISSUE 4

## FOCUS

### Gorillas, gorillas, gorillas.

Milwaukee has always been a gorilla town and the Zoo has plans to make sure it stays that way.

4

### Education at the Zoo is

in session with the opening of the new building, sponsored by The Dairy Council of Wisconsin.

10

## DEPARTMENTS

Direct Address	2
What's Gnu	9
Platypus Society	13
Membership Perks	15
Zoo Pride	16
Pack Your Bags	17
In Session	18
Calendar	19



4



9



10

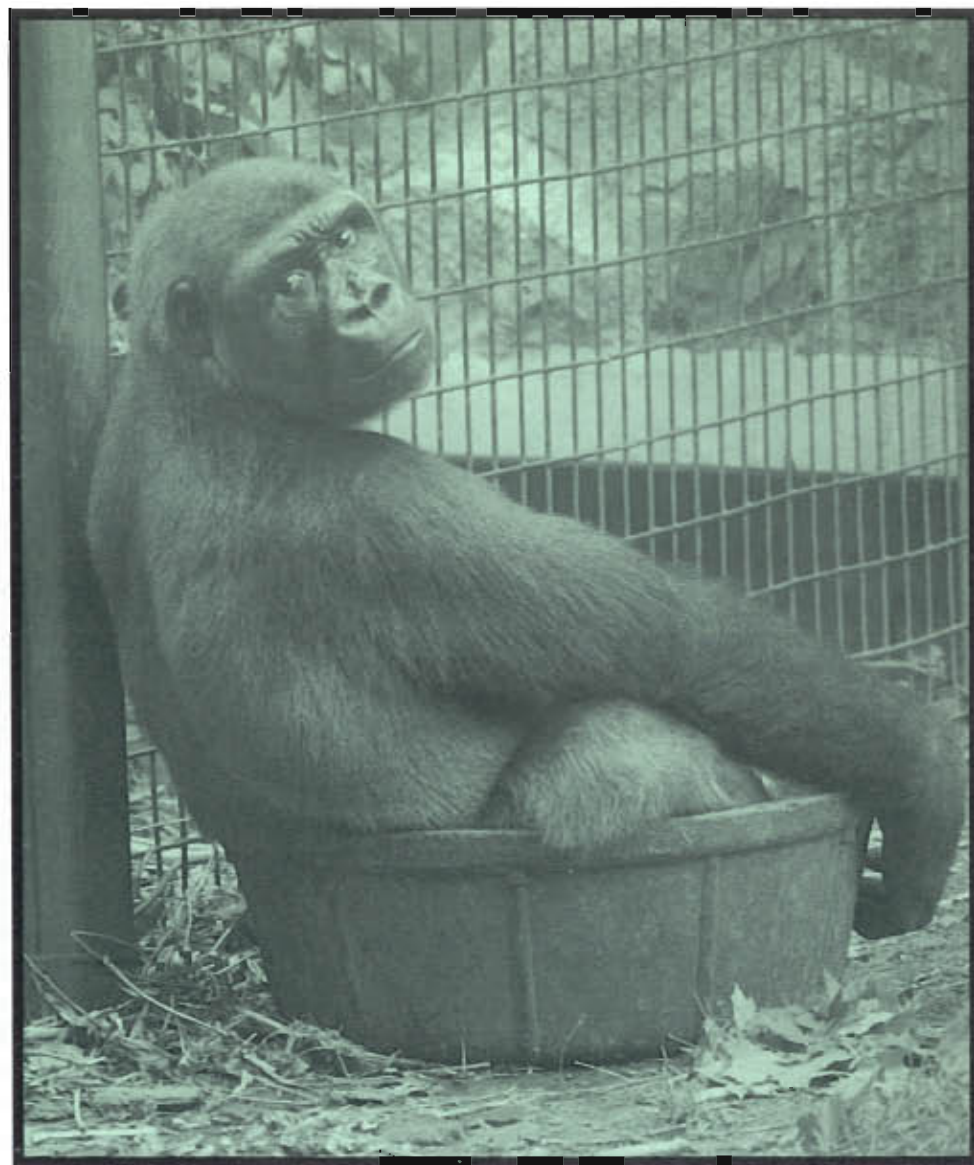
# Going ape over gorillas: no laughing matter

by Bruce Beehler, D.V.M.

In late March of this year, I joined representatives from 20 zoos and several advisors to work towards finalizing a North American Species Survival Plan (SSP) for gorillas. This master plan has the stated objective of maintaining 90 percent of the genetic diversity found in the captive gorilla population for a period of 200 years. This article is intended to provide an update on what the Milwaukee County Zoo is doing to help achieve these goals.

There are only 288 Western Lowland Gorillas in North America. At first that may seem like a lot of gorillas but 288 people would not fill a small auditorium. Moreover, long term trends show that the population is gradually declining. The average age of individuals is increasing and the reproductive rate of gorillas falls off sharply with age. It is essential that the reproductive rate of existing gorillas be increased to sustain a population for a period of centuries.

Many zoos, including the Milwaukee County Zoo, are sending gorillas all over the nation to put them in favorable reproductive situations. These moves all must be planned carefully, not only to ensure genetic and age compatibility, but also to account for the individual gorilla's compatibility with other gorillas.



Obsus ponders another encounter with Tanga who weighs 450 pounds to his 200 pounds.

It has been known for many years that gorillas in the wild are social animals who live in more or less stable bands numbering from approximately two to 30 individuals. In recent years, it has become evident that gorillas must learn appropriate behavior from other gorillas as they mature in these social groups. This is true for gorillas both in the wild and in captivity. Previous zoo practices of raising gorillas alone or with one or two other gorillas of the same age have complicated efforts to incorporate these gorillas into successful reproducing groups.

The Milwaukee County Zoo's gorilla trans-

actions must account for the individual's social background to enhance the potential reproductive success. Following is a brief history and summary of each of the gorillas that Milwaukee County Zoo owns or is directly involved with.

We currently have four gorillas at the Milwaukee County Zoo.

Tanga is a 29-year-old silverback male who came to Milwaukee in 1960 and was raised with a female of the same age, named Terra. We know now that this was an inadequate situation for learning gorilla behaviors, and as Tanga and Terra matured,



Linda and Ngaji investigate their new home (top photo). Area supervisor, Sam LaMalfa, has developed a positive relationship with Tanga (bottom photo).



they never showed any interest in breeding with each other. A breakthrough was obtained in Tanga's behavioral patterns when we were fortunate enough to obtain a socialized female gorilla named Diane from the Los Angeles Zoo, Los Angeles, California, for several years. Diane taught Tanga appropriate gorilla behavior, including reproductive behaviors.

Tanga is currently with Femelle, a 26-year-old female gorilla from the National Zoo, Washington D.C. Tanga proved his reproductive abilities with Femelle, with the birth of an infant that unfortunately was still-

bom due to umbilical strangulation in December, 1986. Tanga and Femelle are still reproductively active, but at this writing, there is no evidence that Femelle is pregnant.

In 1984, the Zoo obtained Obsus from the Stuttgart Zoo, Stuttgart, Germany. Obsus is currently 7½ years old. As part of his socialization we have borrowed Quito, another 7-year-old male gorilla from the Metropolitan Boston Zoos, Boston, Massachusetts. Their introduction was a complete success.

It is important that young gorillas such as

Quito and Obsus be incorporated in groups with adults as they mature both for socialization purposes and to gradually supplant the aging silverbacks as the reproductive males.

Earlier this year Quito and Obsus were introduced to Tanga and Femelle. Quito had no concept of how to act and challenged Tanga during the introduction. Quito's 180 pounds were no match for Tanga's 420 pounds. Tanga made no attempt to seriously injure Quito, but he left no doubt as to who was in charge of the group. Obsus was more cautious but ended up learning the same session in the same manner.

The introductory process with Tanga was preceded by the successful introduction of the two young males with Femelle. This process is continuing, and now all four animals are together most of the day, and most interactions are related to either Quito or Obsus showing (at least in Tanga's eyes), too much interest in Femelle. We believe that this introduction has been valuable for all four of the animals and are now ready to proceed toward the next step in establishing a viable reproductive band of gorillas.

Last year, we acquired a social group of five gorillas from the Wassenaar Zoo, Wassenaar, Netherlands. This group is currently residing in the Fort Worth Zoo, Fort Worth, Texas, while we await the expansion of our facilities.

The group, which has been together as a compatible social group for many years, is headed by Bobbi, a 27-year-old silverback male. Bobbi has been a gentle stepfather for all of the gorillas born into this group, but is himself infertile.

Bibisana is a 35-year-old female who has never had offspring. Earlier this year a team of veterinarians and physicians coordinated by the Dallas Zoo, Dallas, Texas, suc-

*continued on next page*



cessfully removed a large uterine tumor from Bibisana. To halt the spread of the cancer, it was necessary to remove her reproductive tract. During the surgery, veterinarians performed the first successful in vitro fertilization of a gorilla ovum. It is hoped that Dallas Zoo's success will provide additional opportunities to enhance the reproduction of this species in the future.

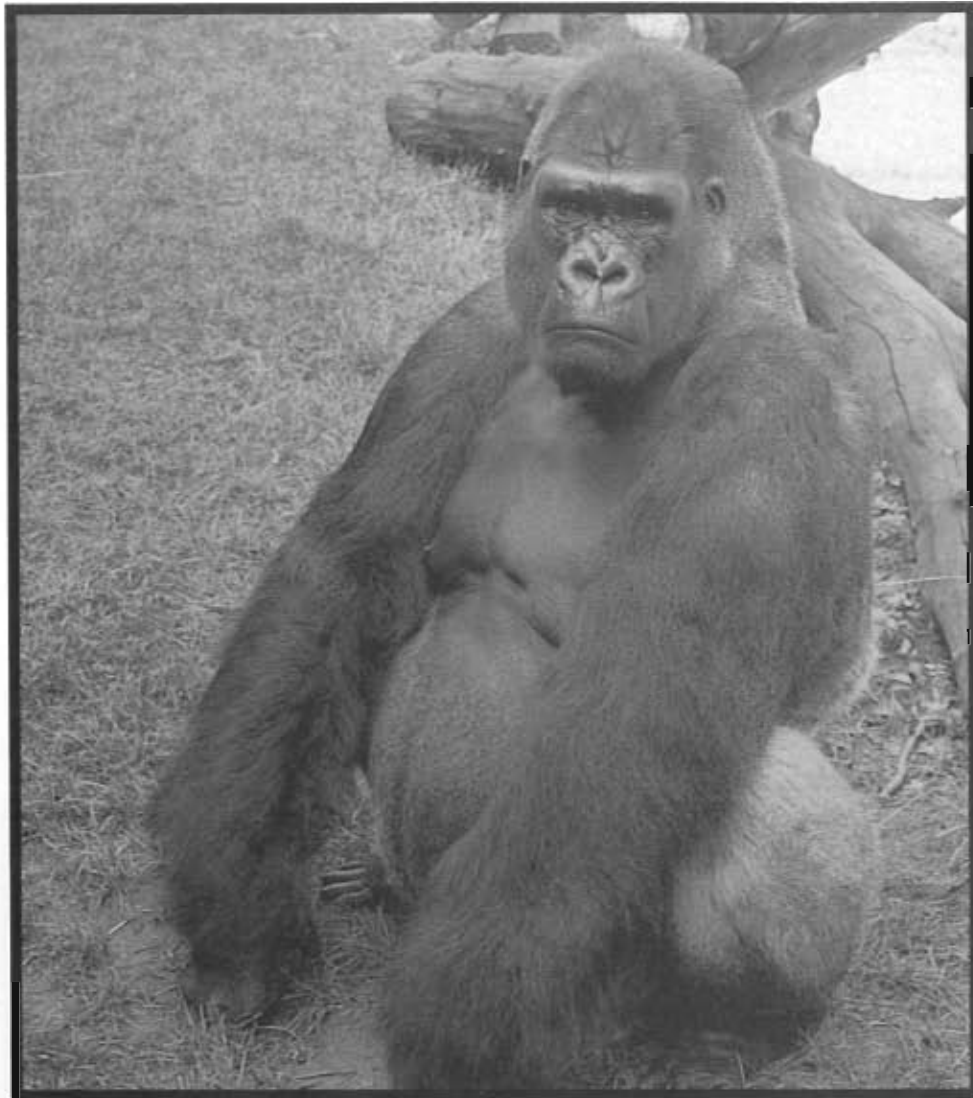
Linda and Ngajji are two female gorillas in their early 20s who are members of this group. Both have been reproductively successful. One of Linda's offspring, Vip, a 10-year-old male, is still with the group. Vip will soon be traveling to the Metropolitan Boston Zoos, Boston, Massachusetts, to join two breeding age female gorillas, and hopefully will form a nucleus for a future gorilla band.

Linda and Ngajji arrived in Milwaukee in September to be introduced to Obsus, Tanga and Femelle to form a breeding band. At the same time, Quito left for Texas to join Bobbi and Bibisana in Fort Worth to continue his socialization. Quito will hopefully be incorporated into a breeding band within the next two years.

As if all of this wasn't complicated enough, we have several other gorillas at several other zoos. Terra, who is now 29-years-old, was raised with Tanga but no breeding ever occurred. Terra lived with Samson for several years, again without any breeding occurring. Finally, Terra was sent to Lincoln Park Zoo, Chicago, Illinois, where she was introduced to no less than four different adult males before finally breeding successfully and producing Mandara. Possibly due to Terra's lack of socialization as a youngster, Terra did not know how to successfully nurse Mandara, and Mandara had to be separated and was hand raised to the age of three here in Milwaukee with the great support of the "Mandara Mom" volunteers and the primate staff.

As part of her socialization process, Mandara was introduced to a gorilla one year her junior, Kuja. Both Kuja and Mandara are now at the National Zoo and have successfully become part of a group of five gorillas. Urine hormone analysis has revealed that Mandara is in the midst of puberty, and may begin reproducing as early as next year.

Finally, there is a 13-year-old male gorilla Tino, whom we obtained from the Osnabruck Zoo, Osnabruck, Germany, in 1983,



*Tanga, sitting regally in his outdoor yard, is a silverback — the largest of Milwaukee's gorillas.*

and who is currently residing at the Hogle Park Zoo, Salt Lake City, Utah. Tino is currently with a female of breeding age but currently there has been no successful reproduction, despite breeding. Our reproductive physiologist, Dr. Nan Schaffer, will be conducting a reproductive analysis on Tino in the near future.

Milwaukee County Zoo's long term commitment to the survival of the gorilla will continue to develop with the upcoming new Great Ape facility, one of the Zoo's Capital Campaign projects. A significant portion of the funding for this project has been provided through the Zoological Society and its members. Construction for this new facility will begin this fall and will be completed in Spring, 1990. The theme of the facility will be the West African Rain Forest and will feature both gorillas and bonobos (pygmy chimpanzees).

The gorilla portion of the facility will feature an introductory tropical rain forest room for the visitor, a 2,000 square foot interior gorilla exhibit simulating the West African rain forest and an 8,000 square foot exterior exhibit where visitors will be able to

see gorillas eye to eye. This facility will allow us to keep two extended family groups of gorillas comfortably. The sky-lit interior holding facilities, which are 20 feet high in places, will exceed the gorilla's current exhibit facility.

By carefully managing the placement, socialization and husbandry of gorillas, the Milwaukee County Zoo will continue its commitment to a nationwide effort toward the conservation of an amazing animal.

*Dr. Beehler is the Director of Animal Management and Health.*

## Ghosts, goblins and ghouls, oh my!

As the leaves begin to fall and a chill comes into the air get ready for some ghostly fun. The "Dungeon of Darkness" is the setting, the characters . . . ghosts, spooks, and your imagination. The Dungeon, sponsored by Zoo Pride and the Milwaukee/NARI Home Improvement Council Inc., will be open on Friday, October 21 to Sunday, October 23 and Friday, October 28 to Sunday, October 30. The Dungeon doors will be open from 6 p.m. to 9 p.m. Spookmobiles will bring you to the Dungeon (the basement of the pachyderm building) and then you're on your own until the return trip!

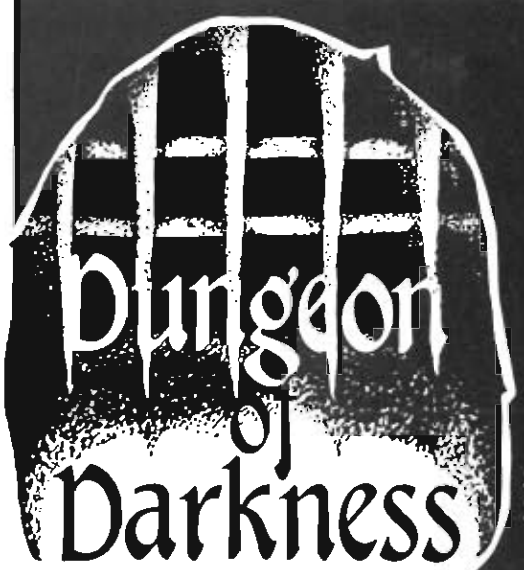
"A Neat Place to Meet For a Safe Trick or Treat" is the theme for the Halloween Spooktacular. The event, co-sponsored by Fuji Film, McDonald's, Milwaukee/NARI, Home Improvement Council, Inc. and WOKY/W MIL, runs 9 a.m. to 4 p.m. on Saturday, October 29, and Sunday, October 30.

Come in costume and ride the Ghost Train and Spookmobile, sneak another peak, if you dare, at the Dungeon of Darkness, walk with other costumed friends in the Costume Parade, and "trick or treat" through the Zoo. Ronald McDonald, Mac Tonight and other characters will greet younger children in the Stackner Heritage Farm where the McDonald's Pumpkin Patch and picture taking opportunities await you, 11 a.m. to 1 p.m. Receive a free disposable Fuji camera while supplies last. Feel free to bring along your very own pumpkin to add to the patch.

On Saturday, October 29, the 2nd Annual Fuji Costume Fun Run will begin at 5 p.m. Runners will be treated to Zoo admission, the Dungeon of Darkness, and a Monster Mash of entertainment. Animal noses will be provided to enhance even the best costumes.

Awards will be given to the first three overall winners in four divisions, adult-male, adult-female, junior-male, and junior-female. Special prizes will also be given to the first


*continued on next page*




**The Dungeon Awaits those who Dare . . .**

Friday through Sunday  
**October 21, 22, 23**  
and  
Friday through Sunday  
**October 28, 29, 30**

Dungeon Doors Open 6 p.m. to 9 p.m. Enter at the Zoo's Pachyderm Building

Sponsored by ZOO PRIDE and 

**FUJI COSTUME FUN RUN**

**COURSE:** 2 miles

**DIVISIONS:** Adult-Male, Adult-Female, Junior (14 & under) - Male, Junior (14 & under) - Female. Awards will be given to the first three overall winners in each division. (This is not a scored event)

**AWARDS PRESENTATIONS:** 7 p.m. (Peck Welcome Center)

**ENTRY FEE:** \$6.00 pre-registration  
\$8.00 race-day registration (Both are non-refundable)

**REGISTRATION:** Mailed entries must contain FULL FEES and be received by October 17, 1988. A RACE CONFIRMATION CARD will be sent to all mailed entries. After October 17th, all runners should register in person at the Zoo. Runners may also register on RACE DAY from 3 p.m. to 4:30 p.m. RACE DAY PACKETS should be picked up on race day from noon to 4:30 p.m.

- Come in costume but leave your face to us, a plastic animal nose will be included in your race packet.
- Entry fee also includes race number, admission and parking fee for runners after 12 p.m. (noon) on Saturday, October 29, 1988.
- MONSTER MASH, 6 p.m. - 10 p.m. entertainment & fun
- Refreshments after race.

**FUJI FILM & CAMERAS**  
FOR BREAKTHROUGH PICTURES

**Halloween Costume Fun Run**      **Saturday, October 29, 1988**      **5:00 p.m.**

NAME (LAST NAME FIRST) \_\_\_\_\_

ADDRESS \_\_\_\_\_

CITY \_\_\_\_\_ STATE \_\_\_\_\_ ZIP \_\_\_\_\_

Area Code \_\_\_\_\_ Telephone Number \_\_\_\_\_ SEX \_\_\_\_\_ AGE \_\_\_\_\_  
 Male       Race Day  
 Female       Race Day

RELEASE OF ALL CLAIMS:  
 To be signed by each participant (or parent/guardian if under 18):  
 I hereby release The Milwaukee County Zoo, and all sponsors, officials and volunteers involved in this race from any liability incurred or in any way related to my participation in the 1988 Halloween Fun Run.

Signed \_\_\_\_\_ Date \_\_\_\_\_

Total fee enclosed \$ \_\_\_\_\_  
 Entry Fee \$6 (non-refundable)  
 \$8 race day (non-refundable)

\*Each entrant must submit all information or registration is not complete.

MAKE CHECKS PAYABLE TO AND MAIL TO:  
**Halloween Fun Run**  
 Zoological Society  
 10901 W. Bluemound Rd.  
 Milwaukee, WI 53226

I am unable to participate in this event. Please accept my contribution of \$ \_\_\_\_\_







# Education building heralds new era in Zoo learning

by Peter Feldner

The school bell rang on August 25 to proclaim the grand opening of The Dairy Council of Wisconsin presents The Education Center at the Milwaukee County Zoo.

A year and a half of dreaming and planning came to fruition because of a \$450,000 gift from The Dairy Council of Wisconsin. Additional funds were provided by the generous gifts of the M.W. Kasch Company, the American Express Foundation, the Adeline Thiesen Memorial, and individuals' contributions to the Zoological Society of Milwaukee County.

The project began with the planning phase in January, 1987, and was a team effort from the beginning. Harl Forston, project manager for the James Luterbach Construction Company, and Kurt Spiering from the firm of Kahler, Slater, Torphy Architects Inc., used a design/build concept to improve the design throughout all phases of construction. The design/build method provided the flexibility that allowed the contractors to wrap The Education Center around existing rest rooms located in the Stackner Heritage Farm. It also let them shift the site plan to save as many trees as possible.

Many others were also a part of the design team. Representatives from the Zoological Society's Board of Directors, the Zoological Society's Education Committee, Milwaukee County's Department of Public Works, Milwaukee County's Commission for Handicapped and Disabled Persons, the Zoo's Education Department, and the Zoo's Building and Grounds Department played integral roles in the process.

They produced an 8,444-square-foot facility which will serve more than 200,000 people every year. Its offices will house five full-time employees of the Education Department who will develop educational



## Stackner donation opened gate to new development

The Stackner Family Foundation, Inc. gave a large grant to "Our New, New Zoo" Capital Campaign in 1986. With heartfelt appreciation for that generous gift, the children's zoo was renamed the Stackner Heritage Farm. The Birds of Prey show, the Dairy Complex and The Dairy Council of Wisconsin presents The Education Center have become integral and dynamic additions to the Stackner Heritage Farm.

However, more exciting and educational exhibits are soon to follow. A Living Laboratory will show the interface between rural and wild Wisconsin. For instance, a domestic or rural play area will compliment a natural recreational site. A wild flower walk, quiet and ecological zones, and alternative energy exhibits, including a grist mill, will enhance an already enlightening area.

But, the plans do not stop. A walk through of an actual working animal barn is planned as well as a covered bridge taking Zoo visitors from the rural to wild worlds. Large ponds will be developed and will allow underwater viewing. A crawl through cave to examine and experience cave life is being designed.

If that doesn't sound exciting enough, a crawl through badger den will allow for further adventurous endeavors. Look for these new openings. This five year project has been inspired and made possible by the Stackner Family Foundation's generosity and community concern.

The Education Center architecture is in keeping with the farm theme (far left). The lobby will be home to changing educational exhibits (middle photo). The three classrooms are ready for larger groups than just this lone giraffe (right photo).

programs and materials and serve as resources to the community. The lobby will feature an area for rotating exhibits covering nutrition and conservation issues.

The building's main corridor will be filled with "building blocks." Each building block carries the name of a person, group or family who donated \$50 to "Our New New Zoo." More than 5,700 building blocks have been dedicated to date but many are still available. Call 258-2333 for more information.

The central feature of the building is its

three large classrooms. University professors, educators and Zoo Pride Volunteers will conduct programs and workshops for people, age three years and up. Preschoolers will learn about themselves and the world around them by participating in games and hands-on activities in the Barn Owl Room. School and organized youth groups will use the Timber Wolf Room as a base to study topics ranging from adaptation to journalism to nutrition. Advanced students will earn college credit through the University of Wisconsin-Milwaukee and

Mount Mary College while adults study a variety of subjects including the finer points of Zoo photography in the Cricket Frog Room.


During the summer, all three classrooms will be used by children participating in an expanded summer camp program. Throughout the year, teachers will attend workshops to learn how to use the Zoo as an educational resource. Teachers will also have access to the Education Resource Room.

In the Resource Room, teachers will find

the latest in computer courseware, audiovisual resources, and bound materials. They will be able to use these to custom build Zoo programs for their students.

The Dairy Council of Wisconsin presents The Education Center is the newest addition to "Our New New Zoo." Its pivotal position in Stackner Heritage Farm will help the Zoo become a living campus for educational programming within the community.

When the bell rang on August 25, it announced more than the opening of a new building. It reaffirmed the commitment to

education by the Zoo and the Zoological Society of Milwaukee County. 

*Peter Feldner is the School Program Coordinator. He has been with the Zoo's Education Department since September, 1981.*



# Platypus Society honors community leaders

On Friday, August 26, the Platypus Society Dinner was hosted at the Milwaukee County Zoo. The Platypus Society dinner is designed to thank the Corporate/Patron members for their generous annual support.

The evening, attended by 250 guests, featured the Great Gatsby theme. Upon arrival, guests were invited to have their pictures taken posing with Excaliburs, graciously donated by Mr. Laird Cleaver and Mr. Bernard Peck. Singer/banjo player Lisa Edgar and her bass accompanist Dave Martinsek entertained at the entrance to the Zoo. Following a short tour of the Zoo, diners were escorted to the Stackner Heritage Farm for a little "hooch" and the awards ceremony.

Platypus Society members were greeted by the Zoo balloon (left). Sandy Williams received the prestigious Emu Egg Award (right).



Five awards were presented to those individuals and corporations who have displayed an outstanding commitment to the Zoological Society of Milwaukee County and the Milwaukee County Zoo. This year's "Elephus maximus" award recipients were The Fox Company, Inc. Lithographers, and The La Joy Restaurant Corporation. Christin Clark Cleaver and Rheinhold Hugo, each long-time Zoo and Society supporters, received the "Spheniscus humboldti" award for outstanding individual involvement.

The highest award of the evening, the "Emu Egg" Award, was given to Allen W. Williams, Jr. Williams was elected into the Royal Order of the Emu because of his dedication to conservation and the Milwaukee County Zoo. Williams is a past president of the Zoological Society and was instrumental in the Society's successful completion of its \$12.9 million Capital Campaign goal.

After the awards ceremonies, guests enjoyed an elegant Gatsby picnic and entertainment by violinist Kathleen Brauer.



## Join the Platypus Society: protect wildlife and enrich humanity

You are invited to become a Platypus Society Corporate/Patron Member of the Zoological Society. Working together, we can help assure the Milwaukee County Zoo's top notch ranking — an outstanding Wisconsin tourist attraction and a benchmark of civic pride.

Platypus Society benefits include: recognition on the Corporate/Patron donor page in Alive, Bi-Annual Corporate/Patron Newsletter, premiere showings of new Zoo exhibits, VIP Behind-the-Scenes tours at the Zoo, Bronze Platypus Sculpture for \$2,500 and above donors, an elegant, enchanting twilight Platypus

Society dinner at the Zoo, Zoological Society Committee involvement, and your name proudly displayed on the Corporate/Patron Recognition Board at the entrance of Wisconsin's #1 tourist attraction.

There are five levels of annual donations recognized within the membership of the Platypus Society. You choose the category which matches your resources and interest.

Your association with the Zoo will be a successful investment in our community. For more information, please call Bev Greenberg at 258-2333.

### Platypus Society Membership

Corporate/Patron Name \_\_\_\_\_

Address \_\_\_\_\_

Phone \_\_\_\_\_

Individual Designee \_\_\_\_\_

Patron Membership	Corporate Membership
_____ \$500	_____ \$1,000
_____ \$1,000	_____ \$2,500 (Silver)
_____ \$2,500 (Silver)	_____ \$5,000 (Gold)
_____ \$5,000 (Gold)	_____ \$10,000 (Platinum)

Joining the Platypus Society is an opportunity to invest in our world class Zoo!

**10,000 PLATINUM CORPORATE**  
Marquette Electronics Foundation

**5,000 GOLD CORPORATE**  
Beck Carton Corp.  
Central Control Alarm Corp  
Evan and Marion Helfaer Foundation  
Northwestern Mutual Life Insurance Company

**2,500 SILVER CORPORATE**  
Beatrice Cheese Inc.  
Ferro Marketing Inc.  
Frito-Lay, Inc.  
Georgia-Pacific Corp.  
Chr. Hansen's Laboratory  
Heller Foundation  
Hyatt Regency Milwaukee  
Johnson Controls Foundation  
D. Kurman Company  
Intrepid Corp.  
Little Caesar's Pizza  
M/GIC Investment Corp.  
Marshall & Ilsley Bank  
Milwaukee Insurance  
The Milwaukee Journal/Milwaukee Sentinel  
Paper Machinery Corporation  
Peck Meat Packing Company  
Remus Catering  
Ruby Chevrolet, Ruby Oldsmobile  
A.O. Smith Foundation  
Sundance Photo, Inc.  
Time Insurance Company  
WTT-TV6  
Wiscol, Inc.

**1,000 CORPORATE**  
A.B. Data Inc.  
ATM Test Sieves, Inc.  
Art Newman, Inc.  
A to Z Printing Co., Inc.  
Aladdin Label, Inc.  
Allen Bradley  
American Express Foundation  
Andrae Electric  
Associated Commerce Bank  
Automated Systems, Inc.  
Badger Meter Foundation  
Badger Truck Center  
Bayshore Clinical Laboratories  
Benlo Chemicals, Inc.  
Boston Store  
The Lynde & Harry Bradley Foundation, Inc.  
The Burgmeier Company  
Capitol Stampings Corp.  
Chempac, Inc.  
Consolidated Papers Foundation, Inc.  
Cramer-Krasselt  
Creative Food Service  
The Gretchen & Andrew Dawes Endowment  
Delzer Lithograph Company  
Derse Foundation  
Eaton Corporation  
Edwardo's Natural Pizza Rest.  
Electri-Wire Corporation  
Essential Chemicals Corp.  
Eye Care Specialists, S.C.  
Falk Corporation  
Findley Adhesives, Inc.  
First Bank Foundation, Inc.  
First Financial Savings Association  
First Wisconsin Foundation, Inc.  
The Fox Company, Inc. Lithographers  
Fredman Bag Company  
General Electronics  
Gentron Corporation  
Edward E. Gillen Co.  
Great Lakes Marketing  
Great Lakes Vet. Clinical Lab  
Grede Foundation  
Grunau Company, Inc.  
R.S. Hammerschlag & Co. Insurance  
G. Heileman Brewing Company, Inc.  
Heinemann's Restaurants  
Holzman Furs  
IBM Corporation  
In-Place Machining Co.  
Carol Janet Diamond Imports

Jacobs & Riches, Inc.  
Jacobus/Heritage Foundation, Inc.  
Jefferson Smurfit Corp.  
Jefferson Transport Service  
Johnson Brass & Machine Foundry  
Kahler Slater Torphy Architects  
Klein Metal Finishing, Inc.  
Klement Sausage  
Koss Foundation  
Charles A. Krause Foundation  
Otto L. Kuehn Co.  
La Joy Restaurant Corp.  
Lakeside Oil Company  
Lappin Electric  
Leslie Paper Foundation  
Lied's Green Valley Gardens  
Manpower Foundation, Inc.  
The Marcus Corporation  
The Marine Foundation, Inc.  
Maxine Interior Landscapes, Inc.  
Mechanical Industries  
Megal Development Corporation  
Miller Brewing Company  
Miller Compressing Company  
The Milwaukee Brush Mfg. Co.  
Milwaukee Electric Tool Corp.  
Milwaukee Northside Warehouse, Inc.  
Milwaukee Valve Company  
Moebius Printing Company  
Monarch Corporation  
Morse/Diesel - Milwaukee  
Mueller Food Service  
National Business Furniture  
William W. O'Brien, Inc.  
Olsten Temporary Services  
Orion Corporation  
PH Orth Co.  
Pabst Brewing Company  
Mark Pasch Ltd.  
Pepsi-Cola Bottling Company  
The Perlick Company, Inc.  
Peterbilt of Wisconsin, Inc.  
Pillar Corporation  
Pepperpower Foundation  
Quad/Graphics, Inc.  
RTE Corporation  
Reinhardt, Boemer, Van Deuren, Norris & Rieselbach, S.C.  
Rexnord Foundation  
Reycon Construction  
Ritus Rubber Corp.  
Robertson-Ryan & Associates  
D.G. Robinson Co., Inc.  
C.G. Schmidt, Inc.  
M.M. Schranz Roofing, Inc.  
Seven Up/Royal Crown Cola/Dr. Pepper Bottling Co.  
Shully Catering, Inc.  
Stewart Development, Inc.  
Silverbird Lanes/Silverbowl Corp.  
Stackner Family Foundation  
Stein Garden Centers, Inc.  
Stern's McDonald's Rest. Group  
Sterling, Inc.  
Super Sky Products, Inc.  
Tamarack Petroleum Co., Inc.  
Taylor Electric  
Tombstone Pizza Corporation  
Trade Press Publishing Company  
Tri City Bank  
Ulshlein Electric Co., Inc.  
Universal Foods Corporation  
Usinger Famous Sausage  
Valuation Research Corporation  
Kurt Van Engel Commission Co., Inc.  
The Video Station  
Vilter Foundation, Inc.  
VICOR, Inc.  
WISN-TV  
WQKY/WML  
R&B Wagner, Inc.  
Wauwatosa Savings & Loan  
West Bend Company  
Whyte Hirschboeck S.C.

Wisconsin Bell, Inc.  
Wisconsin Electric Power Company  
Wisconsin Packing Company  
Arthur Young  
The Ziegler Foundation  
Zimmer Thomson Associates, Inc.

**5,000 PATRON**  
Alice Bertschy Kadish

**2,500 SILVER PATRON**  
Leon and Bonnie Joseph  
Bill Borchert Larson  
John Taylor

**1,000 PATRON**  
William & Priscilla Chester, Jr.  
Mrs. John Cleaver  
Pat Kems  
James J. King  
John E. Koenitzer  
Allen C. Koepke  
Julilly Kohler  
Dr. Michael C. Kubly  
Frank & Betty Kullmann  
Thomas Lathrop  
Eugene F. & Gwendolyn Lavin  
Gordon & Jean Lee  
David & Carole Leer  
Donald J. & Ruth L. Lewis  
Mrs. David K. Lindsay  
Melba & Carl Lutzke  
Douglas M. MacNeil  
Irwin Maier  
Claire D. Marks  
Masters Gallery Foods  
Eugene Martin  
Quinn & Jane Martin  
Garrett McIntosh  
Mrs. Robert Ulshlein  
Margo & Jack Winter  
Donald and Rosemary Zellmer  
Bernard C. Ziegler II

**500 PATRON**  
Howard E. Alcorn  
Calvin H. Baker  
Donald and Mary Peterson  
Joan Pick  
Richard J. Podell  
Bill & Mary Ann Pollock  
Walter Ratai  
Jack Reicht  
Lois Reid  
Robert & Marion Rice  
David L. Ritz  
A.D. Robertson  
Allen & Vicki Samson  
Barry S. Sattel  
Heinz Scherzer  
Charlotte & Bill Schield  
Joseph F. Schoendorf, Jr.  
Jan K. & Ruth Sedivy  
Joseph Sileno Jr.  
Gene E. Soldatos  
Mrs. Leon Stein  
Martin F. & Barbara Stein  
Lorraine Straszewski  
James Taylor  
Peter J. Teller  
Miles Theurich  
John E. Thomas  
Mrs. Albert Trostel, Jr.  
Thomas and Priscilla Tuschen  
Herman A. Ulshlein  
James & Joan Urdan  
William D. VanDyke  
Bob & Rose Vohl  
Judge & Mrs. Jeffrey Wagner  
Lowell Warshowsky  
Bob & Marian Wierman  
Robert & Joyce Weiss  
Allen W. Williams, Jr.  
J.O. Wright

Robert Goldberger, M.D.  
Sandy & Leonard Golden  
G.L. Gosewehr  
Martin J. Greenberg  
David S. Gronik, Jr.  
John Hazelwood  
James H. Hoffman  
Madeline J. Howard  
R. Robert Howard  
Dr. Michael Jeeckels  
Dr. Leander R. Jennings  
Jeffrey C. Kasch  
Jonathan Kay  
Ted Kellner  
Pat Kems  
James J. King  
John E. Koenitzer  
Allen C. Koepke  
Julilly Kohler  
Dr. Michael C. Kubly  
Frank & Betty Kullmann  
Thomas Lathrop  
Eugene F. & Gwendolyn Lavin  
Gordon & Jean Lee  
David & Carole Leer  
Donald J. & Ruth L. Lewis  
Mrs. David K. Lindsay  
Melba & Carl Lutzke  
Douglas M. MacNeil  
Irwin Maier  
Claire D. Marks  
Masters Gallery Foods  
Eugene Martin  
Quinn & Jane Martin  
Garrett McIntosh  
Mrs. Robert Ulshlein  
Margo & Jack Winter  
Donald and Rosemary Zellmer  
Bernard C. Ziegler II

## Area openings slated by Society

The newly formed Associate Board of Directors of the Zoological Society of Milwaukee County has taken on the responsibility of increasing the friendship and revenue base of the Zoological Society.

The Associate Board is comprised of a dynamic group of people who will carry the Zoo and the Society into the future. Their present and future fundraising activities will continue the Zoo's leadership role in the areas of exhibition, education, conservation and recreation.

The Board has embarked upon an idea which not only brings the Milwaukee County Zoo to the front of everyone's mind, but also helps area businesses with new endeavors. The Associate Board invites friends to attend special "invitation only" premieres of various businesses throughout Milwaukee County. Proceeds benefit the Zoological Society of Milwaukee County.

To date the Associate Board has held four premiere events, and each was a



"roaring" success! "DKC's... a place to eat", "Nance's," the yacht "Celebration," and the Ocean Club Seafood Grill and Wolfe's Market Deli (including shopping at the following chic stores: Newbury's, The Last Detail Ltd., Paper Perfect, Picadilly Circus, The Red Fox, Marcia Gorra-Patek Creative Jewelers) have all graciously and generously opened their doors to the Zoological Society. On October 16 at 5 p.m., the Baysider is also hosting an opening event.

Join your fellow "Zoo Keyper" (Key Persons!) to welcome new businesses in our community, and help to continue the excellence we experience at Wisconsin's number one tourist attraction, the Milwaukee County Zoo. If you are interested in the "Zoo Keyper," please call 258-2333, Bev Greenberg.

*The area openings, whether on land or sea, have been fun for everyone. Here, on the yacht, Celebration, party-goers enjoyed delicious food and a one-of-a-kind view of Milwaukee.*

## Bayshore Labs make a difference

Donations. Donations are what help the Milwaukee County Zoo remain a first class institution.

Most people think of donations in terms of money. Just as important, however, are "in-kind" donations.

Bayshore Clinical Labs has made very important in-kind donations to the Zoo. Since January, 1988, Bayshore Clinical Labs has provided over \$9,000 in laboratory services including, blood work, cultures and equipment, free of charge.

Thank you employees of Bayshore Clinical Labs and thank you Ken Jaglinski, Vice President and General Manager, for your generous support.

**B**

Dedicated to Excellence

Bayshore Clinical Laboratories

## MEMBERSHIP PERKS

A membership in the Zoological Society is one of the best entertainment and educational values in the Midwest.

Your donation is utilized in educational programs, exhibit renovations, animal purchases, grounds improvements and special events.

Your card enables you to enjoy:

- FREE ADMISSION 362 days a year (includes your family and guests if indicated).
- 10% DISCOUNT at all Zoo gift shops when you present your card.
- ALIVE subscription. Our fun and educational quarterly publication.
- NIGHT IN JUNE private picnic for you and your family.
- BEAUTY AND THE FEAST annual program which hosts speakers for you and your family.
- SPECIAL MEMBERSHIP PREVIEW of new exhibits and rare animal acquisitions.
- FREE ADMISSION to over 85 other Zoos and Aquariums in the United States and Canada (see the list below).

**ALABAMA**  
Birmingham Zoo  
Pursuing Zoo

**ALASKA**  
Fair Park Zoo (Fairbanks)

**ARKANSAS**  
Little Rock Zoological Gardens

**CALIFORNIA**  
Charles Paddock Zoo (Alhambra)  
The Fresno Zoo  
The Living Desert (Palm Desert)  
Los Angeles Zoo  
Pico Green Zoo (Lodi)  
Sacramento Zoo  
San Francisco Zoological Society  
Santa Ana Zoo  
Santa Barbara Zoological Gardens

**CONNECTICUT**  
Berkshire Zoological Gardens (Berkshire)

**FLORIDA**  
Central Florida Zoological Park (Lake Mead)  
Orlando Park Zoo (West Palm Beach)  
Jacksonville Zoological Park  
Miami Metro Zoo

**GEORGIA**  
Cherokee Wild Animal Park (Albany)  
Atlanta Zoological Society

**HAWAII**  
Haleiwa Aquarium (Hawaii)

**ILLINOIS**  
Miller Park Zoo (Bloomington)  
Lincoln Park Zoological Gardens (Chicago)  
John G. Shedd Aquarium (Chicago)  
Open Gate Zoo (Peoria)  
Herman Robinson Zoo (Springfield)  
Sewell Children's Zoo (Decatur)

**INDIANA**  
Fort Wayne Children's Zoo  
Madison Park Zoo (Evansville)  
Pittsboro Zoo (South Bend)

**IOWA**  
Hawk Park Zoo of Des Moines

**KANSAS**  
Emporia Zoo  
Lee Richardson Zoo (Garden City)  
Topeka Zoological Park  
Sedgewick Co. Zoo (Botanical Gardens - Wichita)

**KENTUCKY**  
Louisville Zoological Garden

**LOUISIANA**  
Kennerly Zoological Park  
Audubon Park (Zoological Gardens - New Orleans)  
Greater Baton Rouge Zoo  
Louisiana Purchase Gardens (Zoo - Monroe)

**MAINE**  
Baldwin Zoo  
Salisbury Zoological Park

**MASSACHUSETTS**  
Framingham Zoo (Boston)  
Wareham Zoological Park (Wareham)  
Wareham Zoological Park (Wareham)

**MICHIGAN**  
Belle Isle Zoo (Detroit)  
Sibley Park Zoo (Belle Isle - Detroit)  
Detroit Zoo (Royal Oak)  
John Ball Zoological Gardens (Grand Rapids)  
Wayne Park Zoo (Livonia)

**MINNESOTA**  
Lake Superior Zoological Gardens (Duluth)  
Minnesota Zoo (Apple Valley)  
St. Paul's Como Zoo

**MISSISSIPPI**  
Jackson Zoological Park

**MISSOURI**  
Kansas City Zoological Gardens  
St. Louis Zoological Park  
Cameron Park Zoo (Springfield)

**NEBRASKA**  
Polk Children's Zoo (Lincoln)  
Henry County Zoo (Omaha)

**NEW JERSEY**  
Columbus Zoo (Bridgeport)  
Turtle Back Zoo (W. Orange)

**NEW MEXICO**  
Rio Grande Zoological Park (Albuquerque)

**NEW YORK**  
Buffalo Zoological Gardens  
Barnett Park Zoo (Liverpool)  
Roosevelt Park Zoo (Binghamton)  
Saratoga Park Zoo  
Seneca Park Zoo  
Ulster Zoo

**NORTH CAROLINA**  
North Carolina Zoological Park (Asheboro)

**NORTH DAKOTA**  
Gardner Zoo (Bismarck)

**OHIO**  
Cleveland Metroparks Zoological Park  
Cincinnati Zoological Gardens  
Columbus Zoological Gardens  
Toledo Zoological Gardens

**OKLAHOMA**  
Oklahoma City Zoological Park  
Tulsa Zoological Park

**OREGON**  
Washington Park Zoo (Portland)

**PENNSYLVANIA**  
Erie Zoo  
Gettysburg Game Park (Gettysburg)  
Philadelphia Zoological Garden  
Pittsburgh Zoo  
Zoo (Carnegie Mellon University - Pittsburgh)

**SOUTH CAROLINA**  
Greenville Zoo  
Myrtle Beach Zoological Park (Columbia)

**TENNESSEE**  
Knoxville Zoological Park, Inc.  
Memphis Zoological Garden & Aquarium  
Caldwell Zoo (Tyler)  
Central Texas Zoo (Waco)  
Dallas Zoo  
El Paso Zoological Park  
Ellen Trout Zoo (Dallas)  
Glen Rose Zoo (Brownsville)  
San Antonio Zoological Garden & Aquarium

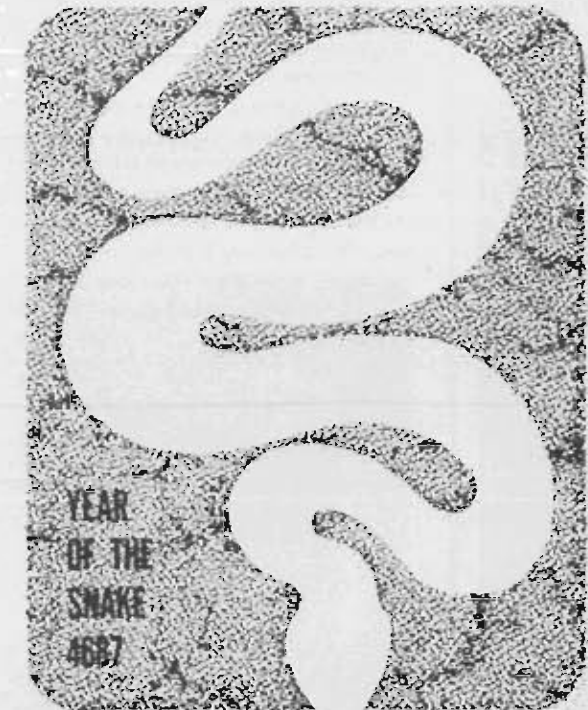
**UTAH**  
Hogle Zoological Garden (Salt Lake City)

**WASHINGTON**  
Woodland Park Zoological Gardens (Seattle)

**WISCONSIN**  
Henry Vilas Zoo (Madison)  
Milwaukee County Zoological Gardens  
Racine Zoological Gardens

**CANADA**  
Calgary Zoo (Botanical Gardens & Whitston Park)  
Jackson Zoological Garden - Ontario, Inc.  
Repke Wildlife Foundation

# Wok on the Wild Side



## Chinese NEW YEAR CELEBRATION AT THE ZOO

NAME \_\_\_\_\_

ADDRESS \_\_\_\_\_

Tickets at \$50 each

Total Enclosed

Make checks payable and send to: Zoological Society — WOK  
10001 W. Bluemound Rd.  
Milwaukee, WI 53226

FEBRUARY 4 1989

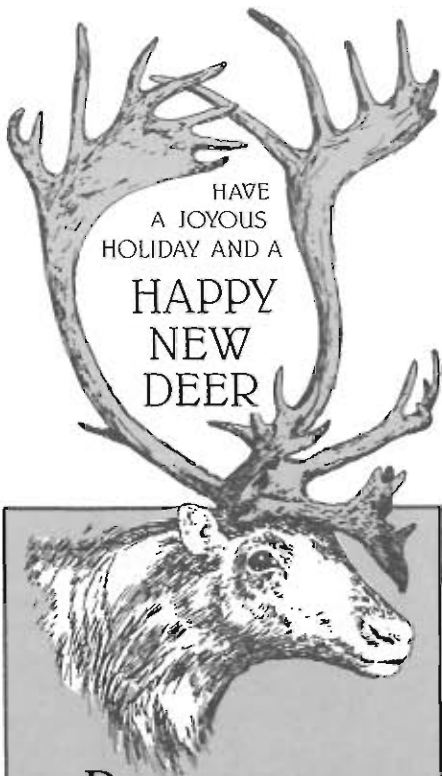
恭  
喜  
歡  
迎  
各  
位  
中  
外  
來  
賓

◆ Come celebrate the Chinese New Year at the Milwaukee County Zoo's new Peck Welcome Center.

◆ Indulge yourself with Oriental cuisine and entertainment featuring dragon and ribbon dancers.

◆ Win a trip to San Francisco and a behind-the-scenes tour of the San Francisco Zoo. You must be present to win. All proceeds from this celebration benefit the zoo's animals.





Prancer, one of Santa's eight reindeer, has just arrived at the Milwaukee County Zoo. Make her part of your holiday celebration—she'll look great under your tree or snugly tucked in a stocking.

This new reindeer is cheaper than 5 golden rings and less mess than 8 maids a milking.

Donate \$25 and receive a gift package unlike any other.

Each new adoptive parent is mailed the following goodies:

- A personalized certificate of adoption
- Species fact sheet
- A nameplate, displayed for a year on our "All In the Family" recognition board.
- Gift Card
- **Plus, a plush toy reindeer**

Best of all, your gift will assist the Zoo with animal exhibits.

If you "caribou," send the very best, call 258-2223 to order today.

## ZOO PRIDE

### Pop for the penguins

The Zoo Pride Volunteers are fundraising for the New King Penguin Exhibit which will be located in the renovated Aviary scheduled to open in 1990.

To help build a castle for the Kings, Zoo Pride is selling a special gourmet blend of popcorn for your enjoyment. The popcorn is grown and packaged in Wisconsin and would make the perfect gift for yourself or for someone special . . .

The popcorn is available in a 28-ounce jug which sells for \$2.25 or in a convenient microwave 5-pack box for \$4. Both varieties are a delicious way to help the Zoo Pride Volunteers reach their goal in giving the King Penguins a new home.

Please call the Zoo Pride office, 258-5667, to place your order so that you can Pop for the Penguins!



## ZOO PRIDE

### Something for everyone

Zoo Pride, the volunteer auxiliary of the Zoological Society, offers exciting opportunities for interested individuals. Imagine observing and documenting the surgical recovery of a rhinoceros, describing the rigors of the elephant training program, or explaining how snakes shed with actual animal artifacts.

Many benefits accompany membership in Zoo Pride: continuing education opportunities, lectures, field trips, workshops, tours, the ZOOing In newsletter, etc.

For additional membership information, please contact Zoo Pride, 258-5667.

### Happy haunting

The ghosts and ghouls are gearing up for the Halloween Spooktacular at the Zoo. Zoo Pride Volunteers are busily planning the Dungeon of Darkness with our sponsor, Milwaukee/NARI, Home Improvement Council, Inc. As the event draws near, we thank the Home Improvement Council for its continued support of the event and know the Dungeon will provide thrills and shrieks by the minute . . . for those who dare!

### Zooper parties

Plan your child's next birthday party at the Milwaukee County Zoo. Trained Zoo Pride volunteers conduct parties for children ages 5 years to preteens. Each party includes a personalized decorated cake, a beverage of your choice, a gift for each guest, plus a T-shirt for the guest of honor and a mini-tour of the Zoo.

Parties are offered every Saturday of the year with added weekdays during the summer months.

The price of the party includes admission with parking for children and chaperones.

Please call Zoo Pride at 258-5667 for booking dates or additional information.

Plan at least 10 to 12 weeks ahead of the special day.

### Take a walk on the wild side

Zoo Pride is pleased to provide VIP Behind-the-Scenes tours. These 2½-hour tours are for persons over the age of 12.

Rain or shine, sleet or snow, you walk in and around animal exhibits and zookeeper work areas in selected areas of the Zoo. Be prepared to walk up and down stairs, go into animal enclosures (unoccupied) and experience the sights, sounds and smells of a Zoo in operation. Be sure to bring your camera.

Reserved tours are conducted during regular Zoo hours. Tours can be adapted to accommodate the size of your group.

Phone the Zoo Pride office, 258-5667, for more VIP information and fees.

### Bring the Zoo to you

Bring the Milwaukee County Zoo to your organization or club meeting! Zoo Pride's Speaker's Bureau offers a 45-minute program highlighting a day at the Zoo complete with a Zoo Pride guide. For additional information, please contact the Zoo Pride office, 258-5667.

## PACK YOUR BAGS

### Kenya/Rwanda

Become part of the wild by joining Zoo Director, Dr. Gilbert Boese, and Executive Director of the Zoological Society of Milwaukee County, Lillian Boese, on a 20-day safari to Kenya and Rwanda.

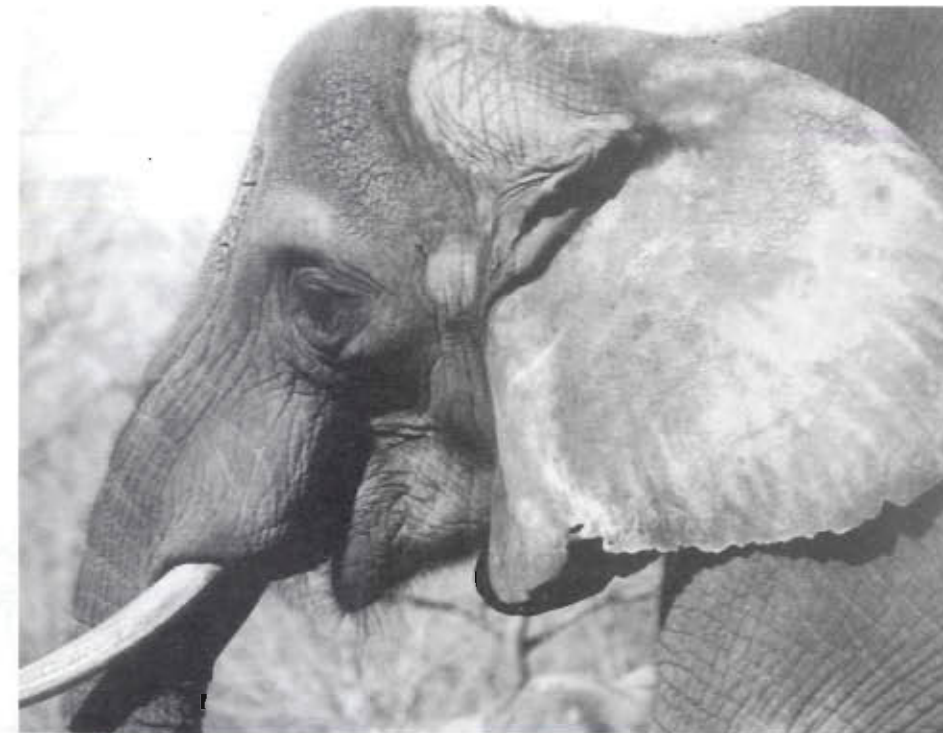
The first stop is Kenya's beautiful capitol city, Nairobi. At the Nairobi National Park, travellers can view lions, cheetahs, giraffes, zebras and herds of buffalo. Then it is time to jump in four-wheel drive jeeps and venture through the wonderful lands and forest areas of the Aberdare National Park. Enter the Shaba Game Reserve to gaze at the

great granite mountains and see Turkana tribesmen at the springs to water their camel herds. Leisurely explore Kenya's coastal resort, Mombasa.

It doesn't end there. Excitement continues at the Volcanoes National Park in Rwanda. This sanctuary for mountain gorillas encompasses terrain of steep slopes and bamboo forests of thick, highland jungles.

Departure is January 14, 1989 and return February 3, 1989. The cost is \$4,995.

For additional information, contact Susan Hauke, 258-2333.



### Kenya adventure

Looking for adventure? A summer trip to Kenya is the answer.

Encounter the Nairobi National Park. No where else is there a wildlife reserve with a great variety of animals so close to a major city. Venture 100 miles south to Amboseli National Park to see unusual mirages and the home of the lion, black rhino, elephant and cheetah. Continue to the "Millionaire's Paradise," Mt. Kenya Safari Club.

Enjoy a visit to the Samburu Game Reserve which is the gateway to the Northern Frontier of Kenya. Here, you will find the

reticulated giraffe and zebra. Experience non-stop game viewing from your window or an observation platform on The Ark, known as the "Ship in the Forest," at the Aberdare National Park. The journey continues at the Masai Mara Game Reserve to study behavioral patterns of the predators. Sleep overnight in thatched roofed tents along streams and natural pools which are favorite watering holes for the resident and migrant animals.

Departure is June 16, 1989 and return July 1, 1989.

For additional information, contact the Zoological Society, 258-2333.

## ZOOLOGICAL SOCIETY OF MILWAUKEE COUNTY

### Annual Business Meeting

Tuesday, October 11, 1988

Notice is hereby given that the business portion of the annual meeting of the Members will be held on Tuesday, October 13, 1988, convening at 4:00 p.m. with adjournment planned for 4:15 p.m.

The purpose of the Annual Business Meeting is presentation of summary financial reports and election of Directors. There will be no refreshments or program since this portion has been moved to our summer Annual Meeting.

Mr. John Hazelwood  
President

I hereby authorize John Hazelwood or Jack Recht (with full power of substitution) to vote in my place and stand as my proxy and authorize such proxy, during my absence, to vote in my name at any election and upon all matters that may properly come before the meeting of the members of the Zoological Society of Milwaukee County, October 11, 1988.

Signature \_\_\_\_\_

Date \_\_\_\_\_

Please return to:  
**Zoological Society**  
10001 W. Bluemound Road  
Milwaukee, WI 53226  
Attention: Secretary



### Workshops for the very young!

The Education Department is offering a new workshop for 3-year-old children accompanied by one adult. The cost of the workshop is \$6 for both participants (\$3 each) for society members; \$8 (\$4 each) for general public.

The children will be introduced to the world of wildlife through games, art projects, and hands-on activities with live animals — all within the classroom. The program will be one hour long.

A different concept will be presented each month. Parents register for only one session a month.

Program dates:

October 24-26

November 21-23

December 19-21

Send name, address, age of child, and number of children registering to:

Zoo Toddler Program

10001 W. Bluemound Rd.

Milwaukee, WI 53226

### Preschool packets

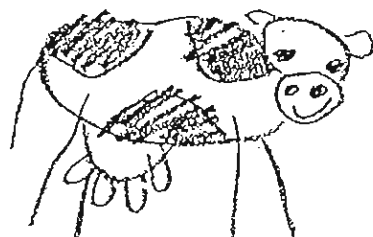
It's Here! The preschool family activity packet "You And Your Toddler at the Zoo" is now available for purchase through the Education Department. To receive more information about the packet, send your name and address to: Zoo Preschool Packet, 10001 W. Bluemound Rd., Milwaukee, WI 53226

### Workshops for preschoolers

Don't forget to register your children in the fall preschool education workshops. If your child attended the summer mini camp programs (for 4 & 5 year olds) you should have received the workshop registration forms in the mail. Call the Education Department for registration information at 256-5421.

### Reading is fun at the Zoo

Superintendent Herbert Grover has declared November as Read A-Loud Month. In honor of this occasion the Zoo and the Milwaukee Area Reading Council will host the Great Zoo Read About on November 19 and 20. The event will run from 10 a.m. to 3 p.m. each day. Call for additional information.



### Kids for kids cookbook

The Zoo and The Dairy Council of Wisconsin are sponsoring a cookbook contest in honor of the new Education Center and the Dairy Complex. Youth are encouraged to submit recipes for breakfast, lunch, supper, snack or beverage. Each recipe must include a dairy product. All youth submitting recipes will receive a copy of the cookbook.

A top prize and additional prizes will be awarded in each age category which include ages 7-9, 10-14 and 15-17 years. The contest ends November 1 so call 256-5421 for a contest registration form. Get involved in this exciting new project and have a healthy start to Fall and Winter.

### Are you a turkey?

Are you a leader of a youth organization such as scouts or 4-H. You may wish to bring your brownie, cub scout or mini-4H club to the Zoo's Turkey Day, November 19. Meet the Zoo's turkey and create a turkey to take home.

Program starting times are 9:30 a.m. and 11:30 a.m. The program is most appropriate for ages 6 to 9 years. All groups must be pre-registered. For registration call 256-5421. Each program lasts about an hour and a half.

### Zoo game makes great gift

Zoo Game is a perfect holiday gift. The game is designed for children ages 7-13 years. The game is set up for two to four players. Children learn about animals while having a great time!

The special holiday price is \$6 per game which includes mailing, or \$5 if you pick up the game at the education office. If you would like to order the game send check made payable to: Zoological Society of Milwaukee County, Zoo Game, 10001 W. Bluemound Rd., Milwaukee, WI 53226.

### Family workshop offered

Looking for something fun to do with your family during the holiday break? Participate in the Winter Animal Family Workshop. The workshops will be conducted December 28-31 at 10 a.m. and 1 p.m.

Cost of the two-hour session is \$5 per family (workshop fee does not include Zoo admission or parking). For registration form, call 256-5421. Each workshop is limited to 30 participants so call early to register.

### Get into the holiday gift giving spirit!

A family subscription of "Critter Chatter" would make a special gift for a grandchild or neighbor. Order a class subscription for your child's preschool — 40¢ per child — minimum of 10. This holiday season make some children happy by sending a subscription to a needy preschool or kindergarten class. A holiday card will be sent for each gift ordered. To order, call 256-5421. (See our ad on the opposite page)

### New phone number

The Education Department now has a direct phone number. The phone is staffed Monday through Friday, 8 a.m. to 4:30 p.m. For program information, call 256-5421.

## CALENDAR

October 21-23, 28-30

Dungeon of Darkness. The basement of the pachyderm building becomes a creepy, crawly adventure for those Halloween adventurers. It happens each evening, 6 p.m. to 9 p.m.

October 29-30

Halloween Spooktacular. A neat place to meet for a safe trick or treat is Milwaukee's favorite place — the Zoo! Bring the whole family, 9 a.m. to 4 p.m.

October 29

Costume Fun Run. Dress in costume and run in the 2nd annual Fuji Costume Fun Run. Following the run is a dance in the Peck Welcome Center.

November 12-13

Burger King's Behind-The-Scenes Weekend. Zoo visitors will get a look behind the scenes at the Zoo. Mark your calendars now.

November 27

A 5 kilometer walk, sponsored by the American Heart Association, takes supporters on a trek through the beautiful Zoo grounds.

December 3-4, 10-11

Lunch With Santa. Where else can children have lunch with Santa and pay a visit to Rudolph? See the registration form in this issue.

January 11-14

U.S. Snow Sculpting Competition. See artists create sculptures from blocks of snow. It's all happening at the Zoo.

January 22

Samson Stomp. The Zoo's famous gorilla, Samson, would appreciate your participation in this annual run, named in his memory. Get ready to stomp for the Zoo.

**CRITTER CHALLENGE**  
A score is like which one of these animals?  
White-tailed Deer  
Rhinoceros  
Count the number of...

**CRITTER CRAFT**  
Materials needed:  
-Three pieces of (9" X 12") construction paper  
-Scissors  
-Glue or stapler  
-Crayons (12 colors)  
-Two drawings and color  
-Two pieces of paper  
-Place together by side. Make sure the child's head.  
-the front of the  
-own those antlers!  
-activity, adults may  
-antlers.  
-Looking antlers of branches we may  
-A very much like  
-lers have a claw  
-and the points of

**Critter Chatter**  
Issue 2 1987-1988 Volume 5  
FOR KIDS 3-5 YEARS OLD

## Critter Chatter Leads the Way for Adventure and Fun!

This exciting newsletter for preschool children (3-5 years old) offers hours of fun-filled activities.

Your children will receive four issues of Critter Chatter during the school year. Each issue features a favorite zoo animal and provides information to capture your children's imagination and interest.

Stories, art activities, fingerplays, and puppet making are only a few of the activities that will delight your children and offer hours of fun for the entire family.

**COST** A family subscription (for up to three children) is only \$4.00. Each child will receive four issues of Critter Chatter.

**ORDER BY November 1, 1988**

Make checks payable to: Zoological Society of Milwaukee County

Parent's Name \_\_\_\_\_ Number of Copies \_\_\_\_\_

Child's Name \_\_\_\_\_ Amount of Check \_\_\_\_\_

Address \_\_\_\_\_ Zip Code \_\_\_\_\_

**Mail To: Zoo Education  
Zoological Society of Milwaukee County  
10001 W. Bluemound Road  
Milwaukee, WI 53226**



Zoological Society of Milwaukee County  
10001 West Bluemound Road  
Milwaukee, Wisconsin 53226

NON-PROFIT ORGANIZATION  
U.S. POSTAGE PAID  
PERMIT 4073  
MILWAUKEE, WISCONSIN 53226

Forwarding and address correction requested

