

# ALIVE

ZOOLOGICAL SOCIETY  
OF MILWAUKEE COUNTY  
FOUNDED 1906 / Summer 1986



# Baby elephant embodies Zoo future

By Tim Norris  
Freelance Writer

A new baby elephant from Burma brings to Milwaukee County a dramatic reason for supporting its Zoo: survival of a species.

The baby female will become one of fewer than a half dozen young female Asian elephants in all of North America when she arrives at the Zoo this summer. More than just a crowd-pleasing exhibit, she will be a breeding hope for a threatened race.

She will also bolster a solid tradition at the Milwaukee County Zoo of concern and care for elephants, evident in a staff with more than 50 years of accumulated experience with Indian elephants and in the Zoo's intensive elephant management program, now in its seventh year.

Thanks to support from M&I Banks, the Zoo is able to bring this elephant to Milwaukee.

The elephant's life began in a very suitable film drama: her mother worked in a Burmese lumber camp, and her father appeared from the wild for a brief romance and then returned.

Born November 24, 1984, the baby spent her infancy among the tree-hauling cows and tuskers in the Thabeikkyin lumber camp of Upper Burma, part of Tha Baik Kyin Township, Mandalay. She has lived most of the last year in the Rangoon Zoological Gardens, continuing a thoroughly civilized infancy.

An even more dramatic story belongs to her race: the Asian elephant (*Elephas maximus*). This one could be a tragedy, unless the actions of conservationists and zoo personnel around the world prove fruitful.

Like so many other branches (more than 600) of the elephant's once-verdant family tree, the Indian elephant faces extinction.

As with the woolly mammoth and the mastodon, the two most recent casualties, modern elephants are being herded more quickly offstage by *Homo sapiens*.

Ivory poaching has the reputation of a great killer of elephants, and it continues even with better law enforcement. Poachers are too clever and rangers too thinly spread to have much effect on what has been a prolific black market industry.

But even those considered "friends" of the elephant have done it damage.

In the baby elephant's native land, Burma, fewer than 5,000 elephants were counted in the wild as of 1984, and about 6,000 more lived in captivity. Those elephants granted the supposed shelter of civilization were working harder and dying younger than ever before.

Across the globe, the Asian elephant numbers only about 35,000, making it officially an endangered species. And life in a lumber camp is profit oriented. Owners rarely let elephants mate, because pregnancies last almost two years and because calves can't be trained for up to 15 years. They would rather continue to capture elephants from the wild.

Evidence of domesticated elephants goes back to the epoch of the most recent cave-dwellers. Anyone familiar with Hannibal (247-183 B.C.), the Carthaginian general who marched his elephants over the Alps, knows how long civilization has put Indian elephants to work. Rarely, though, have they been worked so hard.

For wild-born elephants, the path to the civilized world is traumatic: of 1,172 elephants taken from the Burmese jungle between 1972 and 1982, only 905 survived capture and training. Despite their thick hide and hardy appearance, elephants (in the words of Edmund Heller, former director of the old Washington Park Zoo in Milwaukee), are "as sensitive as a geranium."

They do fine in reasonably watered regions near the equator, and they still survive in Asia and Africa.

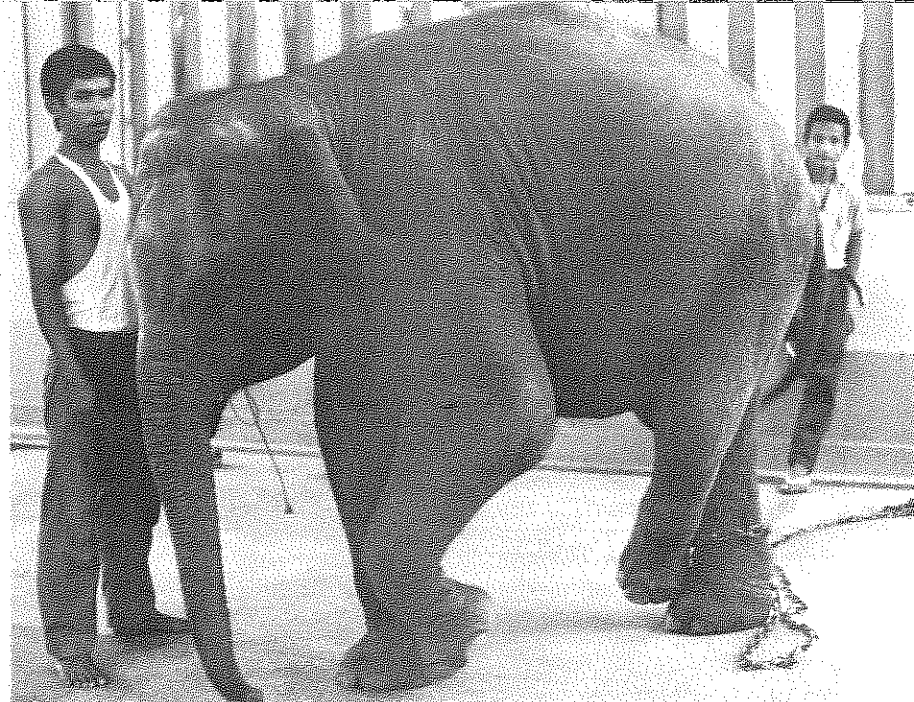
Even that wild "pool" is drying up, though, because humanity has seen fit to attack the literal root of the elephant's existence: habitat. Living in herds or families of 20 to 40 (or more), the world's largest land animal needs a lot of room. Hundreds of thousands of wild acres go under the bulldozer each year, reducing the elephant's range, forcing the elephant into reduced breeding and slow starvation.

The elephant purchase is part of the Milwaukee County Zoo's contribution to a worldwide effort at saving the Indian elephant.

Her arrival here will give new life to an overripe herd. Two of Milwaukee County Zoo's three female Asians ("Tamara" and "Lota") have passed reproductive age, and the third, "Annie," is scheduled to travel to Dickerson Park Zoo in Springfield, Missouri this summer to be bred. The Milwaukee County Zoo will receive any female offspring.

The baby would fit in well with the continent-wide elephant propagation program that inspired Annie's trip.

The Milwaukee County Zoo has a long and storied association with elephants, started with the arrival in August, 1907, of "Countess," bought with the proceeds of a Zoo benefit sponsored by the Knights of



The Zoo hopes to obtain this young female elephant late this summer. She was born in Burma, August 8, 1981.

Pythias the year before and by sales of "elephant buttons."

By 1913, Countess — her weight up from 1,585 pounds to 3,400 — was carrying backfals of children across the lawns of Washington Park. Her tonnage nearly doubled by 1923 and she outgrew her stall, and so was traded for a legend among Milwaukee elephants, "Venice."

Edmund Heller, then director of the Zoo, described Venice as "possessed of a perfect disposition." She had, he said, "never taken a dislike or made a hostile movement against any keeper or any of her public who test her cupidity and her temper by all sorts of edible and inedible trash." She used her elephant's incredibly sensitive smell to distinguish the edibles (vegetables, nuts, pastry, even chewing tobacco) from the rest.

Many of the dozens of elephants who followed, faced similar tests, and all of them passed.

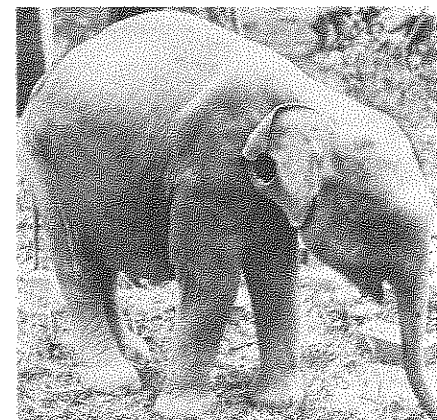
Thankfully, Milwaukee's new elephant won't face that gastronomic abuse, since visitors are not allowed to feed Milwaukee's elephants.

She won't be free of duties at the Zoo, of course, though her main duty — breeding — won't happen until she reaches maturity in almost 20 years.

Pretty soon (in elephant terms, this means within the next decade), she will learn the basic commands taught to all Zoo elephants: lifting her foot and trunk, saluting (a way for a keeper to guarantee an elephant's attention), stretching, sitting, lying down, grasping another elephant's tail with her trunk.

Meanwhile, she'll have her daily bath, her exercise and plenty of grain and hay . . . not to mention the attention and affection of her keepers. 🐘

The Milwaukee County Zoo negotiated many months to bring this Indian elephant to Milwaukee. In preparation of the long trip, we sent our staff veterinarian, Dr. Andrea Lenhard, to Rangoon, Burma, to first give the animal a complete physical and then to accompany her to the United States.



The female elephant the Zoo had hoped to purchase. As evidenced by the photo, she was not healthy enough to make the long trip from Burma to Wisconsin.

Lenhard found the elephant suffered severe malabsorption which resulted in delayed growth development. A large hole had been cut out of the elephant's ear because of infection.

It was the Zoo's decision that this small female was unable to make the strenuous journey in view of her unstable health.

The Milwaukee County Zoo continues to send funding for her medical attention and the Zoo is also negotiating for the purchase of another elephant.

Dr. Gilbert K. Boese  
Zoo Director

# New era begins with barn raising

By Laura Pedriani  
Assistant Public Relations Coordinator

A new era began at the Milwaukee County Zoo, April 17, 1986. One wall of an historic octagonal barn was raised to signify the official beginning of construction on the "first of its kind" Dairy Complex.

Approximately 100 representatives of state and local organizations sponsoring the \$1 million project attended the ceremony. Zoo Director, Dr. Gilbert K. Boese presented the sponsors with hand-made wooden mallets. Sponsors pounded pegs into the wall before the side was raised.

The octagonal barn, originally constructed in 1896, will house an Educational Center and will be connected to a Cow Barn and Dairy Store. The entire complex will be built on the grounds of the Children's Zoo.

Exhibits in the Cow Barn will serve to educate visitors about the environment and care of Wisconsin's dairy cows. Six types of dairy cows found in Wisconsin will be housed in the barn. Modern farming equipment currently used in Wisconsin, staff lectures and a computerized milking parlor will help visitors learn about Wisconsin's dairy cows and farms first hand.

An authentic octagonal barn will be the home of the Educational Center. Various exhibits will inform visitors about milk production, consumption of dairy products and nutrition. A plexiglass cow that will allow viewers to see the amazing process of milk production is one highlight of the Center. This "hands on" Education Center will utilize computers, films, living walls, video tapes and learning centers to teach visitors everything about the dairy industry, from milking to the nutritional value of dairy products.

Visitors will be able to purchase and sample dairy products in the Dairy Store. Milk, yogurt, ice cream and real Wisconsin cheese are just a few of the products that will be available. On selected days visitors

will be able to view the process of making cheese and ice cream.

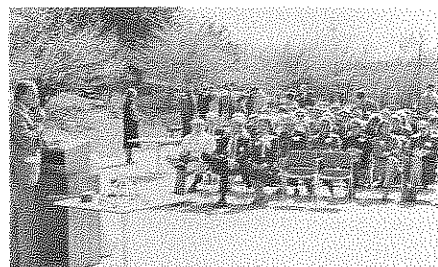
The Complex has been designed by Zoo and Zoological Society staff, with the help of experts such as architects, nutritionists, dairy experts and educational specialists. Scheduled to open in October, 1986, the Complex will be open year-round, to allow Zoo-goers to learn about their heritage every month of the year.

The Dairy Complex also marks the first stage of the Zoo's Master Plan. The "New New Zoo" will include a Welcome Center, Caribbean Cove, Walrus Exhibit and more. The Master Plan is scheduled to be completed in 1990.

A Complex saluting Wisconsin's fine dairy industry is just the beginning of the new era at the Milwaukee County Zoo. The Zoo is proud to celebrate the heritage of Wisconsin. 🐄



Construction officially began with the raising of the wall.



Zoo Director, Dr. Gilbert K. Boese, welcomed the Dairy Complex donors to the barn raising ceremony. Photos by Rich Bartz



Everyone got in the act before the wall was raised.

# Symphony returns for Zoo summer concerts

Strike up the band! The Milwaukee Symphony Orchestra returns to the Zoo in July for a "Star Spangled Summer."

SummerPops '86 marks the fifth exciting year of the Milwaukee County Zoo's association with the Symphony. This summer promises to be one of the best.

Celebrating America is near and dear to everyone's heart. Well, get out the sparklers, because the Symphony and the Zoo are doing just that... celebrating America. Salutes to the Statue of Liberty, the magic of the circus and the roaring 20's are planned.

A balloon release will kick off the festivities planned for "Salute the Great Lady," July 5 and 6. Works by Gershwin, Copland and Bernstein will be featured. A trip to New York will be raffled. The lucky winner will be able to salute the "Great Lady" in person.

Sousa and Stravinsky will be the artists of favor for "Under the Big Top." Enjoy some free popcorn on July 12 and 13. Guests include Ernest Borgnine and Shari Lewis. There couldn't be a better way to celebrate the return of the Circus Parade.

Join one of the greats, Saturday, July 19. Jose Feliciano will team up with the Symphony for a night of fantastic music.

Escape today and return to the 20's. It won't be hard on July 26 and 27 at the "Great Gatsby Party." Marvin Hamlisch will join the Symphony on July 26 and Lionel Hampton will add some jazz on July 27. Original cars of the 20's will be on display. Relive this era with a romantic dinner under the tent.

If your Saturdays and Sundays in July are already booked, don't worry. The Zoo will once again host the Symphony for three classical concerts. July 11, 18 and 25, various guest artists will perform with the orchestra. July 11, clarinetist Richard Stolzman will perform. Concert goes on July 18. Violinist Nadja Salerno-Sonnenberg will be in the spotlight on July 25.

When the Zoo and the Symphony team up for a month of music, it shouldn't be missed. Order your tickets for the SummerPops and classical concerts from Pat Bagnall of the Zoological Society at 258-2333. Members of the Zoological Society are eligible for a 20 percent discount off the admission price.

All concerts begin at 8:00 p.m. Programs are subject to change. For more information contact the Zoological Society at 258-2333.

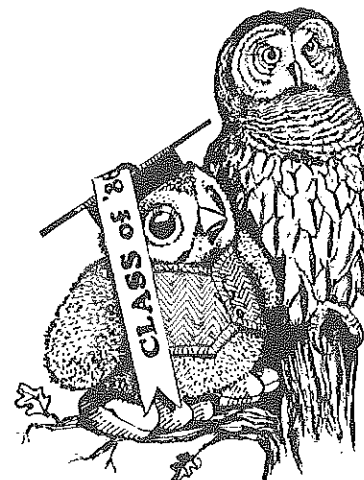
## ADMISSION PRICES

**SummerPops:** "Salute the Great Lady," "Under the Big Top," July 27 "Great Gatsby Party." Tent seating, \$13; lawn seating, \$8; lawn seating (children 12 and under), \$4.

**SummerPops:** "Jose Feliciano." Tent seating, \$14; lawn seating, \$8; lawn seating (children 12 and under), \$4.

**SummerPops:** July 26 "Great Gatsby Party." Tent seating, \$15; lawn seating, \$10; lawn seating (children 12 and under), \$5.

**Classical Concerts:** Tent seating (Milwaukee County residents), \$5; tent seating (non-residents), \$7; lawn seating, free.



## GIVE A HOOT — ADOPT AN OWL FOR GRADUATES

What better way to celebrate the new found wisdom of a graduate than adopting the wisest of them all in his or her name. Adopt an owl for your favorite graduate and a 6" toy owl\*, "smartly" dressed in a "sophisticated" tweed waistcoat, will be yours.

For a \$30 donation, you'll receive a personalized gift card, certificate of adoption with your graduate's name, an engraved

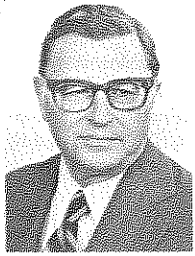
nameplate on the Zoo Parent's Board and an invitation to the Family Reunion slated for August. Give a gift of the wise owl as a symbol of your pride. It's a "smart" idea.

Call the Zoological Society of Milwaukee County Today!  
258-2223

\*While supply lasts.



## Society announces fund raising leadership



**I. Andrew  
Rader**



**Daniel F.  
McKeithan, Jr.**

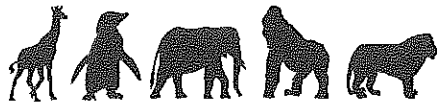
There is much excitement at the Zoo as the capital improvements master plan takes shape. A dream of the Milwaukee County Zoo is to have climate controlled weather independent exhibits.

"Our New, New Zoo" will provide dramatic and exciting new buildings linked together with indoor walkways creating a four-season attraction.

In order to create a Zoo for today and tomorrow, the Zoological Society is committed to raise \$12.5 million, the private portion necessary to implement the capital improvements master plan. Gifts from corporations, foundations and individuals will be challenged by Milwaukee County to meet the total cost of \$25 million.

Commitments received to date have been encouraging — more than \$5.3 million! This total includes \$1 million from the Peck Family Foundation, \$1 million from the Lynde and Harry Bradley Foundation and \$2 million from the Zoological Society.

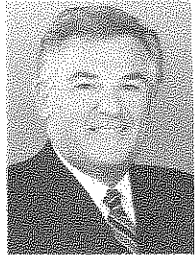
Gifts to "Our New, New Zoo" are a way to extend the magic, the knowledge and the wonder of the Milwaukee County Zoo to its visitors of all ages far into the 21st Century.



The Zoological Society of Milwaukee County is pleased to announce the leadership of the Capital Campaign — Our New, New Zoo. The Honorary Chair of the Campaign is I. Andrew Rader, President, Lynde and Harry Bradley Foundation.

The Endorsement Chairs are: Daniel F. McKeithan, Jr., President, Tamarack Petroleum Company; Bernard J. Peck, Executive Vice President, Peck Meat Packing Corporation; Mrs. Robert A. Uihlein, Director, Robert A. Uihlein Foundation.

The Co-Chairs of the Campaign are: Frederick L. Brengel, Chairman, Johnson Controls; Thomas I. Dolan, Chairman and Chief Executive Officer, A.O. Smith Corporation; Thomas J. McCollow, Chairman of the Board, The Journal Company; Charles S. McNeer, Chairman of the Board and Chief Executive Officer, Wisconsin Electric Power Co.; John A. Puelicher, Chairman of the Board and Chief Executive Officer, Marshall & Ilsley Corporation; Donald J. Schuenke, President, Northwestern Mutual Life Insurance Co.



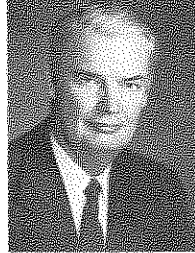
**Bernard J.  
Peck**



**Mrs. Robert A.  
Uihlein**



**Frederick L.  
Brengel**



**Charles S.  
McNeer**



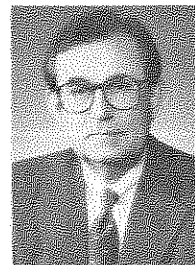
**Thomas I.  
Dolan**



**John A.  
Puelicher**



**Thomas J.  
McCollow**



**Donald J.  
Schuenke**

## THE ZOOLOGICAL SOCIETY OF MILWAUKEE COUNTY Thanks Its Following Loyal — Corporate & Patron Supporters

### 10,000 Platinum Corporate Platypus Members

American Express  
5,000 Gold Corporate Platypus Members  
Evan and Marion Helfaer Foundation  
MGIC Investment Corp.  
Marquette Electronics Foundation  
Northwestern Mutual Life Insurance Company  
2,500 Silver Corporate Platypus Members  
American Paper & Packaging Corporation  
Amoco Oil Company  
Central Control Alarm Corporation  
Ferro Marketing Inc.  
Georgia-Pacific Corporation  
Johnson Controls Foundation  
Marshall & Ilsley Bank  
The Milwaukee Journal/Milwaukee Sentinel  
Peck Meat Packing Company  
Rocky Rococo, Inc.  
Ruby Chevrolet/Ruby Oldsmobile  
A. O. Smith Foundation  
Sundance Photo, Inc.  
Time Insurance Company  
WITI-TV6  
WOKY/WML  
Wiscol, Inc.

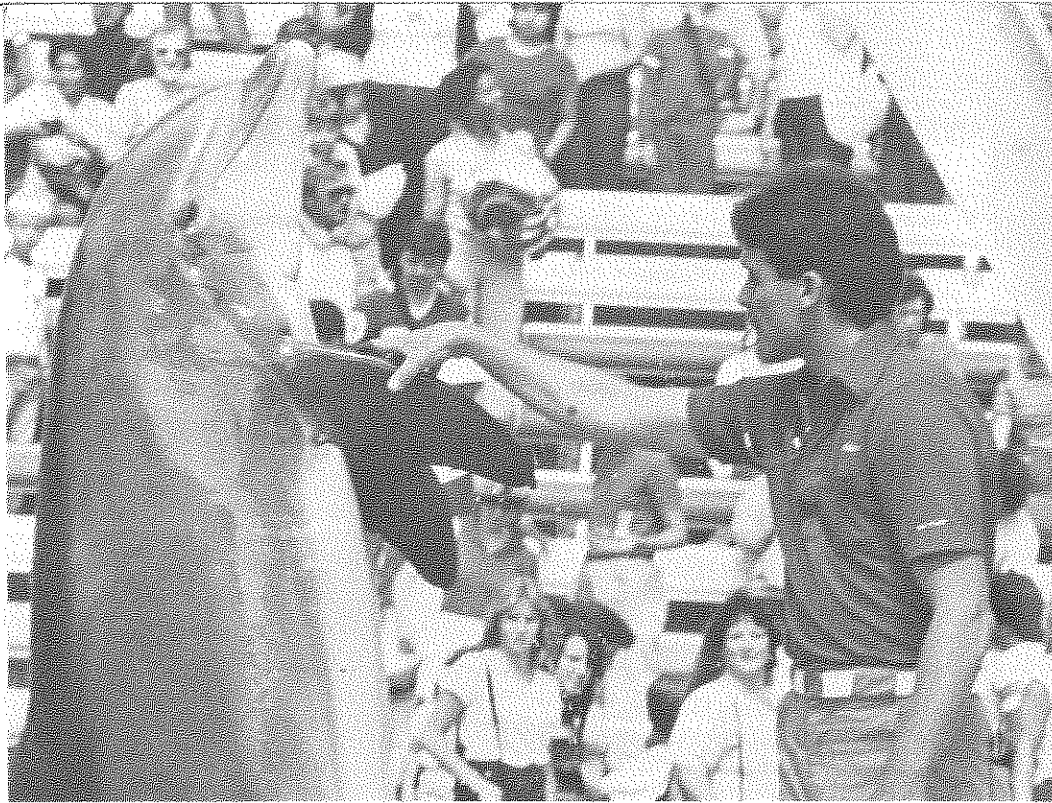
### 1,000 Corporate Platypus Members

Aladdin Label, Inc.  
Allis Chalmers Corporation  
Arlene's Economy Sign Shop  
Badger Meter Foundation  
Battery Shop, Inc.  
Bayshore Clinical Laboratories  
Benlo Chemicals, Inc.  
Blue Cross & Blue Shield  
The Lynde & Harry Bradley Foundation, Inc.  
Braeger Chevrolet, Inc.  
Consolidated Papers Foundation, Inc.  
The Gretchen & Andrew Dawes  
Endowment, Inc.  
Delzer Lithograph Company  
Eastman Kodak Company  
Eaton Corporation  
Edgewood Bank  
Electri-Wire Corporation  
Essentials Chemicals Corp.  
Falk Corporation  
Findley Adhesives, Inc.  
First Bank Foundation, Inc.  
First Wisconsin Foundation, Inc.  
The Fox Company, Inc., Lithographers  
Frankenberry, Laughlin & Constable  
Gimbels Midwest  
Grunau Company, Inc.  
Hastings-Doyle & Co., Inc.  
G. Heileman Brewing Co., Inc.  
Heinemann's Restaurants  
Hyatt Regency — Milwaukee  
IBM Corporation  
In-Place Machining Co.  
Intrepid Corp.  
Jacobus/Heritage Foundation, Inc.  
Kahler-Slater-Torphy-Engberg  
Klein Metal Finishing, Inc.  
Klement Sausage  
Charles A. Krause Foundation  
Krause Milling Co.  
Otto L. Kuehn Co.  
La Joy Restaurant Corp.  
Lakeside Oil Company  
Little Caesars Pizza  
The Marcus Corporation  
Marine Bank, N.A.  
Marketing Group Incorporated  
Megal Development Corporation  
Miller Brewing Company  
Miller Compressing Company  
The Milwaukee Brush Mfg. Co.  
Milwaukee Electric Tool Corp.  
Milwaukee Northside Warehouse, Inc.  
Moebius Printing Company  
Monarch Corporation  
Mueller Food Service  
National Business Furniture  
William W. O'Brien, Inc.  
Olsten Temporary Services  
Orion Corporation  
PH Orth Co.  
Pabst Brewing Company  
Pepsi-Cola Bottling Company  
The Perlick Company, Inc.  
Peterbilt of Wisconsin, Inc.

Quad/Graphics, Inc.  
Reinhart, Boerner, Van Deuren,  
Norris & Rieselbach, S.C.  
Reliable Knitting Works  
Remus Catering Service  
Rexnord Foundation  
Robertson-Ryan and Associates  
M. M. Schranz Roofing, Inc.  
Silverbird Lanes/Silverbowl Corp.  
Stackner Family Foundation  
Sta-Rite Industries, Inc.  
Stein Garden Centers, Inc.  
Sterling, Inc.  
Tamarack Petroleum Co., Inc.  
Tombstone Pizza Corporation  
Trade Press Publishing Company  
Uihlein Electric Co., Inc.  
Universal Foods Corporation  
Usinger Famous Sausage  
Valuation Research Corporation  
Kurt Van Engel Commission Co., Inc.  
The Video Station  
Vilter Foundation, Inc.  
WISN-TV  
R&B Wagner, Inc.  
Wisconsin Bell, Inc.  
Wisconsin Electric Power Company  
Wisconsin Gas Company  
Wisconsin Packing Company  
Wisconsin Public Service Corp.  
Arthur Young  
The Ziegler Foundation  
**Professional Associates**  
Dr. Robert J. Flemma  
James D. Friedman  
Dr. Leander R. Jennings  
Dr. Michael C. Kubly  
Diane O'Connor  
Podell, Miller & Associates, Inc.  
**2,500 Silver Patron Platypus Members**

Eugene G. Martin  
**Patron Members**  
Howard E. Alcorn  
Thekla P. Brumder  
Waller & Rosalie Carson, Jr.  
Christin Cleaver  
Mrs. Colet Coughlin  
Fred Creamer  
Ross H. Dean  
Larry Ehlers  
David S. Epstein  
Thomas B. Fifield  
Carl O. Friend  
G. L. Gosewehr  
Martin J. Greenberg  
John Hazelwood  
Dr. David C. Hemmy  
Klaus Heuppe  
Madeline J. Howard  
R. Robert Howard  
Reinhold & Beverly Hugo  
Alice Bertschy Kadish  
Eugene F. & Gwendolyn Lavin  
Mrs. David K. Lindsay  
Jane E. Martin  
Quinn W. Martin  
D. F. McKeithan, Jr.  
John Oster, Jr.  
Dorothy Ross Pain  
Joan M. Pick  
Sidney Plotkin  
Jack Recht  
A. D. Robertson  
Barry S. Sattell  
Gertrude Elser Schroeder  
Gene E. Soldatos  
Martin F. & Barbara Stein  
Willis G. Sullivan  
John Taylor  
Miles Theurich  
Nancie Dauer Uihlein  
Mrs. Robert Uihlein  
Allen W. Williams, Jr.  
Bernard C. Ziegler, II

You have enabled us to continue the excellence established at the Milwaukee County Zoo in the areas of education, recreation, exhibition and conservation.  
On behalf of Wisconsin's #1 Tourist Attraction —  
THANK YOU!



"Give me five," says Jimbo in one of his previous appearances. Milwaukee's program will emphasize the dolphins astounding water adaptations.

## Zoo flips over dolphins

"Let's go surfin' now, everybody's learning how, come on safari with me." Sound like a hit song by the Beach Boys? It could become the theme song for the 1986 summer at the Milwaukee County Zoo.

On June 15, the Zoo will premiere with its own Surfin' Safari, a dolphin and sea lion presentation. Two Atlantic Bottle Nose dolphins and one California sea lion will not only delight Zoo visitors with their water antics, but act as aquatic ambassadors.

The half hour presentation will focus on the natural history of dolphins and sea lions. The mammals will demonstrate their natural and learned behaviors.

The Zoo is proud to become the summer home of Jimbo, a 26-year-old male dolphin, and Jill, a 22-year-old female dolphin. A male California sea lion will also participate in the program. The animals will return to Florida in late October.

The Zoo is presently building a dolphin theater across from Monkey Island. The theater will seat 1,800 people. There will be five shows a day (11 a.m., noon, 1 p.m., 2 p.m., 3 p.m.), seven days a week. Tickets (50 cents per person) can be purchased starting at 9 a.m. each day at the ticket booth located just outside the theater.

The dolphin pool is kidney shaped, approximately 32 feet wide by 75 feet long with an average depth of 13 feet.

This is the first time the Zoo has exhibited salt water dolphins. The Aquarium/Reptile building had fresh water dolphins on exhibit through 1977.

The two dolphins and sea lion are sure to bring added excitement to the Zoo's 1986 summer. Let's all go surfin'.

## Date change for Picnic/Premieres

The date of the Annual Picnic, originally slated for June 19, has been changed to **Wednesday, June 11 and Thursday, June 12.**

The date of the members-only Dolphin Premiere has also been changed from May 21 and 22 to the same evenings as the Annual Picnic.

Construction on the dolphin theater was delayed this Spring so the premiere also had to be delayed. It seemed wise to combine the two events and add an extra evening in hopes that all members will be able to see the new dolphin theater and the dolphins.

Please check your invitation for your picnic date.

We apologize for the change in schedule. Hope to see you at the picnic.

# FAMILY FUN RUN

## African Black Footed DECATALON

Join Emmer and walk or run to help benefit the Zoo with the purchase of two African Black Footed Cats. (*Felis Nigriles*—the smallest cat in the world [35 ounces] with the biggest roar per ounce.)

DATE: Saturday, June 7, 1986

PLACE: The Milwaukee County Zoo

EVENTS: 5 Mile Run or 2 Mile Fun Run/Walk

TIMES: 5:45 p.m. 2 Mile Run/Walk; 6 p.m. 5 Mile Run

DIVISIONS: Men: 0-13, 14-17, 18-24, 25-29, 30-34, 35-39, 40-44, 45-49, 50-54, 55-59, 60-69, 70+

Women: 0-13, 14-17, 18-24, 25-29, 30-34, 35-39, 40-44, 45-49, 50-59, 60+

(Awards will be given in each category of the 5 mile race and the first three overall finishers in both the 5 and 2 mile runs.)

AWARDS PRESENTATION: 7:30-8 p.m.

ENTRY FEE: \$8 Runner, pre-registration (non-refundable); \$10 Runner, race day registration (non-refundable)

ENTRY FEE INCLUDES: T-Shirt, Race day packet with route map, admission and parking fee for runner, Zoo discount for non-runners, entertainment, Emmer Lean 'N' Tender® sandwiches, Coupon for Emmer Lean 'N' Tender® store purchase.

REGISTRATION: mailed entries must contain FULL FEES and be received by May 30, 1986. A RACE CONFIRMATION CARD will be sent to all mailed entries. After May 30th, all runners should register in person at the Zoo. Runners may also register on race day from 4 p.m. to 5:30 p.m.

RACE DAY PACKETS should be picked up on race day by showing the RACE CONFIRMATION CARD from 3:30 p.m. to 5:15 p.m.



Clip and Mail with Entry Fee

EMMER FAMILY FUN RUN Saturday, June 7, 1986—5:45 PM and 6:00 PM

NAME (LAST NAME FIRST)

\_\_\_\_\_

ADDRESS

\_\_\_\_\_

CITY

\_\_\_\_\_

STATE

\_\_\_\_\_

ZIP

\_\_\_\_\_

Area Code

\_\_\_\_\_

Telephone Number

\_\_\_\_\_

SEX

Male

Female

AGE

\_\_\_\_\_

\_\_\_\_\_

RELEASE OF ALL CLAIMS:

To be signed by each participant (or parent/guardian if under 18).

I hereby release The Milwaukee County Zoo, Emmer Brands Incorporated, The Badgerland Striders, all sponsors, officials and volunteers involved in this race from any liability incurred or in any way related to my participation in the 1986 DeCatalon.

Signed \_\_\_\_\_

Date \_\_\_\_\_

Distance

2 mile

5 mile

Shirt Size

Small

Med.

Large

Ex. Large

BADGERLAND STRIDER?

Yes

No

Total fee enclosed \$ \_\_\_\_\_

(Entry Fee \$8\*

(non-refundable)

\$10\* race day

(non-refundable)

\*Each entry must submit all information or registration is not complete.

MAKE CHECKS PAYABLE TO AND MAIL TO:

DeCatalon/Milwaukee County Zoo  
10001 W. Bluemound Rd.  
Milwaukee, WI 53226

# Zoo hospital receives facelift

By Cyd Mayer  
Hospital Manager

The major medical procedure this winter has been to orchestrate and complete the Zoo hospital renovation. The project has been one of the longest, most skilled procedures ever taken on by the medical staff. The idea behind the operation was to give the hospital a facelift making it more functional.

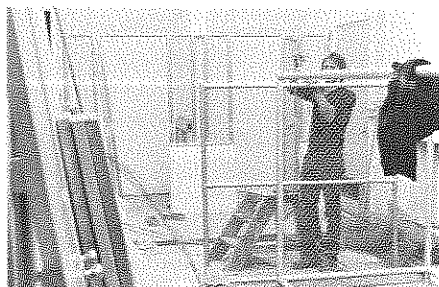
Most Zoo visitors don't realize a Zoo hospital exists because it is located in the Zoo's behind-the-scenes area. The hospital is situated on the south side of I-94 with access to the Zoo grounds by a road under the interstate.

The Zoo hospital is staffed by two veterinarians, a veterinary/medical technologist who also serves as the hospital manager, one zookeeper and a medical secretary. There is also a support staff of consultants, including a veterinary pathologist, reproductive physiologist, dentist and technician intern. Since six years ago the Zoo had no full time permanent veterinary staff, the growth in staff necessitated an update in the hospital facility.

The first area of concern was office space. With the advent of a complete medical record system, there became a necessity for space. Offices were added for the veterinarians, the keepers and the medical secretary. Prior to the renovation all of the medical records, as well as the medical library, were in a different building of the Zoo. This was absolutely impractical during any medical procedure, especially emergencies.

Another area of change was the procedure rooms. The surgery room and the laboratory were both enlarged by turning several small rooms into two large ones. Since there are many procedures which often involve not only our staff but many consultants, the small surgery room often became a stumbling ground.

Perhaps more than increased space is the addition of the new countertops and much needed shelving. The new cabinets, countertops and overall paint job in all of the rooms helped with the facelift as much as anything.



An added quarantine area makes this room extremely useful.

One of the animal ward areas was converted to an intensive care unit. This room will now be a space for incubators, oxygen administration and simply an area where animals in an intensive situation can be treated more effectively.

Another of the animal areas was converted to an isolation ward by walling it completely off from the other areas. This area will be used for any contagious or suspected contagious diseased animals. Since every animal which enters the Milwaukee County Zoo from somewhere else is placed under quarantine, this isolation area will be put to good use.

We lost some of the pre-existing animal holding areas so it was necessary to build new ones. This was done by making better use of the existing space. The most significant change was the addition of a large squeeze cage designed for small hoofstock. Until this point, the hospital had no good facility for quarantining hoofstock. The new area is designed so that an animal can be walked right off a truck or trailer and right into the cage. The walls of the cage literally squeeze together restricting the movement of the animal and enabling the veterinarian to treat the animal without danger to himself or the animal.

The consulting pathologist does necropsies or autopsies on all of the animals that die on Zoo grounds. Though the medical staff works to save every life, this is not a reality. With every death comes a reason and the pathologist tries to discover what it is so that each case is a learning experience. To better help her in her job, a new necropsy table with more space was added to the necropsy room.

Perhaps the most welcome change of all is the addition of more storage areas. As the staff size increased and medical procedures evolved, the hospital became the center for more medical equipment. Storage was a problem. Open areas were walled off and homes were made for the equipment and supplies.

The changes in the hospital are welcome ones. The transition between old and new was not an easy one. Where did the staff work? The animal cages which were not changed and which were far enough away from wall demolition became our surgery room, laboratory and offices. Though it may not seem ideal, it proved to be very functional and the schedule at the hospital slowed only a little.

The Zoo hospital staff continues its many health maintenance and research procedures in keeping all 5,000 residents at 10001 W. Bluemound Rd. happy and healthy. The renovated hospital makes their job easier and more efficient. 🐾



This Chevrotain arrived at the Zoo in February. It is enjoying its new home in the Small Mammal Building.

## New animals added to Zoo collection

The Children's Zoo is bustling this time of year. We have had nearly 30 goats born in the last several months.

Two cotton top marmosets were born at the Aquarium/Reptile building in February. One of the babies has been rejected by its parents and has been taken to the hospital to be raised, while a spotted gecko and a boa constrictor joined the building's population. Two green crested lizards also arrived as a donation from the Brookfield Zoo.

The Small Mammal population, meanwhile, grew by two in February. We received, on breeding loan, two Malay Chevrotains, which are very small, hoofed relatives of the deer.

The Aviary received a turkey vulture from Bambi Wildlife Sanctuary in Florida and six cattle egrets (Buff-backed Heron) from the Fort Wayne, Indiana Children's Zoo. The most exciting news in the bird collection comes from the Humboldt penguins: a female has laid eggs. We are eagerly awaiting the hatching. The griffon and cinereous vultures have also laid eggs, but without any success in hatching.

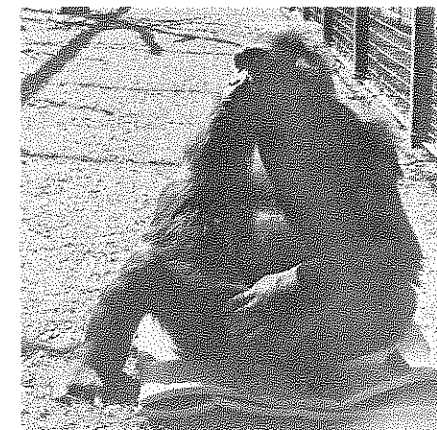
Other new additions to the Zoo include two straw-colored fruit bats, a bantam



Striped Hyenas don't always laugh, but they look happy none-the-less. Photos by Pete Feldner.

chicken for the Children's Zoo and a Japanese macaque born on Monkey Island.

The ice has receded, but not in time to prevent the sad death of our male moose, "Tundra," whose injuries were probably due to a fall on the frozen pond.



Femelle, a female gorilla from the National Zoo, enjoys sunning herself in the Great Ape Escape.

## Zoo calendar premieres June 1

On Sunday, June 1, Little Caesars Day at the Milwaukee County Zoo, the 1986-87 Zoo Calendar will premiere at the Zoo. The calendar, September 1, 1986 to December 31, 1987, is a 16-month calendar, featuring beautiful photos of the Milwaukee County Zoo inhabitants. The calendar will be sold at the Milwaukee County Zoo and at all 16 Little Caesars Pizza Milwaukee locations for \$4.00.

As a special benefit of membership in the Zoological Society, you can purchase your calendars for just \$3.00, a \$1.00 reduction available only at the Milwaukee County Zoo.

# Zoo summer filled with special events

By Mary Beth Carr  
Special Events Coordinator

"It All Adds Up to Love" — The 1986 Pet Week Slogan will be the phrase of the day as the Milwaukee County Zoo, Community Veterinary Clinics, WOKY and WMIL radio stations team up on May 10 to celebrate National Pet Week. Listen to the stations for details on the "Most Talented Pet Contest." Booths with information about home pet care, grooming, veterinary care and pet products will be located throughout the Zoo. Pick up a scavenger hunt at the information booth and learn what Zoo

## The Zoological Society of Milwaukee County

### Directors:

John B. Burns  
William M. Chester, Jr.  
Patricia B. Dalton  
Stephen Dearholt  
Sue Dragisic  
Robert Elliott  
Dennis W. Frankenberry  
John A. Hazelwood  
Robin Higgins  
Dr. Leander R. Jennings  
Robert A. Kahlor  
James H. Kuehn  
Thomas C. Lathrop  
D. F. McKeithan, Jr.  
Sandi Moomey  
Bernard Peck  
Anthony J. Petullo  
Jack Recht  
Jay H. Robertson  
Michael Schmitz  
Gene E. Soldatos  
Richard A. Steinman  
John W. Taylor  
Mrs. Robert A. Uihlein  
Joan Urdan  
Allen W. Williams, Jr.  
Carol Wythes  
Bernard Ziegler III

### Honorary Directors:

Thomas B. Fifield  
Robert T. Foote  
Richard A. Gallun  
Richard D. Gebhardt  
Edward O. Gerhardt  
Edward A. Grede  
James F. Kieckhefer  
George D. La Budde  
William A. Lohse  
Ann McNeer  
Howard E. Moebius  
Bill G. Moomey  
Thomas S. O'Byrne  
Philip W. Orth, Jr.  
Frederick L. Ott  
Dorothy Pain  
William R. Pollock, Jr.  
Kurt W. Remus, Jr.  
A. D. Robertson  
George Speidel  
Willis G. Sullivan  
James A. Taylor  
William C. Wright

animals your pets are related to. Participants will leave with an appreciation of the function of the Zoo as well as the value of proper health care for their house pets.

Mother's Day has always been a popular day for a Zoo visit. On Sunday, May 11, we are celebrating McMOTHER'S DAY — sponsored by McDonalds, WLUM radio and Coca-Cola. Tray liners at all South-eastern Area McDonalds locations include a free Zoo admission coupon for mom and an entry form for the WLUM drawing. The grand prize is a trip for two to Las Vegas, other prizes include a limo ride to McDonalds and the Zoo for mom and her family on McMother's Day.

Milwaukee County Council #629 Boy Scouts of America will host its annual Scout Show at the Zoo on Saturday, May 31. The 1986 Scout Show at the Zoo will be a gathering of Cub Scouts, Varsity Scouts, Explorers plus their parents and friends. Visit the Zoo on Saturday, May 31 and see all of the marvelous things scouting has to offer. Tickets for this event can be purchased in advance from participating scout groups.

For those of you who liked the Samson Stomp, you'll love the African Black Footed DeCATalon. This 5 Mile Run and 2 Mile Run/Walk is sponsored by Emmer Brands. All proceeds will go to purchase two African Black Footed cats for the Small Mammal Building. (See registration form on page 9.)

From June 21 to July 13 — the date of the Great Circus Parade — the Siemor Bros. Miniature Circus will be on display in the Zoo Restaurant. This 18'x38' display is a 1/2" scale authentic circus. It is complete with 30 railroad cars, big top tent, side show, dressing tent, wardrobe tent, two horse tents, blacksmith shop, dining tent and cook house. Every wagon or piece of equipment is a scale model of a prototype that was part of a real circus. It took Melvin and Lottie Romeis of West Allis, Wisconsin twenty years (40,000 hours) to build the circus.

"The Eyes Have It" on Saturday and Sunday, July 19 and 20, when the National Society to Prevent Blindness and the Milwaukee County Zoo offer free vision screening to preschool children. In addition to the vision screening, children can match skills with their favorite Zoo animals at various areas throughout the park.

August 15, 16 and 17 join us for a weekend of food and fun at The Sentinel's Milwaukee A La Carte. Sample the delectable specialties of some of Milwaukee's finest restaurants. (Visit Milwaukee's biggest celebrities: Chandar, the tiger, Tanga, the gorilla.) Swing and sway to top name entertainment on three stages. Special A La Carte hours, 9 a.m.-10 p.m. each day.

# TRAVEL

## Polar bear lovers unite

Polar bear lovers unite for the Polar Bear Expedition. Adventurers will depart October 19, 1986 for Winnipeg and Churchill, Canada.

Seeing polar bears at the Zoo is great, but seeing polar bears in their natural habitat is spectacular. In the world renowned "Polar Bear Capital of the World" your chance of spotting a polar bear is 100 percent.

Polar bears aren't the only attractions. A trip to Hudson Bay and a tour of the Eskimo Museum are just a few of the side trips offered on this exciting and unusual adventure.

This eight-day expedition will be a fascinating experience for \$1,595. Contact the Zoological Society at 258-2333 for additional information.

## Paradise of a different sort: Australia

Spend 16 days in a paradise of a different sort . . . Australia. The Zoological Society of Milwaukee County offers an exciting chance to venture down under. Travelers will depart August 21, from San Francisco, California.

The "Island Continent" gives naturalists a chance to view flora and fauna found no-

where else in the world. Home to 240 species of mammals and 720 species of birds, Australia has something to offer even the most knowledgeable animal lover.

Two days in Sidney, two days on the Great Barrier Reef and visits to the tropical rain forest of Atherton and Lamington National Park are included in this Australian experience.

The Australian trip is available for \$2,895. An optional eight-day extension to the north and south island of New Zealand can be added for an additional \$895.

## Let your spirit of adventure fly

The spirit of adventure is in everyone. On October 31, 1986, join Zoo Director, Dr. Gilbert K. Boese on a fascinating safari to Zimbabwe, Africa.

Highlights such as Victoria Falls, the greatest falls in the world and Hwange National Park, Zimbabwe's largest national park, will make this trip 18 days you will never forget.

Travel by boat, canoe, landrover, light aircraft and foot through the romance of Zimbabwe bush. Don't miss this chance to delight in Zimbabwe's magnificent scenery, exotic wildlife and extraordinary people.

The adventure is there, take the chance and fly. The cost of this trip is \$3,785.

## Matching funds help Zoo growth

The Zoological Society of Milwaukee County thanks the following Wisconsin Corporations who offer a Matching Funds Program to their employees:

AT&T  
American Brands, Inc.  
American Can Company  
American Motors Corporation  
American Standard, Inc.  
Ameritech Publishing, Inc.  
Armco, Inc.  
Geo. Banta Co., Inc.  
Bemis Company, Inc.  
Bucyrus-Erie Company  
Carson Pirie Scott Foundation  
The Coca-Cola Company  
Community Shares, Ltd.  
Consolidated Papers, Inc.  
The Continental Group, Inc.  
Cray Research, Inc.  
Dart & Kraft, Inc.  
Eaton Corporation  
Exxon Corporation  
First Bank — Milwaukee  
General Electric Company  
General Foods Corporation  
Great Northern Nekoosa Corporation

Hammermill Paper Company  
IBM  
James River Corporation  
S. C. Johnson & Son, Inc.  
Johnson Controls Foundation  
Kearney & Trecker  
Kimberly-Clark Corporation  
KMart Corporation  
McQuay, Inc.  
Northern States Power Company  
Philip Morris Incorporated  
Rexnord, Inc.  
Tenneco, Inc.  
United Parcel Service  
Wisconsin Bell, Inc.

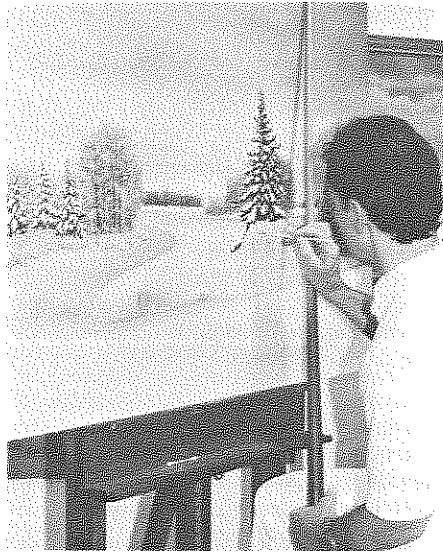
A Corporate Matching Funds Program helps maintain the outstanding excellence seen at your Zoo. If you are an employee of any of the above corporations join the Zoological Society, as a family or patron member, and your company will match your donation. Look upon this as a great way to double your generosity to your Zoo. You and your family can enjoy year-round educational and recreational opportunities at one of the nation's finest zoos.

## Artist to donate painting to Zoo Ball

Robert Pence, a well known Wisconsin artist, is committing a Winter Sunset on Lake Evinrude to canvas to donate to this year's Zoo Ball. Pence chose the winter scene to coincide with the theme of this year's Ball, A POLAR EXPEDITION. The original oil painting, valued at \$10,000, will be featured in the Voice Auction at the Ball on June 28. The monies raised by the Ball will be used to renovate the Polar Bear Exhibit to allow the Zoo visitor to view the polar bears as they swim underwater.

This painting will be the first in a series of four Zoo scenes that Pence will create yearly for the annual Zoo Ball. Each of the remaining paintings will depict a different scene in the Zoo during a different season.

Robert Pence is well known for his masterful paintings of Wisconsin landscape. With his painting of Lake Evinrude, Pence has captured the "north woods" beauty of the Milwaukee County Zoo. The softness and detail in the work are typical of the artist's style, but it is the emotion in it that makes it a Pence.



*Robert Pence, a Wisconsin Artist, puts the finishing touches on a painting of a winter sunset on the Zoo's Lake Evinrude. The painting is the first of four that Pence will donate to the Zoo.*

## Membership offers benefits

Membership in the Zoological Society of Milwaukee County provides many benefits. Take a look at what you receive by joining the wildest club in town!

- **FREE ADMISSION** to the Zoo for your family (husband, wife and their minor children) or Individual (person named on Membership Card only). Parking additional.
- **10% DISCOUNT** at all of our Zoo gift shops.
- **"NIGHT IN JUNE"** picnic for our members and their families.
- **ANNUAL PROGRAM** in July for our members and their families with famous guest speakers like Jacques Cousteau, Joan Embry and Marlin Perkins.
- **SAFARI INVITATION**—join an international safari organized exclusively for members and led by Milwaukee County Zoo Director, Dr. Gilbert Boese.
- **ALIVE** — a one-year subscription to our fun and educational publication.

In addition, members receive free admission with their Zoological Society Membership Card (except where noted) to the zoos and aquariums listed below:

**ALABAMA**  
Birmingham Zoo  
Montgomery Zoo

**ARIZONA**  
Reid Park Zoo, Tucson

**ARKANSAS**  
Little Rock Zoo

**CALIFORNIA**  
Knowland Park Zoo, Oakland\*  
Los Angeles Zoo  
San Francisco Zoo  
Santa Barbara Zoo  
Santa Ana Zoo  
Sequoia Park Zoo Society, Eureka  
Roeding Park Zoo, Fresno

**CONNECTICUT**  
Beardsley Zoo, Bridgeport

**FLORIDA**  
Jacksonville Zoo  
Dreher Zoo, West Palm Beach  
Markham Park Zoo, Ft. Lauderdale  
Miami Metrozoo, Miami  
Central Florida Zoo, Lake Monroe

**GEORGIA**  
Atlanta Zoo

**ILLINOIS**  
Glen Oak Zoo, Peoria  
John G. Shedd Aquarium, Chicago  
Miller Park Zoo, Bloomington  
Henson Robinson Zoo, Springfield

**INDIANA**  
Fort Wayne Children's Zoo  
Indianapolis Zoo  
Mesker Park Zoo, Evansville  
Potawatomi Zoo, South Bend

**KANSAS**  
Sedgwick County Zoo, Wichita  
Topeka Zoo  
Sunset Zoological Park, Manhattan  
Lee Richardson Zoo, Garden City  
Brit Spaugh Zoo, Great Bend

**KENTUCKY**  
Louisville Zoo

**LOUISIANA**  
Audubon Park & Zoo, New Orleans  
Greater Baton Rouge Zoo, Baker  
Louisiana Purchase Gardens & Zoo, Monroe

**MARYLAND**  
Baltimore Zoo

**MICHIGAN**  
Binder Park Zoo, Battle Creek  
John Ball Zoo, Grand Rapids  
Detroit Zoo, Detroit

**MINNESOTA**  
Minnesota Zoological Garden, Apple Valley  
Duluth Zoological Garden

**MISSISSIPPI**  
Jackson Zoo

**MISSOURI**  
Dickerson Park Zoo, Springfield  
Kansas City Zoo

**NEBRASKA**  
Folsom Children's Zoo, Lincoln  
Henry Doorly Zoo, Omaha

**NEW JERSEY**

Turtle Back Zoo, West Orange  
Cohanzyck Zoo, Bridgetown

**NEW MEXICO**  
Rio Grande Zoo, Albuquerque

**NEW YORK**

Buffalo Zoo  
Burnet Park Zoo, Liverpool  
Ross Park Zoo, Binghamton  
Seneca Park Zoo, Rochester  
Staten Island Zoo  
Utica Zoo

**NORTH CAROLINA**

North Carolina Zoological Park, Asheboro

**NORTH DAKOTA**

Dakota Zoo, Bismarck

**OHIO**

Akron Zoo  
Cleveland Zoo  
Columbus Zoo  
Toledo Zoo

**OKLAHOMA**

Oklahoma City Zoo  
Tulsa Zoo

**PENNSYLVANIA**

Erie Zoo  
Gettysburg Game Park, Fairfield  
Philadelphia Zoo  
Pittsburgh Zoo  
ZOOAMERICA at Hersheypark, Hershey

**SOUTH CAROLINA**

Greenville Zoo  
Riverbanks Zoo, Columbia

**TENNESSEE**

Knoxville Zoological Park  
Memphis Zoo & Aquarium

**TEXAS**

Abilene Zoo  
Central Texas Zoo, Waco  
El Paso Zoo  
San Antonio Zoo & Aquarium  
Texas Zoo, Victoria  
Dallas Zoo

**UTAH**

Hogle Zoo, Salt Lake City

**WISCONSIN**

Jo-Don Farms, Franksville  
Milwaukee County Zoo, Milwaukee

**CANADA**

Calgary Zoo, St. George's Island

**FREE MONORAIL RIDE ONLY**

Kings Dominion, Diswell, Virginia  
Kings Island, Kings Island, Ohio

\*Free admission to baby zoo only. Zoo is free but there is a \$2 charge per car to enter the park.

## LIMITED EDITION ZOO PRINTS

Limited edition prints of a Winter Sunset on Lake Evinrude by Robert Pence, a well known Wisconsin artist, are available through the Zoological Society.

All proceeds from the prints will be used for the exciting renovation of the Polar Bear Exhibit.

\*\*\*\*\*

NAME \_\_\_\_\_

ADDRESS \_\_\_\_\_

CITY \_\_\_\_\_ STATE \_\_\_\_\_ ZIP \_\_\_\_\_

MONEY ORDER \_\_\_\_\_ CHECK \_\_\_\_\_ CHARGE TO VISA \_\_\_\_\_ MASTER CARD \_\_\_\_\_

ACCT. # \_\_\_\_\_ EXPIRATION DATE \_\_\_\_\_

SIGNATURE \_\_\_\_\_

Please reserve my limited edition print(s). I have enclosed my payment or Visa/Master Card number for \$\_\_\_\_\_

**PRINTS WILL BE AVAILABLE BY JUNE 28, 1986**

Please make checks payable to: ZOOLOGICAL SOCIETY OF MILWAUKEE COUNTY  
MAIL TO: 10001 West Bluemound Road, Milwaukee, WI 53226

\*\*\*\*\*

PRINTS # 5-10 are each remarked differently by Robert Pence . \$250 each  
PRINTS # 11-100 signed by Robert Pence ..... \$100 each

Print numbers will be issued on a first come first serve basis. Once assigned a print number, buyers will have the first option to purchase the same print numbers on subsequent prints.

**A special thanks to Mueller-Krus and Reliable Paper for underwriting the cost of producing the prints.**



## Photo contest winners announced

The Zoological Society of Milwaukee County would like to thank all 300 participants in the 1986 2nd Annual Zoo Photo Contest.

The top three winning photos will appear in the 1986-87 Zoo calendar.



Second place — American Flamingo by Mary Bungi.

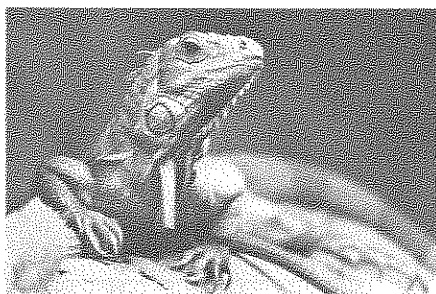
Congratulations to the winners:

1st Place—Karen Biehn Bishop  
2nd Place—Mary Bungi  
3rd Place—Jim Larkin

Special thanks to the following for donating prizes and judging the entries:

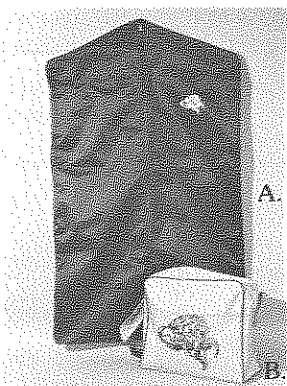
Fotomat Corporation  
Marilyn Radtke, Fotomat Corporation  
Dave Denemark, Photogenic Communications  
Nina Schaeffer, Zookeeper, Milwaukee County Zoo

*Editor's Note:* The first place photo was unavailable at press time.



Third place — Iguana by Jim Larkin.

## 25% OFF ZOO LUGGAGE



A. Traveler's Valet — Reg. \$30.00, Sale Price \$22.49. Durable black nylon with center opening. Features Velco® hanger wrap plus tote strap for easy carrying. Distinctive Zoo monogram makes for easy recognition when traveling. 25¼" x 42¼".

B. Zoo Flight Bag — Reg. \$15.00, Sale Price \$10.99. Durable, lightweight grey nylon with outside pocket and adjustable shoulder strap. Zoo monogram accents this handy bag. 13¼" x 11-5/8" x 4¾".

Name \_\_\_\_\_

Address \_\_\_\_\_

Phone \_\_\_\_\_

I've enclosed a check or money order payable to Milwaukee County Zoo.

Please charge by MasterCard/Visa.

Account # \_\_\_\_\_

Signature \_\_\_\_\_

Expiration Date \_\_\_\_\_

Item	Price	Quantity Ordered	Total
Flight Bag	\$10.99		
Traveler's Valet	\$22.49		
		Add \$2.00 Shipping & Handling Per Piece	
		5% Sales Tax	
		<b>TOTAL DUE</b>	

Mail to:  
**MILWAUKEE COUNTY ZOO**  
c/o Gift Shops  
10001 W. Bluemound Rd.  
Milwaukee, WI 53226

## ZOO PRIDE

### VIP tours offered this summer

Zoo Pride will be offering a summer behind-the-scenes tour beginning in July and running through October which will highlight new and expanded areas. The cost of a V.I.P. tour is \$7.50 per person with a \$20 minimum charge. This fee includes Zoo admission and parking. Please contact the Zoo Pride office, 258-5667, to schedule a date for a tour. No V.I.P.'s under 12 years of age, please!

### Our Pride is growing

Effective April 1, 1986, the Docents joined Zoo Pride to become one volunteer organization at the Milwaukee County Zoo. The Docents will become the Youth Education Committee within Pride and continue to conduct Youth Tours for Schools and Youth Groups through the Education Department. This enjoinment of the two organizations will undoubtedly be a benefit to members of both groups. Welcome aboard, Docents!

### Birthday parties offered

Plan your child's next birthday party at the Milwaukee County Zoo. Complete with birthday cake and all the trimmings plus activities in the Zoo, this is one day that your child will truly remember! For further information, please contact Mary Rockstad at the Zoo Pride office, 258-5667. Due to the popularity of the program please plan ahead and book your party eight weeks in advance.

### Something for everyone!

Zoo Pride, the volunteer auxiliary of the Zoological Society, offers exciting opportunities for interested individuals.

For additional membership information, please contact Zoo Pride, 258-5667.

### For a wild time . . .

Bring the Milwaukee County Zoo to your next club meeting! Zoo Pride's Speaker's Bureau offers an outreach program highlighting a day at the Zoo. Your "guide" for this presentation is a Zoo Pride volunteer who is well versed in all the comings and goings at the Zoo. For additional information, please contact the Zoo Pride Office, 258-5667.

### Teddy bear days returns

Zoo Pride and Tri City National Bank will again host this unBEARlievable event for Teddy Bear lovers, enthusiasts and collectors! Bring your favorite Teddy Bear to the Zoo for a free health check-up at the Teddy Bear Hospital/Clinic and receive a

personalized BEARTificate of health!

Teddy Bear Days will include these exciting activities:

#### DAILY ATTRACTIONS:

**Teddy Bear Breakfast:** A yummy pancake breakfast, entertainment, Teddy Bear button and cookie. **Pre-paid reservations required.**

**BEARTIQUE:** Handcrafted Teddy Bears by The Teddy Bear Company. Bear essentials by the Finch's Nest, Puzzle Box, and more! 10:30 a.m.-4:30 p.m.

**Teddy Bear Hospital/Clinic:** Free health check-up for Teddy and minor surgery for injured Teddies. 10:30 a.m.-4:30 p.m.

**Name Our Teddy Bear:** Enter our "Name Our Teddy Bear Contest" for a chance to win the Teddy Bear Day's own Teddy Bear Mascot. Winner will be announced on Sunday, June 15 at the Teddy Bear contest ceremony.

**Traffic Bear:** Meet Milwaukee County Zoo's Traffic Bear and obtain our collection of BaseBear Cards.

**BEARhind the Scenes:** Sneak a peak at one of our Bear dens from noon to 3 p.m. daily.

**Paw Printiculars!:** Place your name and home town inside a bear footprint for our paw print board, take home a Teddy Bear Day sticker and have your hand stamped with bears extraordinaire!

**Special Attractions!!!** June 14 and 15 ONLY.


**Teddy Bear Ice Cream Social:** Back by popular demand, this old-fashioned ice cream social will feature StrawBEARy and Brown Bear Sundaes. The social will be on the Flamingo Cafe Patio with musical entertainment by BarBEAR Shop Quartets! 11 a.m. to 4 p.m.

**FACE Painting:** Have a designer Teddy Bear skillfully painted on your face by a Zoo Pride Volunteer. 10 a.m.-4 p.m.

#### TEDDY BEAR CONTEST AND PARADE ON JUNE 15

**Teddy Bear Contest:** Bring your favorite Teddy Bear to enter in the Teddy Bear Contest. Registration is from 10:30 a.m. to noon in the South Dining Room. Judging will take place in the Feline Building from 1 p.m. to 2 p.m. No live entries, please!!

**Teddy Bear Parade:** March along with the contestants from the Teddy Bear Contest from the Children's Zoo to the Flamingo Patio where the winners of the contest will be announced and the prizes will be awarded.



# Breakfast With the Teddy Bear

**Thurs., Fri., Sat., Sun., June 12th, 13th, 14th, 15th  
9 A.M., Flamingo Cafe, Milwaukee County Zoo**

Breakfast with the Teddy Bear is a fun way to begin the day. The breakfast will feature "All the Pancakes" you can eat, sausage, juice, applesauce and a beverage. BINGO the Clown will provide "magical" entertainment with our own TEDDY BEAR acting as his assistant. There will be a special teddy bear cookie to take home, and a special "Breakfast With The Teddy Bear" button for every girl and boy. Tickets are \$5.00 for children and adults. Tickets must be purchased in advance. Limited seating. Use the order form below.

## BREAKFAST WITH THE TEDDY BEAR

Please send \_\_\_\_\_ tickets @ \$5.00 each.

Check 1st, 2nd, 3rd and 4th choice:

June 12 \_\_\_\_\_ June 13 \_\_\_\_\_ June 14 \_\_\_\_\_ June 15 \_\_\_\_\_

Enclosed is a check or money order for \$ \_\_\_\_\_, and a  
STAMPED, SELF-ADDRESSED ENVELOPE.

Name \_\_\_\_\_

Address \_\_\_\_\_

City \_\_\_\_\_ State \_\_\_\_\_ Zip \_\_\_\_\_

Phone \_\_\_\_\_

Send check and make payable to: ZOO PRIDE — TEDDY, 10001 W. Bluemound Road,  
Milwaukee, WI 53226. No reservation or cancellations after June 5.  
Please present ticket at gate for admittance.

## DAY SAFARI

**For Members of Zoological Society of Milwaukee County**  
Visit Terra, a lowland gorilla from the Milwaukee County Zoo and natural mother to Mandara, who is on breeding loan to Lincoln Park.

### LINCOLN PARK ZOO, CHICAGO

Saturday, July 26, 1986 • 7:15 a.m. - 5:30 p.m.  
Arrangements by Zoo Pride

#### \$20.00 Individual Cost Provides:

- Zoo to Zoo Bus Transportation
- Continental Breakfast
- Light Refreshments During Return Trip
- Box Lunch

Space is limited. Reservation deadline July 19, 1986. No cancellations after that date.

Name \_\_\_\_\_

Address \_\_\_\_\_

\_\_\_\_\_ Zip \_\_\_\_\_

Telephone Number \_\_\_\_\_

Reservations at \$20.00 Per person \$ \_\_\_\_\_ (Total Enclosed)

Make check payable to ZOO PRIDE and mail to:  
**DAY SAFARI**  
c/o Zoo Pride Office, 10001 W. Bluemound Road  
Milwaukee, Wisconsin 53226

## PANDA MANIA!!!

ZOO PRIDE has planned a field trip to the National Zoo in Washington, D.C., for 4 days/3 nights from September 26 to September 29. We're looking forward to visiting the new home of Mandara, our young Lowland Gorilla, and her companion Kuja, as well as getting a glimpse of the rare Giant Pandas. Plan on joining us!!

### THE PANDA MANIA PACKAGE INCLUDES:

- Direct Round Trip Airfare to Washington, D.C. on Midwest Express
- All Transportation Taxes
- 3 nights lodging at Governor's House—Holiday Inn (located 5 blocks from the Capitol)
- Round trip transportation from airport to hotel
- All baggage and hotel taxes
- Round trip transportation from hotel to National Zoo
- A 4-hour city tour of Washington, D.C.
- Breakfast on the flight from Milwaukee to Washington, D.C.
- Dinner on the return flight to Milwaukee

The flight departs on the morning of September 26 and returns on the evening of September 29

### PANDA MANIA PACKAGE PRICES . . .

Single Room Occupancy	.....	\$535.00	per person
Double Room Occupancy	.....	\$440.00	per person
Triple Room Occupancy	.....	\$400.00	per person
Quadruple Room Occupancy	.....	\$380.00	per person

Space is limited! To reserve a space please send a \$50.00 deposit per person to:  
**Panda Mania, c/o ZOO PRIDE**  
10001 W. Bluemound Road, Milwaukee, WI 53226

Name \_\_\_\_\_

Address \_\_\_\_\_

City \_\_\_\_\_ State \_\_\_\_\_ Zip \_\_\_\_\_

Telephone Number: \_\_\_\_\_

Number of Reservations \_\_\_\_\_

TOTAL AMOUNT DUE: \_\_\_\_\_

(LESS) DEPOSIT: \$50 PERSON \_\_\_\_\_

BALANCE DUE BY AUGUST 22ND \_\_\_\_\_

The balance of payment is due by August 22, 1986. No cancellations will be accepted after August 22, 1986. Cancellations prior to that date are subject to a \$10.00 service charge.

---

# AT THE ZOO

---

**May 31—Scout Show.** Catch the Scouting spirit at the Milwaukee County Boy Scouts' annual show.

**June 7—Black-Footed Decatalon.** A twilight run at the Zoo with the proceeds earmarked for the purchase of a pair of black-footed cats — the smallest cats in the world.

**June 12-15—Teddy Bear Days.** Mama, Papa and Baby Bears will all be there to make this an un“bear”lievable event. Teddy Bear Days sponsored by Zoo Pride.

**June—Surfin' Safari.** The nationally acclaimed dolphin/sea lion show opens at your Milwaukee County Zoo.

**June 11-12—Annual Picnic.** This date is one all Zoological Society members should keep. Note date change.

**June 21-July 13—Miniature Circus Display.** An animated miniature circus display is featured in honor of Milwaukee's famous Circus Parade.

**June 28—Polar Expedition.** A night of dancing and dining at the third annual Zoo Ball. You won't want to miss the social event of the year and a chance to fund raise for the upcoming polar bear exhibit.

**July—Polar Bear Exhibit Opens.** Visitors will see the underwater antics of the Zoo's three polar bears.

**July 5-6—Salute To The Great Lady.** The Milwaukee's Symphony Orchestra salutes the Statue of Liberty by performing works by Gershwin and Bernstein. Call 258-2333 to order tickets.

**July 12-13—Under The Big Top.** Shari Lewis and Ernest Borgnine will perform with the Milwaukee Symphony Orchestra. Call 258-2333 to order tickets.

**July 17—Zoological Society Beauty And The Feast.** Champagne Picnic and guest speaker for members and their families.

**July 19—Feeling Groovy.** Milwaukee Symphony Orchestra and guest artist perform at the Zoo.

**July 19-20—The Eyes Have It.** Free vision screening for preschool age children.

**July 21—Women for MACC Children's Fashion Show.** Proceeds benefit the Midwest Athletes Against Childhood Cancer Fund. Call 242-3845 for details.

**July 26-27—Great Gatsby Party.** Marvin Hamlisch joins the Symphony on July 26. Lionel Hampton is the guest artist July 27.

**August 7—Family Reunion.** Annual picnic for all Zoo parents is a summer delight.

**August 15-17—Milwaukee A La Carte.** Milwaukee's finest restaurants will gather at the Zoo for three days of good food and fun.

## ALIVE

Published Quarterly by the  
Zoological Society of Milwaukee County  
10001 West Bluemound Road  
Milwaukee, Wisconsin 53226

Lillian Ramaker, Executive Director  
Kerry J. Bublitz, Editor

In support of Milwaukee County Zoo  
Gilbert K. Boese, Ph.D., Director

Accredited by the  
American Association of  
Zoological Parks and Aquariums