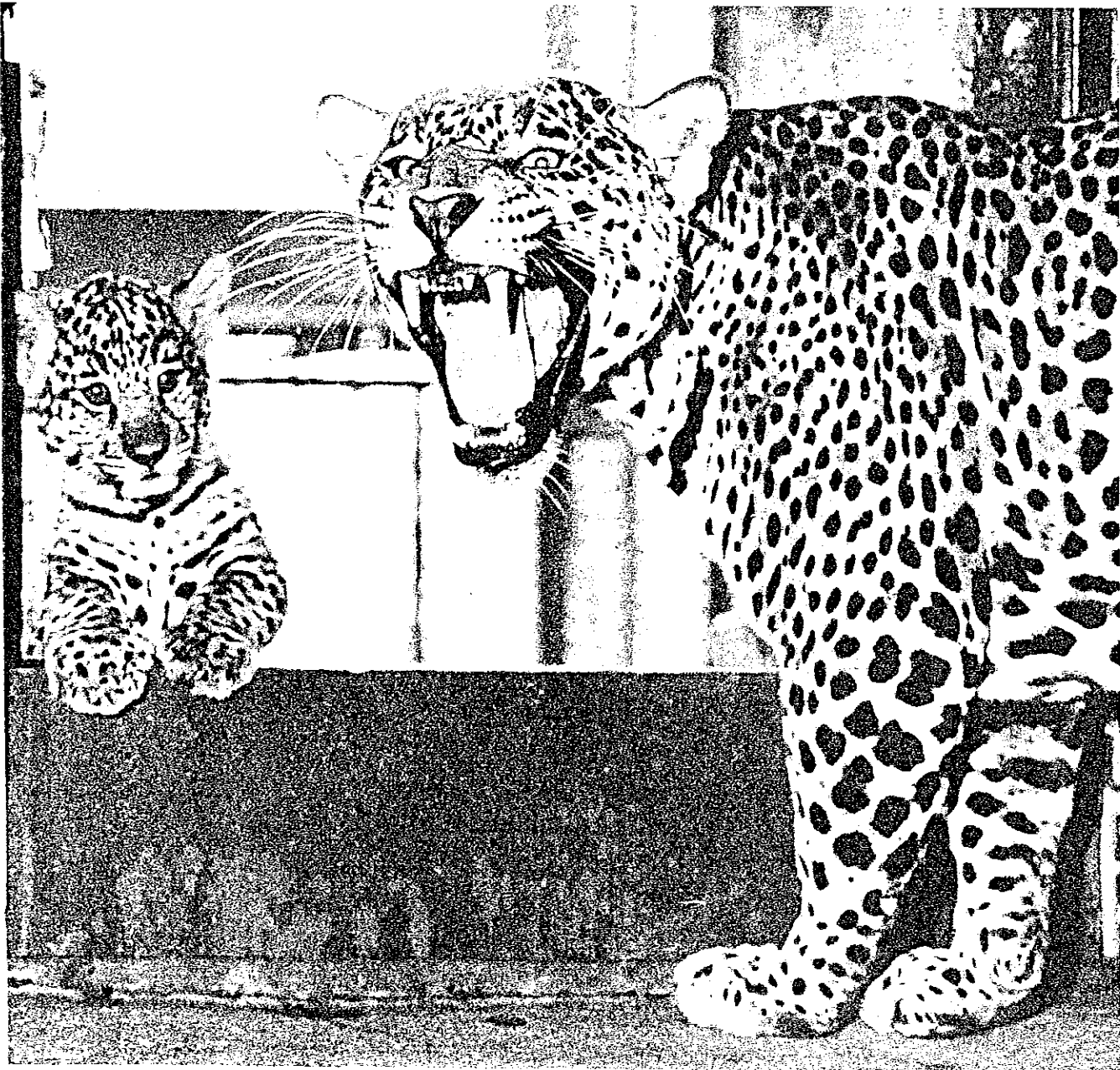


Milwaukee Zoo news

Volume 9

December, 1960

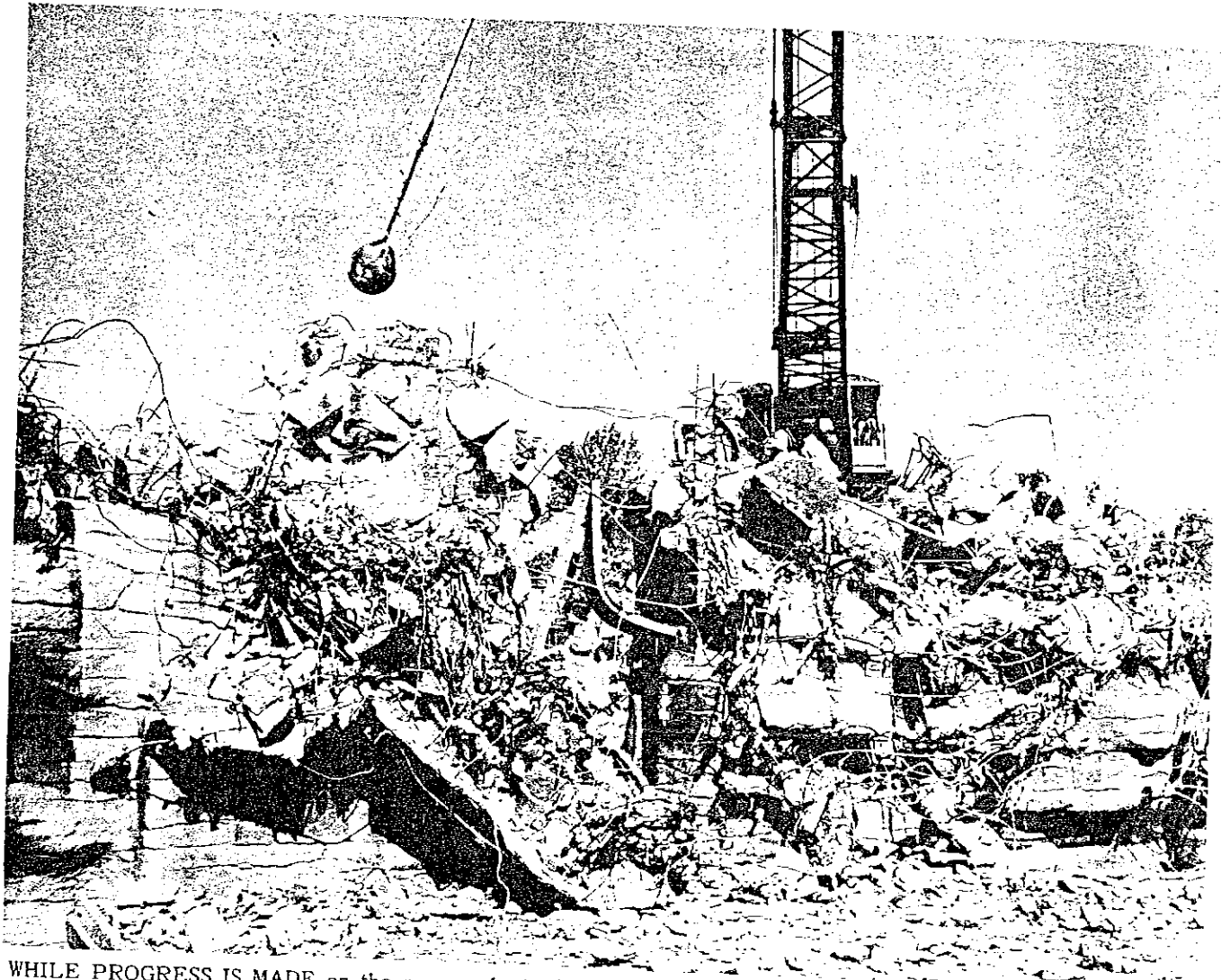
No. 3



EXPRESSING HOLIDAY GREETINGS in her own inimitable manner, San Antonio Queen II posed with her new jaguar cub at the Washington park zoo.

Queen, who has given birth to other litters in previous years, became the mother of two cubs this fall.

Now...



WHILE PROGRESS IS MADE on the new zoological gardens, part of Washington park is falling before the wrecker's ball. The elephant quarters and bear dens on the west side of the park are being razed

to make room for expressway construction. Two elephants, Lota and Tamara, and black, brown and polar bears were moved to the new zoo so that their homes could be razed.

Work at New Zoo Passes Mid-Point

Construction at the new zoo site reached another milestone in 1960 as it passed the halfway point in the \$13 million project and buildings began mushrooming throughout the 140 acre tract.

According to Howard W. Gregg, general manager of parks, construction for the most part is on schedule and the 1964 completion date is likely to be attained.

Gregg reported that the total construction at the end of 1960 was about \$7 million. Completed or under construction at the end of 1961, he said, will be \$9,283,846 in buildings.

Temporary walks will be installed next spring, Gregg said, and visitors will be able to go to the primate house--the only building now open--and walk to the bear dens, the pachyderm units and the carnivore house.

Zoo Director George Speidel predicts that about a million persons will visit the new zoo next year, about as many as that recorded at the old zoo at Washington park each year.

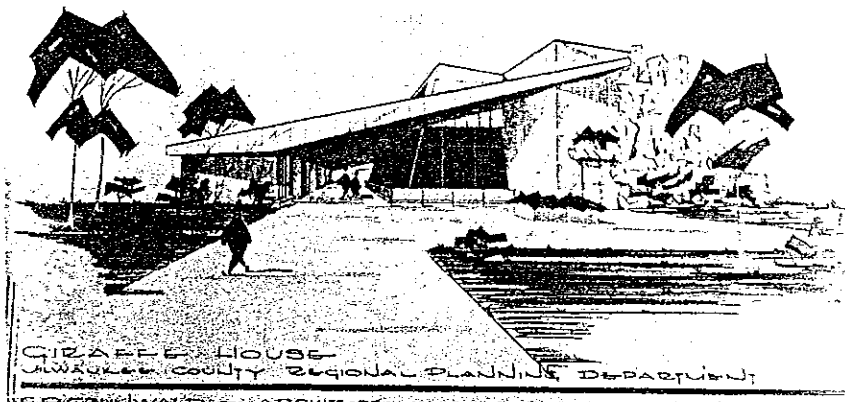
Here, point by point, is the summary of work performed by the county park commission during 1960 and the work scheduled for 1961:

Primate Building -- landscaping started on outside area during 1960. In 1961 landscaping will be completed.

Carnivora Development -- Carnivora structure completed during 1960. Interior gunniting of rock formations to be completed this winter. In 1961 exterior yard development (including three moats, four high walls to enclose yards from winterquarters, and series of continuous walls to separate yards from pedestrian walk) will be completed. Gunnite rock formations for outside of structure will be started in 1961.

(Continued on Page 3)

... And in the Future



THIS IS WHAT the giraffe house will look like at the new zoo. Construction on the giraffe house is expected to be completed during 1961, to match the already completed pachyderm building nearby. Gunnite work on the outside also will be started next year.

(Continued from Page 2)

Pachyderm Giraffe Development -- Two pachyderm structures completed during 1960. Giraffe structure (including public toilets) started this year and will be completed early next year. In 1961, exterior yard development (including two moats and series of continuous walls to livide yard from pedestrian walk) will be completed. Interior gunnite rock formations for vo pachyderm structures will be completed this winter. Gunnite rock formations for outside of vo pachyderm structures and giraffe structure will be started 1961.

Monkey Island Development -- Structure completed during 1960. Plans for island to be completed this winter. Guard rail surround-pool to be erected next spring. Landscaping, including walks, and development will be completed next year.

Service Building -- Two structures completed in 1960. Roughing for entire area completed this year. Fence around service area to be erected in 1961. Development of line for railroad and access to zoo area to service area completed late in 1961 depending upon the construction of necessary underpass by pressway commission.

House -- Preliminary plans prepared by Grassold-Johning 1960. Depending upon site determination and pre-

paration of final plans, construction could begin in 1961.

Railroad Development -- Plans for depot completed and contract let in 1960 with structure completed in early 1961. Spur line from main track to service area will be installed late in 1961 depending upon the underpass completion.

Lagoon Development -- Overflow dam at southeast end of lagoon at Lake Evinrude completed during 1960. No further

Milwaukee Zoo News

Published by the
Zoological Society of Milwaukee County
for the Washington Park Zoo
which is under supervision of the
Milwaukee County Park Commission
Board of Directors of
Zoological Society

OFFICERS

Robert T. Foote President
A. D. Robertson 1st Vice President
R. C. Zimmerman ... 2nd Vice President
Allen W. Williams ... Secretary-Treasurer
George Speidel Director,
Zoological Gardens

DIRECTORS

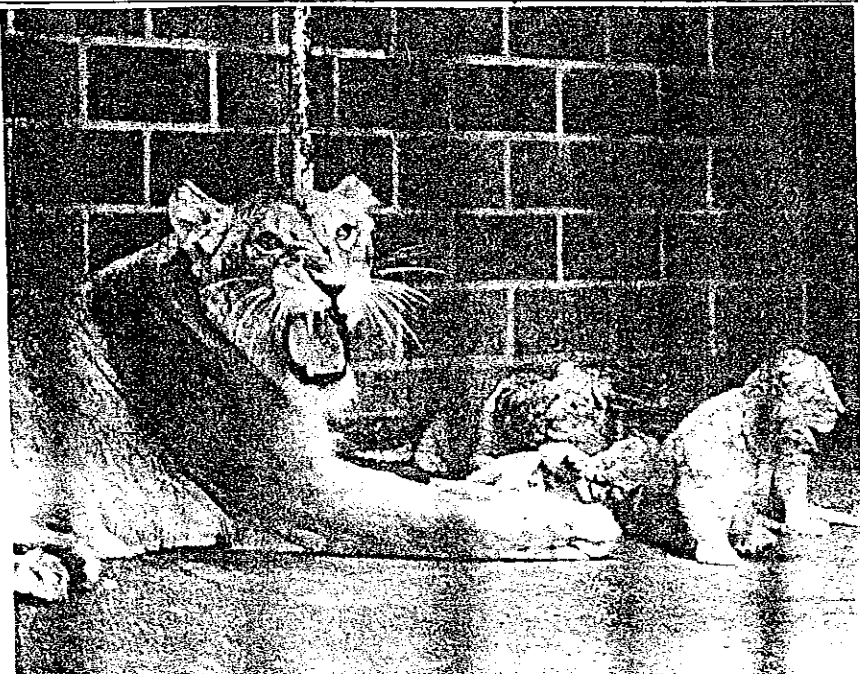
George Donovan, Philip H. Dorr, Robert T. Foote, C. P. Fox, Immediate Past President and ex-officio Board Member, Otto R. Kuehn, George D. LaBuede, William A. Lohse, Philip W. Orth, Jr., Frederick L. Ott, H. S. Peck, William R. Pollock, Jr., Clifford Randall, Ray Rediske, A. D. Robertson, Larry H. Smith, Richard H. Tewes, Harold S. Vincent, Albert O. Vogel, George L. Waetjen, Allen W. Williams, Frederick C. Winding, R. C. Zimmerman

construction necessary. At the moose yard, overflow dam and west end of lagoon completed. High moat wall also completed and moose shelter plans completed and shelter to be erected this winter.

Concession stands -- Two temporary stands to be erected early in 1961.

Winter Quarters (Hoofed Animals) -- Structure 90% completed

(Continued on Page 4)



QUEENIE II SNARLED as she and her five new lion cubs sat for a portrait at their home in Washington park. The quintts were born about eight weeks ago but their mother is reticent about posing. The father is King II.

POSTMASTER: FORM 3547 REQUESTED

Zoo & Bits

The Washington Park zoo recently acquired a blue and gold female macaw, the first in about eight or nine years. The bird, named Crowbar, could not get along with its mate at the home of Neil D. Bultman, 8309 W. Concordia ave., and it was given to the zoo.

The Zoo line, the miniature at the new zoo, carried 233,799 passengers this summer, compared to 163,605 last year. The train has been stored in the new service building on the south side of the new zoo site for the winter.

(Continued from Page 3)

during 1960 with completion early in 1961. Three yard shelters will be completed, along with walk development on top of the structure.

Brown Bear Development -- Structure completed during 1960. Interior floor and pool in maternity cages finished in 1960. Moats to be completed, and gunnite rock formation possible started, in 1961.

Grizzly Bear Development -- Gunnite rock formations on outside of structure to be completed in 1961. Wall separating this development from deer yard was completed in 1960.

Polar Bear-Sea Lion Development -- Polar bear structure completed in 1960. Interior floor and pool in maternity cages also completed in 1960. Necessary moats and sea lion building will be completed in 1961.



QUENCHING HIS THIRST with a bottle of milk formula, Reggie, the Alaskan Moose calf, keeps keeper Elmer Fremy busy. Reggie who has a goat for a companion in his quarters, will not be on public display until next year.

Three Distinctive Snow Leopards

Three snow leopards will be the newest additions to the new zoo.

The animals have been donated by the Miller Brewing Co. and will be the first such animals at the zoo here.

The Latin name for the snow leopard is *panthera unica*. The animal is closely related to ordinary leopards but it is nevertheless quite distinct. It has a strangely shaped skull that can be spotted by any expert, and lone, plumelike fur covering a dense wooly undercoat.

In color, the snow leopard is whitish grey tinged with yellow above and pure white below. The head and limbs are spotted with darker grey and the body is

marked with diffuse dark rosettes or rings.

Snow leopards grow to an overall length of about eight feet, including three feet for the tail. The snow leopard replaces the ordinary leopards throughout the mountainous districts of the area in central Asia north of the Himalayas to the steppes and east to the Altai mountains, Amuria, and the island of Sakhalin.

The animal ranges up to the snowline in summer but never comes much below six thousand feet in winter, except in the extreme north of its range where it lives at sea level.

The leopards will be placed in the lion house at the new zoo.