

# Wild Things

## Wines, Beers & Primates

### Wines and Beers of the World

Feb. 6, 2014, 7 p.m.-10 p.m.

**Regular tickets\***: \$40 Zoological Society members & guests;  
\$50 non-members.

**VIP tickets\*\***: \$50 Zoological Society members and guests; \$60 non-members.

Pre-register at [zoosociety.org](http://zoosociety.org) (online registrations accepted through Feb. 4) or at (414) 258-2333.

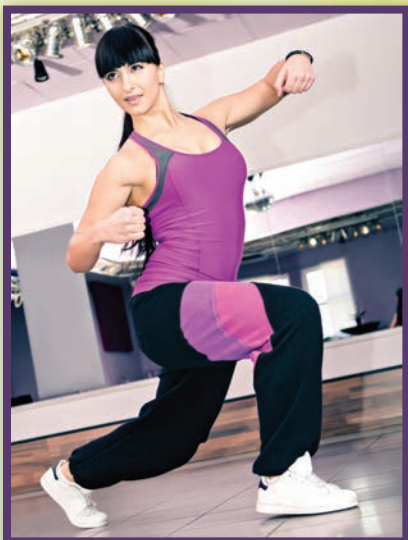
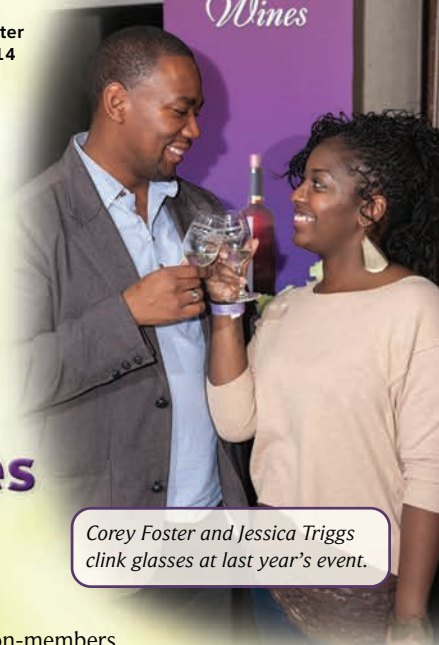
You can find great wines in many parts of the world. In a select number of places you can also find great apes (and primates). Pair them and you get the Zoological Society of Milwaukee's (ZSM's) Wines and Beers of the World fundraiser at the Milwaukee County Zoo. This is the only spirits-and-primates event in the Milwaukee area. Guests can sample wines, beers and savory foods and stroll through the Stearns Family Apes of Africa and Primates of the World buildings. Later guests can sample desserts in the U.S. Bank Gathering Place. Register now for this evening event—it sells out quickly. You must be at least 21 years old to attend.

**Special thanks to:** Ball 'n Biscuit Catering; Café Hollander; Café Manna; Clock Shadow Creamery; Crispin Cider Company/St. Killian Imports; Duvel USA; East Shore Specialty Foods; FortuNuts LLC; Gigi's Cupcakes; GreatBrewers.com; Horny Goat Brewing Co.; Kensington Liquor; La Fuente Restaurants; Maggiano's Little Italy; MillerCoors; Milwaukee Brewing Co.; New Belgium Brewing Company; The Oilerie® Brookfield; Palermo's® Pizza; Racine Danish Kringles; Sassy Cow Creamery; Saz's Hospitality Group; Shully's Cuisine & Events; Sprecher Brewery; Stone Creek Coffee; Usinger's Famous Sausage; West Allis Cheese & Sausage Shoppe; Zilli Hospitality Group.

\*ZSM members' guests must register at same time as members. \*\*VIP ticket holders get early entry at 6 p.m. and are entered into a drawing to win a behind-the-scenes tour of the Zoo. Your fee, less \$25, is tax-deductible and includes a complimentary, etched wine glass (5.6% WI sales tax included). You must pre-register and you should do so early—event usually sells out. All ticket sales are final and are not refundable.

+Wine can be ordered at the event. However, Wisconsin state licensing laws do not allow us to sell wine at the event. You can pick up and pay for your order at Kensington Liquor (4496 N. Oakland Ave., Shorewood 53211). Discounts for larger purchases: 5% off for 6 to 11 bottles; 10% off for 12 or more. A percentage of all wine sales benefit the ZSM annual appeal for the gorillas.

*Corey Foster and Jessica Triggs  
clink glasses at last year's event.*



## ZOO ZUMBA®

### Zumba® Party at the Zoo

Feb. 22, 6-8 p.m.; registration at 5 p.m.

Entry fee: \$15; open to ages 14 and up. No experience or dance training needed. All fitness levels welcome.

Event takes place in the Zoo's Peck Welcome Center.

Pre-register at [zoosociety.org/Zumba](http://zoosociety.org/Zumba) or call

(414) 258-2333, or with registration form on page 8.

Need to get rid of that winter cabin fever? Or do you just love to dance? Combine exercise and dance at the Zoological Society's new Zumba® Party at the Zoo fundraiser, led by Zumba Jammer™ Rachel Beigel and other licensed Zumba® instructors. This fun-and-fitness event focuses on cardiovascular strength through easy-to-follow choreography set to upbeat world rhythms. Money raised benefits the ZSM's Sponsor an Animal program. Your fee, less \$3, is tax-deductible.

#### *In This Issue...*

- Shed your coat at Zootastic...page 5
- Polar bear-gorilla connection...page 6
- Farm-to-table food at the Zoo...page 9
- Blood & Sugar...page 12
- Rescued Sea Lion Pup at Zoo...page 13

#### Connect With Us:

- [facebook.com/ZooPass](http://facebook.com/ZooPass)
- [twitter.com/ZooSocietyMKE](http://twitter.com/ZooSocietyMKE)
- [youtube.com/MilwaukeeCountyZoo](http://youtube.com/MilwaukeeCountyZoo)

# fun, hands-on education programs

## Spring Classes Still Open

The following Zoological Society of Milwaukee (ZSM) classes still had openings when we went to press. For availability of spring (Feb. 7-May 18) classes at the Zoo and to register online, check our website at [zoosociety.org/Spring](http://zoosociety.org/Spring) or call (414) 258-5058.

- **Age 2 (accompanied by an adult):** Hop like a cricket and crawl through a giant ant hill in the February class, **Little Love Bugs**. In March, create a bunny costume featuring face paint, whiskers and a nose. Then paint a giant rabbit and hop on our bunny trail during **Bunnies**.
- **Age 3 (accompanied by an adult):** In the February class, **Lions...ROARI!**, you'll create a lion costume before we prowl over to see the Zoo's lions. Crawl like a chameleon and make a snake to take home in the March class, **Colorful Chameleons & Sssuper Snakes**.
- **Ages 4 & 5:** Help find clues and spy on animals in **Rainforest Mystery**, offered in February as a kids-only class OR for a child accompanied by an adult. In March you can create your own vet kit and use your veterinary skills. Then "operate" on a toy animal at the surgery station during **Junior Vet**, offered for kids only OR for a child accompanied by an adult.



Photo by Richard Taylor

*Kason H., 2, from Sussex, wore a frog outfit he made in Leap Frog class.*

## Summer Camp Priority Registration

The brochure listing ZSM 2014 Summer Camps, sponsored by Penzeys Spices, is packaged with this *Wild Things*. Registration begins on Feb. 5. Check the website for availability and online registration information at [zoosociety.org/Summer](http://zoosociety.org/Summer).



## MEMBERANDA

We value your relationship with the Zoological Society of Milwaukee (ZSM). The ZSM does not sell member/donor information to third parties, but may share limited information with the Milwaukee County Zoo for the purpose of confirming membership status.

**Zoological Society office hours:** Through April: Weekdays, 8:30 a.m.-4:30 p.m.; Saturdays and Sundays, 9:00 a.m.-4:30 p.m.

**Zoo hours:** Through Feb. 28: Weekdays, 9:30 a.m.-2:30 p.m. Weekends, 9:30 a.m.-4:30 p.m. **Please note that the Zoo's admission gates close 45 minutes before the posted Zoo closing hours. Zoo animal buildings close 30 minutes before posted Zoo closing time.**

**Payment Information at Zoo Admission Gates:** The Milwaukee County Zoo staff does not accept checks for Zoo Pass purchases or renewal payments at the Zoo's admission gates.

**For tax-time tips, Zoo Pass benefits and other details,** please see Tax Tips at: [zoosociety.org/Membership/Things2Know](http://zoosociety.org/Membership/Things2Know).

**For Zoo Pass purchases prior to Feb. 1, 2013, the tax-deductible portions for the following categories are:** Individual (Basic: \$56, Plus: \$58), Individual +1 (Basic: \$61, Plus: \$63), Individual +2, Family and Single Adult Family (Basic: \$71, Plus: \$77), Family +1 (Basic \$81, Plus: \$87), Family +2 (Basic: \$89, Plus: \$96), Family +3 (Basic: \$108, Plus: \$115), Affiliate (Basic: \$199, Plus: \$202), Benefactor (Basic: \$276, Plus: \$273).

**For Zoo Pass purchases after Feb. 1, 2013, the tax-deductible portions for the following categories are:** Individual (Basic: \$60, Plus: \$71), Individual +1 or Couple (Basic: \$70, Plus: \$80), Individual +2, Family and Single Adult Family (Basic: \$75, Plus: \$95), Family +1 (Basic \$94, Plus: \$104), Family +2 (Basic: \$101, Plus: \$113), Family +3 (Basic: \$117, Plus: \$126), Affiliate (Basic: \$154, Plus: \$157), Benefactor (Basic: \$218, Plus: \$220).

**Reciprocal Zoos and Aquariums:** We update our list of zoos and aquariums that offer reduced or free admission to our members with the Association of Zoos and Aquariums (AZA) in January. We reciprocate only with AZA-accredited facilities and reserve the right to not reciprocate with zoos and aquariums within close proximity of the Milwaukee County Zoo. Please be sure to contact our offices prior to your travels at (414) 258-2333, or visit [zoosociety.org/ recip](http://zoosociety.org/ recip), if you have any questions.

**Moving?** Please call us when you change your address or name. The call saves us money because when the post office returns your mail with a forwarding address, we pay twice for mailing: to the old address and the new. If you've changed your address on your identification, replacement cards may be purchased with the new information for \$5.

### WILD THINGS

Issue No. 110, January-March 2014

*Wild Things* is a membership newsletter published by the Zoological Society of Milwaukee six times a year: in January-March, April-May, June, July-August, September-October, November-December.

Editor: Zak Mazur

Designer: Kevin de Wane

Contributing editor and writer: Paula Brookmire

Contributing writer: Dana Christen

Photographer: Richard Brodzeller (unless otherwise noted)

Write to any of us at the Zoological Society, 10005 W. Bluemound Rd., Milwaukee, WI 53226-4383 or e-mail [publications@zoosociety.org](mailto:publications@zoosociety.org).

Web: [zoosociety.org](http://zoosociety.org)



## Summer Internship Opportunity

College students and recent college graduates: Want to get experience working with children ages 2-14 and have fun this summer? Then apply for a 2014 summer-camps internship at the Zoological Society. After substantial training, college-age interns help with educational activities, lead Zoo tours, prepare classroom materials, and help supervise and evaluate high school volunteer assistants. Interns are mentored by education staff and Zoo Pride volunteers and focus on developing professional skills. (Interns do not handle animals directly.) Cover letter and resume are due to Patty T. by Feb. 10, 2014. Interviews are held in March. Apply on our website: [zoosociety.org/jobs](http://zoosociety.org/jobs).

## High School Assistant Volunteers at Camps

High School students, are you looking for something fun and educational to do this summer? Consider volunteering in the Conservation Education Department's summer camps for two weeks. Students ages 15-18 help children with art and learning activities, Zoo tours and camp setup and takedown. ZSM members and non-members may apply. Call (414) 258-5058, ext. 428, for an application and interview information. Application deadline is April 2, 2014.

## Programs for School Classes at the Zoo

In fall and spring, the Zoological Society publishes a brochure listing numerous education programs offered either at the Zoo or as outreach to schools. The school brochure also can be found at [zoosociety.org/School](http://zoosociety.org/School).

## Early Childhood Teacher Workshop: Reptiles—Feb. 8

What group of animals has hard, dry scales and is coldblooded? Reptiles, of course! Teachers will learn how to incorporate age-appropriate animal information into learning stations, projects, and activities for their own classroom environment. This Saturday workshop will include hands-on group learning activities and a guided Zoo tour. A \$20 fee includes the workshop, parking and Zoo admission. To register, please call (414) 258-5058 or download the registration form at [zoosociety.org/teacheredu](http://zoosociety.org/teacheredu).

## UWM Course at the Zoo for Teachers

**Animal Habitats and Adaptations** is a two-day University of Wisconsin-Milwaukee course for teachers of third grade through high school held April 12 and 13 at the Zoo. The course, run by the ZSM, explores the survival needs of animals as well as the functions of a modern zoo. It runs from 8:30 a.m. to 4:30 p.m. both days. Included are tours, discussions and activities to help teachers develop study units. This one-credit course can be taken for graduate or undergraduate credit. Call UWM Outreach, (414) 229-5255, for fees and registration.



Photo by Richard Taylor

*Sofia L., 7, from Milwaukee, sprays an ocean background for a class about sting rays and sharks.*

# TREE 'ROOS, GROUND 'ROOS

## Kids Conservation Club Workshop

Saturday, March 22, 10 a.m.-noon.

With their ability to spring as far as 25 feet, kangaroos are well-adapted for life on the ground. But some species of kangaroos are just as comfortable in trees! In the "Kangaroos in Trees" workshop, kids learn about tree kangaroos and their ground-dwelling kangaroo relatives. After making kangaroo crafts, kids can visit the Zoo's Matschie's tree kangaroos and red kangaroos in the Australia Building for a zookeeper talk about these amazing marsupials. This workshop is open to members of the Kids Conservation Club. Enrollment in the club is \$20 per child. To register for the workshop or to become a member, call Becky L. at (414) 258-2333, ext. 201.



*Wileroo, a male red kangaroo.*

# DISNEY MEMORY LANE

## Trip to Chicago's Museum of Science & Industry featuring the Walt Disney Traveling Exhibit

Saturday, Feb. 15, 2014, 7 a.m.-6:30 p.m.

Cost: \$55 per person.

Register online, [zoosociety.org](http://zoosociety.org), or call (414) 258-2333.

It will be a walk down memory lane at the Treasures of the Walt Disney Archives, a traveling exhibit at Chicago's Museum of Science and Industry. Register now for this Zoological Society of Milwaukee field trip. View nearly 300 Disney artifacts as well as hands-on, interactive stations that bring Disney's technological breakthroughs in animation to life. You can also learn about the technology behind 53 animated Disney feature films. Tickets are for general admission and the Disney exhibit; other admission-based exhibits are not included.

Registration starts at 7 a.m. at the Milwaukee County Zoo with a continental breakfast in the Flamingo Café. Buses leave at 8 a.m. and return at 6:30 p.m. Tour includes transportation on restroom-equipped motor coaches and beverages donated by PepsiAmericas®. You are responsible for your own lunch. A snack is included on the return trip. (Note to those with allergies: Snack may include dairy and peanut byproducts.) This excursion is open only to Zoological Society members and their guests. An itinerary will be mailed prior to the trip.

*The traveling costume worn by Julie Andrews in "Mary Poppins."*



©Disney

## A PEEK INSIDE

### Behind the Scenes Weekend

March 8 & 9, 10 a.m.-2:45 p.m.,  
Milwaukee County Zoo.

Free Zoo admission for Zoological Society members with ID. Milwaukee County parking fee: \$12. Call (414) 256-5466 for information.

What does a gorilla eat for dinner? Where do the zebras go in winter? Who operates the train? Find out what goes on behind the scenes at the Milwaukee County Zoo during this special weekend where you can peek inside or behind animal exhibits. Stop by the Zoo's Commissary for a first-hand look at how animal food is prepared. Then check out Winter Quarters, where warm-weather animals stay for winter. At the Train Shop, learn the ins-and-outs of the Zoo's steam engines and diesel engines. Members of the Zoological Society of Milwaukee's volunteer auxiliary, Zoo Pride, will guide these tours (and many others!) and answer questions. Locations are subject to change.

*Joey and Maggie T., 14, of Milwaukee, check out what's being served at the indoor hippo area at last year's event.*



Photo by Mary Wachare



# Spring...to the Zoo

## Zootastic

**April 25, 5-9 p.m., Milwaukee County Zoo**

\$75 per family of four. Individual fees: \$15 children under 12, \$25 ages 13+. Your fee, less \$10 per person, is tax-deductible.

Registration is limited and fills up fast. Register today online at [zoosociety.org/Zootastic](http://zoosociety.org/Zootastic) or call (414) 258-2333 by April 21.

You must pre-register; fees are not refundable.

Late April in Wisconsin is when we switch from winter coats to spring jackets. Many animals shed their natural winter coats in spring, such as Bactrian camels, Dall sheep, and moose. Comparing animal coats is the theme this year at Zootastic, a Zoological Society family fundraising event filled with animals, food, and fun. Sunset is at 7:46 p.m. So there's plenty of light for guests to walk to the giraffe exhibit and compare Rahna's light-colored coat to Marlee's much darker spotted coat. Or visit the big cats and compare snow-leopard spots to jaguar spots. Get insider facts from Zoo staff and volunteers. Kids can create animal-themed crafts. Everyone can indulge in cheesy Palermo's® Pizza and an ice cream sundae from the make-your-own-sundae bar. Dance past dusk to a kid-friendly DJ. Commemorate the night with a collectible family photo. All guests under 18 must be accompanied by an adult.



Photo by Richard Taylor

*Kristina B., 2, of New Berlin, gets a lift from Mom Kasey at last year's event.*

## ANNUAL APPEAL

### Giving for Gorillas

Just like people, gorillas relish going outside and taking in the fresh air. That's why over the next year, the goal of the Zoological Society of Milwaukee is to raise funds to upgrade the outdoor gorilla habitat. Some of the things we hope to include are:

- A water feature for drinking and splashing around
- Berms to create resting places that can also protect from the wind
- Resting platforms so the gorillas can bask in the sun
- New landscape vegetation such as herbs, yarrow, and scrub willow so the gorillas can munch at their leisure during summer
- Additional enrichment items that gorillas can investigate, play with and toss about

In addition to upgrading the outdoor gorilla habitat, some of the dollars raised will provide direct cash support to help the Zoo's animals. To donate, go online to [ForTheApes.com](http://ForTheApes.com) or call (414) 258-2333 or stop at Guest Services at the Zoo. Donors of \$75 or more will be placed on a donor sign on the wall adjacent to the gorilla deck in the Zoo in late 2014.



# From Gorillas to Polar Bears

Kara DeLanty loves primates, especially gorillas. So why did this primate zookeeper head north last fall to see polar bears? Thank Wanto the gorilla. "I've worked at the Milwaukee County Zoo for about five years, but before that I worked with gorillas at the Kansas City Zoo," she says. "A male named Wanto had a hard time accepting new keepers. I spent months trying to get him to like me. One day he pushed fabric to me through the mesh. We played a friendly game of tug-of-war and I knew he had accepted me. Gorillas are critically endangered, and Wanto inspired me to want to protect other species, too." Polar bears? What's the connection?

"Humans are cutting down trees in tropical rainforests at an alarming rate," says DeLanty. "Not only does this reduce habitat for animals like gorillas, but there are also fewer trees to convert CO<sub>2</sub> into oxygen, which contributes to global warming." As ice melts, polar bears can starve because they use ice for seal hunting.



Photo provided by Kara DeLanty

Wanto

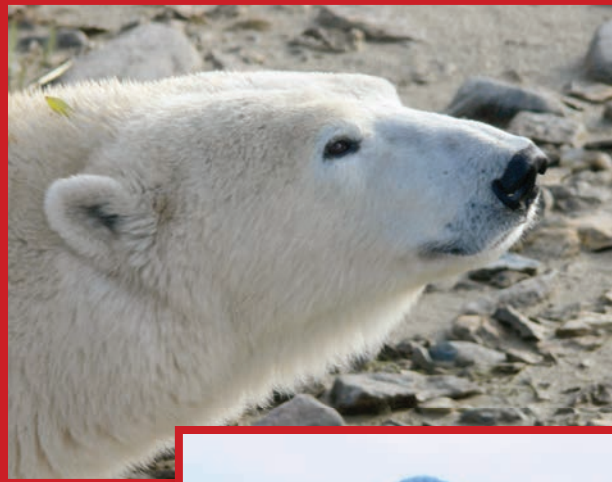


Photo provided by Kara DeLanty

(Above)  
The first polar bear sighted by Kara DeLanty.

(Right)  
Kara DeLanty



Photo provided by Kara DeLanty

DeLanty speaks with authority. She's visited polar bear habitat near Churchill in Manitoba, Canada, through Polar Bears International (PBI). "The organization teaches you how to educate others on climate change and how it affects polar bears and other animals." Last October DeLanty returned from a second PBI trip to Churchill after working as an In-Field Ambassador. "I educated eco-tourists about polar bears and climate change."

She says encountering polar bears is different from seeing bears in the lower 48, where vegetation provides cover. "Near Churchill it's flat tundra, and then you see this massive bear walking in from the middle of nowhere—it's almost mystical." Inspired, she and PBI colleagues created a program in 2009 called Acres for the Atmosphere. "It's an international program and we implemented it at the Zoo in 2010 at the Party for the Planet event," she says. "We handed out 3,000 tree seedlings and encouraged people to plant them."

The program has grown. Now guests at Party for the Planet can receive tree saplings to plant on the Zoo grounds near the aviary and other locations. "There have been about 1,500 trees planted so far," she says. In addition to planting trees, DeLanty says there are other ways to help offset global warming. "People can reduce their carbon footprint. Turn off lights. Drive less. Basically, do what you can to conserve energy."

By Zak Mazur



# 3 Decades of Support

What motivates people to support the Zoological Society for not just years but for decades? Tigers. Whooping cranes. Giraffes. For Jack and Patti McKeithan, the love of these animals has made them permanent supporters of the Zoological Society of Milwaukee (ZSM) and the Milwaukee County Zoo. Jack chaired the second capital campaign to improve the Zoo, raising more than \$30 million in a public-private partnership that changed the face of about 25 percent of the Zoo. Patti expanded the relationship between the ZSM and the former Miller Brewing Company (now MillerCoors), where she was vice president of corporate affairs until retirement. That company ended up giving a major donation to remodel the Zoo's giraffe exhibit, creating indoor and outdoor spaces where the public could get closer to the giraffes. Jack serves on the ZSM Board and has for about 30 years; he was chairman in 1997-1999. He and Patti have been members of the Platypus Circle, the ZSM's premier donor group, for decades.

Jack got involved with the Zoo in the early 1980s by providing funds to create an individual space for Troika the tiger, allowing her to stay at the Zoo. She needed to be separated from the other tigers for her safety. "I love—with a craziness, I suppose—tigers," he says. Patti is passionate about endangered cranes. She is very involved with the International Crane Foundation in Baraboo, Wis. The Zoo has taken in two of the foundation's injured whooping cranes that cannot fly.



*Jack and Patti McKeithan stand in front of the Zoo's new U.S. Bank Gathering Place in 2008.*



*Celebrating the success in 2006 of a capital campaign to improve the Zoo are (from left) Jack McKeithan, then-Milwaukee County Executive Scott Walker, Zoo director Chuck Wikenhauser, ZSM president emeritus Gil Boese and ZSM CEO Robert Davis.*

Jack's influence as chairman and CEO of Tamarack Petroleum Company, Inc., helped him bring in donors to the 2001 through 2008 capital campaign. But he says he's pleased that ZSM Board members, especially Chair Bonnie Joseph, Karen Peck Katz and Judy Holz Stathas, "really pitched in, not only with financial support but also with efforts to get other contributors." Milwaukee County provided \$14.8 million, and the ZSM raised the rest. "ZSM President Gil Boese had the vision and strategies necessary to mesh the county commitment with private sector support. I'm proud that we met our goal to complete nine projects in eight years," he says.

Not only did Jack receive the ZSM's highest award, the Emu Egg, in 1998, but he and Patti also have been honored several times by the ZSM. Jack is also a longtime board member on both Junior Achievement, which gave him the Distinguished Executive Award in 2013, and the Boys and Girls Clubs of Greater Milwaukee. Patti is a former trustee for and remains involved with her alma mater, St. Norbert College. This year the couple received the Warren P. Knowles Humanitarian Award from the Medical College of Wisconsin, where Jack is on the cardiovascular advisory board and Patti is a member of the Women in Science Series.

# a BUNNY'S BANQUET

## Breakfast and Lunch with the Bunny

Sponsored by Racine Danish Kringles

**April 12 & 13, Milwaukee County Zoo.**

\$15 per child or adult; \$6 for children 2 & under.

Milwaukee County parking fee: \$12.

Registration required. Register online at **milwaukeezoo.org** starting March 10.

There are plenty of bunnies at the Milwaukee County Zoo, but only one you can dine with. The Easter Bunny or Mrs. Easter Bunny will be back for breakfast, and lunch. This pre-holiday celebration includes Zoo admission, live music, a gift for each child, and, of course, a hearty meal plus sweet kringle. Breakfast is served at 9 a.m. on Saturday only, but lunch is served at noon on either day. After your meal in the Peck Welcome Center, head to the apes and primates exhibits, which you can reach through indoor corridors. Gorillas, bonobos, spider monkeys and orangutans are fun to watch.



*Hope N., 10 months old, of Dousman, celebrates her first Easter at last year's event.*

## ZUMBA® PARTY AT THE ZOO REGISTRATION FORM

Feb. 22, 2014

Name \_\_\_\_\_

Address \_\_\_\_\_

City, State, ZIP \_\_\_\_\_

Phone: Day (\_\_\_\_\_) \_\_\_\_\_ Phone: Eve (\_\_\_\_\_) \_\_\_\_\_

E-mail address \_\_\_\_\_

Number of participants \_\_\_\_\_ at \$15\* each = \_\_\_\_\_

Names of participants \_\_\_\_\_

I am unable to attend, but here is my tax-deductible contribution to help support all of the Zoo's animals \$ \_\_\_\_\_

Online registration: **zoosociety.org/Zumba** (online registration ends Feb. 20)

**Credit Card:** Please charge my:  Visa  MasterCard

Acct. No. \_\_\_\_\_

Exp. Date \_\_\_\_\_ Security Code \_\_\_\_\_ (last 3 digits in signature area on back of credit card)

Signature \_\_\_\_\_ Print Name \_\_\_\_\_

as it appears on credit card

**Check:** Make payable to **ZOOLOGICAL SOCIETY** and mail this order form with payment to:  
**ZUMBA® PARTY AT THE ZOO**, Zoological Society, 10005 W. Bluemound Rd.,  
Milwaukee, WI 53226-4383

\*Your fee, less \$3, is tax-deductible. Fees include 5.6% WI sales tax. To comply with WI Statute Section 440.455, a financial statement of the Zoological Society will be provided upon request.



# Zoo Farm to Zoo Table

It's a warm summer morning. Sparkling dew covers tomatoes, cucumbers, zucchini, acorn squash, basil and a host of other herbs. Soon, the ripest vegetables and herbs are harvested. Within hours, visitors to the Milwaukee County Zoo eat this produce. If you ate at the Farmer's Market food stand in the Northwestern Mutual Family Farm last summer, or had a meal at the Flamingo Café cafeteria, you enjoyed some of this produce. The idea to use farm-to-table food sourcing at the Zoo was the brainchild of Andrew Stockel, the Zoo's concessions and merchandise coordinator. Last summer was the trial run. "I wanted to use natural ingredients so families could feel comfortable knowing they're eating a wholesome product," he says. How wholesome? "All the crops are pesticide-free." Stockel knows this because they were grown at the Zoo by Ann Hackbarth—one of the Zoo's horticulturists—near the picnic area by the Australia Building. "It's fresh and all natural," she says. "We pick it early in the morning and it's sent to food concessions, where it's washed and prepped—farm to table by noon."



*Andrew Stockel shows off fresh produce.*

The Zoo-grown food will be planted again next spring. "It saves a considerable amount of money," says Stockel. For example, he says that Zoo-grown basil is on average 10 times cheaper than store-bought basil. And it's not just families who benefit. Some of the Zoo's animals do, too. "One of the primate zookeepers said that the apes used to play with the purchased zucchinis, but with ours they eat them," says Hackbarth. "We grow small tomatoes and they eat them like popcorn." Apes also enjoy large amounts of fresh-grown herbs, which are grown all summer. Ape zookeeper Claire Richard says the gorillas consume so much basil that they even smell like it. "It's a nice break from a gorilla's usual strong odor," she says.

*By Zak Mazur*



*Horticulturist Ann Hackbarth grows flowers as well as vegetables at the Zoo.*

## VOLUNTEERING: JOIN ZOO PRIDE

Zoo Pride is the Zoological Society's volunteer auxiliary. Get started in Zoo Pride with two-session Level I training. Volunteers who complete Level I can then choose to attend Level II, which consists of four sessions and allows more opportunities for volunteering. Level I sessions run March 12 at 9 a.m. or 6:30 p.m. AND March 15 at 8:30 a.m. Level II (on four days) runs: March 19 at 9 a.m. or 6:30 p.m. AND March 22 at 8:30 a.m., March 26 at 9 a.m. or 6:30 p.m. AND March 29 at 9 a.m. There's also training in May and June. Level I: May 28 at 9 a.m. or 6:30 p.m. AND May 31 at 8:30 a.m. Level II sessions (on four days) run: June 4 at 9 a.m. or 6:30 p.m. AND June 7 at 8:30 a.m., June 11 at 9 a.m. or 6:30 p.m. AND June 14 at 9 a.m.

# HELPING HANDS

Want to give us a helping hand? Whether you're excited about our events, education programs or conservation efforts, you can help! Details on the Web: [zoosociety.org/Support](http://zoosociety.org/Support).

Photos by Richard Taylor



(Above) Gail and Brian Betzhold, of Grafton, sample beers.

(Right) Zach Silva, of the Milwaukee Brewing Company, tapped the ceremonial firkin to kick off Zoo Brew.



## The Purr-fect Pour

There's nothing quite like sipping a cold brew among big cats. The Zoological Society of Milwaukee's (ZSM's) annual Zoo Brew paired both on Oct. 24. Animal and beer lovers alike could sample frothy favorites and the latest lagers from more than 25 breweries. More than 650 guests attended the fundraising event at the Milwaukee County Zoo, which raised \$33,727 for the ZSM. Guests could also enjoy samplings from more than 20 restaurants that offered everything from cake and BBQ to seafood and ice cream. Several food trucks gave those who wanted to dine *al fresco* a meal they could eat next to fire pits near the Zoo's Humboldt penguins. Guests were shuttled to and from the Peck Welcome Center and the Florence Mila Borchert Big Cat Country to sample all the stouts. Sampling mugs were sponsored by MillerCoors.

Photo by Mary Michare



## Free Fun for the Family

Families could beat the cold-weather blues on six 2013 Family Free Days at the Milwaukee County Zoo. Zoogoers enjoyed the free-admission Saturdays courtesy of **North Shore Bank** and **FOX 6**. On the Dec. 7 Family Free Day, visitors saw cold-weather Zoo animals like elk, Japanese macaques and snow leopards in their element. Indoors, zoogoers could catch bonobos climbing in their exhibit and fennec foxes snuggling close together. Visitors could also visit the Zoo's giraffes, including the two latest additions to the herd, Ziggy and Marlee. Free Saturdays in 2014 are on Jan. 4, Feb. 1, March 1, April 5, Nov. 1, and Dec. 6. The \$12 Milwaukee County parking fee applies.

Owen S., 3, of South Milwaukee, pets a snow leopard pelt at last year's event.





Photos by Richard Taylor

(Above) Noah M., 1, of Brookfield, was the Beast to Mom Catherine Margaret's beauty at Halloween Spooktacular.

(Right) Carter R., 2, of Oconomowoc, poses in the pumpkin patch at Halloween Spooktacular.



## Pumpkins, Pirates and a Parade

Costumed skeletons and tiny superheroes roamed the Milwaukee County Zoo during two weekends of Halloween-themed events, sponsored by **Sendik's Food Markets**. Boo at the Zoo offered eerie activities at the Zoo. Brave souls could take a haunted train ride, check out a dancing light show in Wolf Woods and catch a pirate performance in the Zoo's entrance atrium. More than 8,630 visitors came to the Oct. 18 and 19 event. Halloween Spooktacular, on Oct. 25 and 26, offered some of the same activities as Boo at the Zoo but added trick-or-treating and a Saturday parade. The event drew 14,260 visitors. On Saturday, Oct. 26, kids could view pumpkin carving or watch animals like African elephants Brittany and Ruth dig into their own pumpkin treats. A 650-pound pumpkin was featured in the farm while a costume parade had zoogoers marching in costumes ranging from lions to lambs. Both events ran until 9 p.m., offering nighttime visits to the Zoo.



Ellery G., 4, of Brookfield, enjoys kringle at a holiday breakfast at the Zoo.

## A Festive Feast & Forest

With his elves busy making toys, Santa took a break to meet kids at the Milwaukee County Zoo during Breakfast and Lunch with Santa. The three-weekend event, held Dec. 7-8, 14-15 and 21-22, was sponsored by **Racine Danish Kringles**. Lunch was served on Saturdays and Sundays, while breakfast was available only on Saturdays. Guests could enjoy kringle with their meals, sing along to favorite holiday tunes, and get their photo taken with Santa and Mrs. Claus. Each child went home with a special plush-toy gift. After the meal, participants could explore the Zoological Society of Milwaukee's Fantastic Forest, donated by **Hawks Landscape**. Trees were trimmed with hand-crafted ornaments by Milwaukee-area youth groups and gave a holiday glow to the Zoo's entrance atrium, where the 63 trees were located.

Photo by Richard Brodzeller

# insider tips

## The Original Blood Donors

They care for the sick. They feed orphaned babies. They have the potential to save human lives. They are vampire bats, and these nocturnal creatures are sorely misunderstood. "Vampire bats are altruistic," says Rhonda Crenshaw, area supervisor for the Small Mammals Building at the Milwaukee County Zoo. Last summer she witnessed two such instances. The first involved an orphaned baby vampire bat. "He was alone, hanging from his feet," she says. "Normally a baby suckles for about three months, clinging to mom even during flight." Immediately other female bats in the colony began caring for the orphan. But none of them was lactating, and the infant wasn't getting milk. Crenshaw thinks the adults, which drink blood, regurgitated some of it into the orphan's mouth to feed it. "The baby was looking strong, but not growing, possibly due to lack of milk," she says. One day the baby fell to the ground and injured its shoulder and elbow. "Some of the females went to the ground and carried him to the ceiling." They continued feeding and grooming the orphan, but he became dehydrated. Crenshaw supplemented his diet with vampire bat formula and blood, administered from a syringe. "Vampire bats do not suck blood," she says, "They lap it up." The blood comes from a slaughterhouse. A special container is placed on the floor of the exhibit and the bats walk to it, just as they'd approach a meal (usually a cow or horse) in the wild. As of mid-December (when we went to press) the young bat appeared to be healthy, albeit small for his age.



*A group of vampire bats at the Milwaukee County Zoo.*

In the other instance, Crenshaw watched in amazement as two bats carefully hauled a weak bat to the ceiling, where the rest of the group usually hangs. "They cradled it in their wings. Then they crawled backward up the wall." In her 15 years at the Zoo, Crenshaw has never seen anything like it. If altruism doesn't make you look favorably upon vampire bats, maybe this will: Their saliva has promising medical applications for stroke victims, notes Crenshaw. It contains a powerful anticoagulant that can break down blood clots, allowing blood to reach the brain. Medical trials are promising. And there's one more lovable feature of vampire bats, she says. "They have really cute little faces. Well, maybe it's a face only a zookeeper could love."

*By Zak Mazur*



*A sugar glider at the Milwaukee County Zoo.*

## What Does it Take to be Social?

It's easy to tell when an animal is accustomed to people. For example, instead of fleeing, it might jump onto your head and make itself comfortable. That's what one of the Milwaukee County Zoo's two new sugar gliders, which weigh only about 6 ounces each, did to Rhonda Crenshaw when she was checking on them last October. "They weren't afraid of people," says Crenshaw, area supervisor for the Small Mammals Building. That's probably because of careful handling at their previous home, the Dickerson Park Zoo in Springfield, Mo. Sugar gliders



## Rescued Pup Comes to Zoo

Any new parent knows that babies require round-the-clock feeding. The same care goes into raising California sea lion pups—especially one that was found stranded on the beach at 3 months old. Nalu, now 7 months, was found on the Pacific coast in Santa Barbara, Calif., dehydrated and malnourished after being separated from his mom. The rescued pup could not be released back into the wild, decided the National Oceanic and Atmospheric Administration's National Marine Fisheries (NOAA Fisheries). That's because sea lion pups rely on their mother's milk until they are 6 to 12 months old and Nalu would have to be hand-fed, and would thus bond with humans.



*A sea lion pup at the Zoo.*

So how did Nalu, which means “ocean wave” in Hawaiian, end up at the Milwaukee County Zoo? “NOAA Fisheries contacted us and said they needed a home for a baby,” says Shelley Ballmann, president of Oceans of Fun, which runs the Seal & Sea Lion Show at the Zoo. Centers in California that normally take in sea lions are overwhelmed with the high number of stranded pups that need lots of care.

“We jumped on it,” says Ballmann. Nalu arrived Nov. 7, flying in with Oceans of Fun staff via a FedEx® plane. Here, he is receiving 24-hour care, with bottle feedings every four hours. Nalu's circumstances make him an excellent ambassador for his species and the importance of conservation. This year, there are more stranded pups than ever, causing NOAA Fisheries to declare an Unusual Mortality Event. Investigators believe this may be due to a lack of fish such as sardines and anchovies that are essential to a sea lion's diet. Without these fish mothers cannot sufficiently nurse their young, causing many to abandon their babies. Human activities like overfishing can contribute to this, but without Oceans of Fun and other stranding centers, pups like Nalu would not survive. “Habitat destruction typically correlates directly with food depletion, which can shorten their lifespans,” says Ballmann, adding that “unfortunately life in the wild isn't always so wonderful.”

*By Dana Christen*

got their name because they can glide up to 50 yards in the forests of their native habitats in Australia, Papua New Guinea, Indonesia and surrounding islands. This skill that looks like flying is thanks to a thin, furred membrane called a patagium, which stretches from the wrist to the ankle. The “sugar” probably refers to their fondness for sweet sap, blossoms, and nectar.

The two newcomers, Bilhma and Ngaba—both born on Jan. 1, 2004—came to our Zoo to be company for our resident sugar glider, Rose, who was born here in 2006. Because sugar gliders are nocturnal marsupials, Rose lives on the night side of the Small Mammals Building. When the newcomers were placed in her exhibit, however, Rose became aggressive and chased them away. Since sugar gliders are very social animals that bond for life, why would Rose want to be alone? “Sugar gliders scent-mark their territory,” says Crenshaw. “When another animal is detected that doesn't have the group scent—or in Rose's case, her individual scent—they expel the outsider.” So the key to getting Rose to accept Bilhma and Ngaba was to rid the exhibit of Rose's scent. “We had to change all the old objects in the exhibit to get rid of her scent and switch them with new items,” says Crenshaw. Once that was done, Rose allowed Bilhma and Ngaba to roam the exhibit and eat at their leisure. “She would curl up and sleep with them every night,” says Crenshaw, adding, “Rose seems happier now. When they sleep together, it's really cute—it's like a little furry mass of sugar gliders.”

*By Zak Mazur*

# Go-Go to Galena

## Early Spring Trip to Historic Galena, Ill.

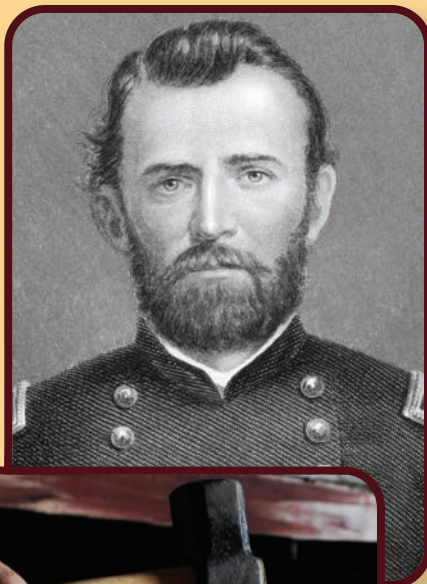
Saturday, April 12, 2014, 6:30 a.m.-8 p.m.

Cost: \$50 per person.

Register online, [zoosociety.org/Galena](http://zoosociety.org/Galena), or call (414) 258-2333 or send in form below.

With specialty shops, galleries, boutiques and more, downtown Galena, Ill., is a shoppers and history lovers paradise. Travel with the Zoological Society of Milwaukee to this historic city on the mighty Mississippi. Check out distinctive specialty stores, antique shops and art galleries. If you love antiquing, this is the place for you! History buffs will enjoy visiting the Dowling House, The Old Blacksmith Shop, the Old Market House State Historic Site and the Ulysses S. Grant Home State Historic Site. Another historical site to visit is Elihu Washburne's home. He was a popular congressman and friend of both Presidents Lincoln and Grant. And remember to dine at one of Galena's many fine restaurants!

Registration starts at 6:30 a.m. at the Milwaukee County Zoo with a continental breakfast in the Flamingo Café (located in the U.S. Bank Gathering Place). Buses leave at 7:30 a.m. from the Zoo and return at 8 p.m. Your tour includes transportation on restroom-equipped motor coaches, beverages donated by PepsiAmericas®, and a snack on the return trip. (Note to those with allergies: Snacks may include dairy and peanut byproducts.) This excursion is open only to Zoological Society members and their guests. An itinerary will be mailed prior to the trip. Call (414) 258-2333 for questions. Space is limited.



stock photos

(Top) Ulysses S. Grant. (Below) A blacksmith in action.

## EARLY SPRING TRIP TO HISTORIC GALENA, ILL.

Name(s) of Traveler(s) \_\_\_\_\_

Zoological Society Membership No. \_\_\_\_\_

Address \_\_\_\_\_

City, State, ZIP \_\_\_\_\_

Phone: Day (\_\_\_\_\_) \_\_\_\_\_ Phone: Eve (\_\_\_\_\_) \_\_\_\_\_

If you wish to travel with another person or group who is sending in a separate reservation, please indicate the name(s) \_\_\_\_\_

Special traveling needs \_\_\_\_\_

Total amount enclosed \$ \_\_\_\_\_ (Trip cost is not tax-deductible.)

**Credit Card:** Please charge my:  Visa  MasterCard

Acct. No. \_\_\_\_\_

Exp. Date \_\_\_\_\_ Security Code \_\_\_\_\_ (Last 3 digits in signature area on back of credit card)

Signature \_\_\_\_\_ Print Name \_\_\_\_\_

as it appears on credit card

**Check:** Make payable to **ZOOLOGICAL SOCIETY** and mail this order form with payment to:  
**GALENA TRIP**, Zoological Society, 10005 W. Bluemound Rd., Milwaukee, WI 53226-4383

Space is limited. **Cancellations prior to March 24, 2014, are refundable, less a \$10 per person cancellation fee.** Cancellations after March 24, 2014, are not refundable. Call (414) 258-2333 for more information. Trip cost is not tax-deductible. To comply with WI Statute Section 440.455, a financial statement of the Zoological Society will be provided upon request.



# A Gift Anyone Can Make

Many of us donate to charities, organizations and causes we're passionate about. But few of us consider ourselves philanthropists. Philanthropy is often considered the purview of Bill and Melinda Gates or Warren Buffet, those who can afford donations without affecting their standard of living. But charitable giving doesn't have to harm your ability to provide for your family or prepare for retirement. As a financial advisor, I remind my clients that charitable giving can balance the need to provide for your family with making contributions to cherished organizations, like the Zoological Society of Milwaukee.

As an estate-planning tool, charitable giving can be used to manage taxes, shift assets, and transfer wealth. For most situations, there's a savvy strategy to match. Some common examples are listed below.



- "I like the security of keeping my assets now, but I think I will have some funds available to give to an organization when I'm gone." In this case, leaving money and/or assets to heirs and selected non-profit organizations in your will makes good sense.
- "I have extra funds available now, but I might need them later." A Charitable Lead Trust lends securities to charitable organizations and then transfers the investment back to you later.
- "I have many assets now, but I don't have a sum of cash to currently make a charitable contribution." A Charitable Remainder Trust gives you an opportunity to make a charitable contribution now from your asset(s) while also allowing you a stream of income.

One of the big advantages of a Charitable Trust is avoiding capital gains taxes by gifting stocks or mutual funds that have a very low cost (tax basis). Capital gains taxes are avoided when you transfer appreciated assets to a charity through this means. This also allows donors to maximize charitable giving while minimizing tax implications on these appreciated assets.

Giving to your favorite causes can complement your overall estate planning and can make a meaningful difference to organizations and institutions that are important to you and your family. These are important topics to discuss with your financial advisor or estate-planning attorney.

*By Mike Arnow, a CPA, CFP® and fee-only financial advisor with SJA Financial Advisory. He is also a member of the ZSM Simba Circle steering committee.*

## Planned Giving—Simba Circle

The Simba Circle was formed by the Zoological Society of Milwaukee to recognize and thank those special people who have remembered the Society with a planned or deferred gift. When you make this type of gift, you create a legacy of support that will ensure that the Zoological Society can continue to carry out its mission to support the Milwaukee County Zoo, educate the public and conserve wildlife for generations to come.

By informing us that you've named the Zoological Society of Milwaukee County as a beneficiary of your will or other legacy gift, you will become part of the Simba Circle. As a member, you will receive recognition on signage at the Zoo and in Society publications, invitations to VIP premieres and the Annual Simba Circle Dinner as well as a Simba Circle lapel pin. We don't want to miss you! If you've already included the Zoological Society of Milwaukee County in your giving plans, please let us know! If you'd like additional information, please call the Development office at (414) 258-2333, ext. 310, or e-mail [simba@zoosociety.org](mailto:simba@zoosociety.org).

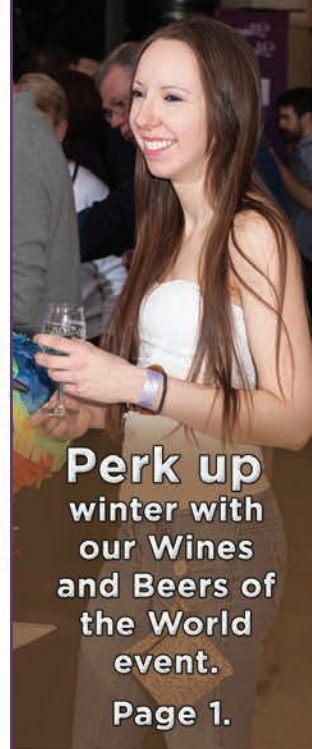




Zoological Society of Milwaukee County  
 10005 W. Bluemound Rd.  
 Milwaukee, WI 53226-4383  
 (414) 258-2333

ADDRESS SERVICE REQUESTED

**DATED MATERIAL**  
 Please Deliver Promptly



**Perk up  
 winter with  
 our Wines  
 and Beers of  
 the World  
 event.**  
 Page 1.

## What's happening

Details Inside

### Jan. 4, Feb. 1, March 1, and April 5

Family Free Day at the Zoo, sponsored by North Shore Bank, 9:30 a.m.-4:30 p.m.\*

### Jan. 19

Samson Stomp & Romp, sponsored by Amica Insurance, at the Milwaukee County Zoo. Pre-register at (414) 256-5466.

### Jan. 23

Puttin' on the Ritz fundraiser, sponsored by Whyte Hirschboeck Dudek S.C., at Potawatomi Bingo Casino. Pre-register at (414) 258-2333.

### Feb. 2

Groundhog Day; 10:30 a.m. ceremony at the Zoo.\*

### Feb. 5

Online registration starts for Zoological Society of Milwaukee (ZSM) Summer Camps, sponsored by Penzeys Spices.

### Feb. 6

The ZSM's Wines and Beers of the World.\*\*

### Feb. 7-May 18

ZSM Education classes for children ages 2-14.

### Feb. 15

ZSM members' trip to Chicago's Museum of Science and Industry, including the Disney exhibit.\*\*

### Feb. 22

Zumba® Party at the Zoo.\*\*

### March 8 & 9

Behind the Scenes Weekend at the Zoo.\*

### March 12, 15, 19, 22, 26 & 29

Zoo Pride volunteer training. Call (414) 258-5667.\*\*

### March 22

Kids Conservation Club workshop for club members only.\*\*

### April 12

ZSM members' field trip to Galena, Ill.\*\*

### April 12 & 13

Breakfast & Lunch with the Bunny, sponsored by Racine Danish Kringsles.\*\*

### April 19

Egg Day at the Zoo, 9 a.m.-4 p.m.\*\*+

### April 25

Zootastic at the Zoo, 5-9 p.m.\*\*+

### May 11

Mother's Day at the Zoo, sponsored by Lifeway Foods.\*+

### May 17 & 18

Party for the Planet at the Zoo, sponsored by American Transmission Company.\*\*

### May 19

Snooze at the Zoo online registration for ZSM members begins. See [zoosociety.org](http://zoosociety.org).+

### May 24

Zoo's summer season begins and its special summer exhibit, Sting Ray & Shark Bay, opens.

### May 24

Kohl's Wild Theater performances return to the Zoo.+

### May 28, 31, June 4, 7, 11 & 14

Zoo Pride volunteer training. Call (414) 258-5667.\*\*

\*Zoological Society members get free Zoo admission with their Zoo Pass. Those with Zoo Pass Plus also get free parking for one car per membership per day.

\*\*Pre-register for this event.

+More details in the April-May issue of *Wild Things*

**“Like”**  
 us at  
[Facebook.com/ZooPass](https://www.facebook.com/ZooPass)  
 for great photos,  
 animal news  
 & fun!